

# Diphenyleneiodonium chloride

## NADPH oxidase inhibitor

Binds strongly to flavoproteins and is thus a powerful and specific inhibitor of several important enzymes, including nitric oxide synthase (NOS), NADPH-ubiquinone oxidoreductase, NADPH oxidases and NADPH cytochrome P450 oxidoreductase. Nitric oxide synthase, which shows significant homology with cytochrome P450 reductase, has been shown to be irreversibly inhibited by this compound in cultured peritoneal macrophages ( $IC_{50}=30nM$ ).

Citations: 24

[View Online »](#)

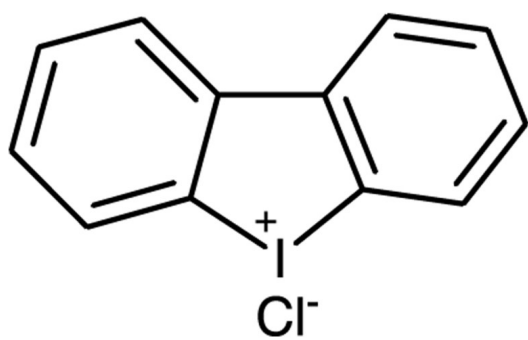
## Ordering Information

[Order Online »](#)

BML-CN240-0010	10mg
----------------	------

## Manuals, SDS & CofA

[View Online »](#)



## Handling & Storage

Use/Stability	As indicated on product label or CoA when stored as recommended.
Handling	Protect from light.
Long Term Storage	-20°C
Shipping	Ambient Temperature

## Regulatory Status

RUO - Research Use Only

## Product Details

Alternative Name	DPI chloride, Dibenziodolium chloride
Appearance	White to off-white solid.
CAS	4673-26-1
Couple Target	Cytochrome P450 reductase, NOS
Couple Type	Inhibitor
Formula	$C_{12}H_8I \cdot Cl$
Identity	Determined by <sup>1</sup> H-NMR and MS.
MW	314.5
Purity	≥98% (HPLC)
Solubility	Soluble in DMSO (warm) (5mg/ml).



ENZO LIFE SCIENCES,  
INC.  
Phone: 800.942.0430  
[info-  
usa@enzolifesciences.com](mailto:info-usa@enzolifesciences.com)

European Sales Office  
ENZO LIFE SCIENCES  
(ELS) AG  
Phone: +41 61 926 8989  
[info-  
eu@enzolifesciences.com](mailto:info-eu@enzolifesciences.com)

Belgium, The Netherlands  
& Luxembourg  
Phone: +32 3 466 0420  
[info-  
fr@enzolifesciences.com](mailto:info-fr@enzolifesciences.com)

France  
Phone: +33 472 440 655  
[info-  
fr@enzolifesciences.com](mailto:info-fr@enzolifesciences.com)

Germany  
Phone: +49 7621 5500 526  
[info-  
de@enzolifesciences.com](mailto:info-de@enzolifesciences.com)

UK & Ireland  
Phone (UK customers):  
0845 601 1488  
Phone: +44 1392 825900  
[info-  
uk@enzolifesciences.com](mailto:info-uk@enzolifesciences.com)