

dBET1

PROTAC targeting on BRD4

dBET1 is a PROTAC, consisting of a BRD4-ligand JQ-1 linked to a cereblon E3 ligase ligand, targeting on BET bromodomain BRD4.

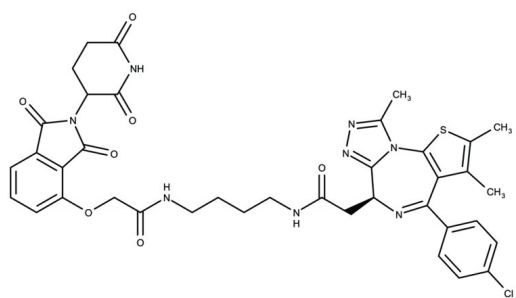
Ordering Information

[Order Online »](#)

ENZ-CHM260-0005	5mg
ENZ-CHM260-0025	25mg

Manuals, SDS & CofA

[View Online »](#)



Handling & Storage

Use/Stability	As indicated on product label or CoA when stored as recommended.
Long Term Storage	-20°C
Shipping	Blue Ice

Regulatory Status

RUO - Research Use Only

Product Details

Appearance	White to pale yellow solid.
CAS	1799711-21-9
Couple Target	BET bromodomain protein, Ligase [E3]
Couple Type	Inhibitor, Ligand
Formula	$C_{38}H_{37}ClN_8O_7S$
MW	785.3
Purity	≥99%

Last modified: April 24, 2025



ENZO LIFE SCIENCES,
INC.
Phone: 800.942.0430
[info-
usa@enzolifesciences.com](mailto:info-usa@enzolifesciences.com)

European Sales Office
ENZO LIFE SCIENCES
(ELS) AG
Phone: +41 61 926 8989
[info-
eu@enzolifesciences.com](mailto:info-eu@enzolifesciences.com)

Belgium, The Netherlands
& Luxembourg
Phone: +32 3 466 0420
[info-
be@enzolifesciences.com](mailto:info-be@enzolifesciences.com)

France
Phone: +33 472 440 655
[info-
fr@enzolifesciences.com](mailto:info-fr@enzolifesciences.com)

Germany
Phone: +49 7621 5500 526
[info-
de@enzolifesciences.com](mailto:info-de@enzolifesciences.com)

UK & Ireland
Phone (UK customers):
0845 601 1488
Phone: +44 1392 825900
[info-
uk@enzolifesciences.com](mailto:info-uk@enzolifesciences.com)