

D609

Phospholipase inhibitor

Selective inhibitor of phosphatidylcholine-specific phospholipase C (PC-PLC). Has been used to study the coupling of phosphatidylcholine-specific phospholipase C with sphingomyelinase. Shows antitumor and antiviral activity. Inhibits basement membrane collagen synthesis, which is the last step in the development of a new blood vessel. Inhibits induction of nitric oxide synthases (NOS). Induces apoptosis. It indirectly inhibits phorbol ester stimulated PLD activity.

Citations: 26

[View Online »](#)

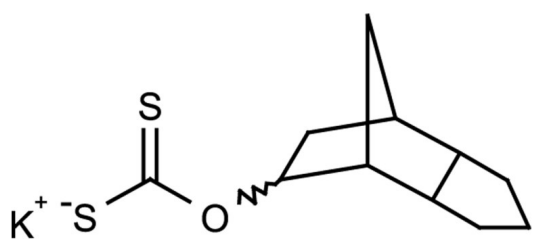
Ordering Information

[Order Online »](#)

BML-ST330-0005	5mg
BML-ST330-0025	25mg

Manuals, SDS & CofA

[View Online »](#)



Handling & Storage

Use/Stability	As indicated on product label or CoA when stored as recommended. Stable for at least 1 year after receipt when stored, as supplied, at -20°C. We recommend to prepare fresh solutions each day.
Long Term Storage	-20°C
Shipping	Ambient Temperature

Regulatory Status

RUO - Research Use Only

Product Details

Alternative Name	Tricyclodecan-9-yl xanthogenate . K
Appearance	Off-white solid.
CAS	83373-60-8
Couple Target	Phospholipase, PLC
Couple Type	Inhibitor
Formula	$C_{11}H_{15}OS_2 \cdot K$
MW	266.5
Purity	≥98% (TLC)
Solubility	Soluble in water (25mg/ml).

Last modified: May 29, 2024



ENZO LIFE SCIENCES,
INC.
Phone: 800.942.0430
[info-
usa@enzolifesciences.com](mailto:info-usa@enzolifesciences.com)

European Sales Office
ENZO LIFE SCIENCES
(ELS) AG
Phone: +41 61 926 8989
[info-
eu@enzolifesciences.com](mailto:info-eu@enzolifesciences.com)

Belgium, The Netherlands
& Luxembourg
Phone: +32 3 466 0420
[info-
fr@enzolifesciences.com](mailto:info-fr@enzolifesciences.com)

France
Phone: +33 472 440 655
[info-
fr@enzolifesciences.com](mailto:info-fr@enzolifesciences.com)

Germany
Phone: +49 7621 5500 526
[info-
de@enzolifesciences.com](mailto:info-de@enzolifesciences.com)

UK & Ireland
Phone (UK customers):
0845 601 1488
Phone: +44 1392 825900
[info-
uk@enzolifesciences.com](mailto:info-uk@enzolifesciences.com)