

Cytokeratin 8 (human) monoclonal antibody (35βH11)

This antibody is covered by our [Worry-Free Guarantee](#).

Citations: 2

[View Online »](#)

Ordering Information

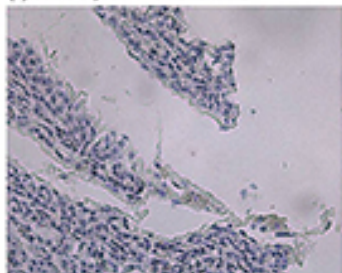
[Order Online »](#)

ENZ-C34902	~10 µg - 0.5ml
------------	----------------

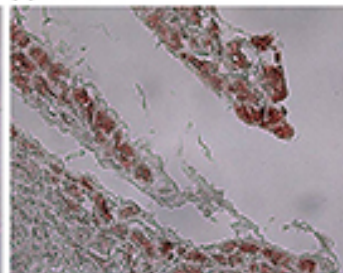
Manuals, SDS & CofA

[View Online »](#)

(-) control, 1X Dilution Buffer



(+) ENZ-C34902



Immunohistochemistry analysis of human pancreas tissue using Cytokeratin 8 (human), mAb (35 β H11) at a dilution of 1:20.

Handling & Storage

Handling	Avoid freeze/thaw cycles. After opening, prepare aliquots and store at -20°C.
Short Term Storage	+4°C
Long Term Storage	-20°C
Shipping	Blue Ice

Regulatory Status

RUO - Research Use Only

Product Details

Alternative Name	CK8
Application	IHC (PS), WB
Clone	35βH11
Formulation	Liquid. In PBS containing 0.1% sodium azide and 1% BSA.
Host	Mouse
Immunogen	Triton/High salt-insoluble material from the human hepatocellular carcinoma cell line Hep3B.
Isotype	IgM
Purity Detail	Affinity purified.
Recommendation Dilutions/Conditions	Immunohistochemistry (paraffin sections; for optimal results, fixation in alcohol-based fixatives, such as methacarn, is recommended. Pretreatment with proteolytic enzymes such as trypsin may be required when formalin-fixed sections are to be stained. Choose a good quality enzyme-linked anti-mouse IgM antibody for detection).General suggested starting dilution is 1:20-1:50.Suggested dilutions/conditions may not be available for all applications. Optimal conditions must be determined individually for each application.
Source	Purified from hybridoma tissue culture supernatant.

Species Reactivity

Human

Specificity

35βH11 is specific for “low molecular weight” cytokeratin 8 (52.5 kDa) characteristically found in “simple” epithelium (e.g., hepatocytes, pancreatic acinar cells, absorptive cells of the GI tract, etc.), ductal structures (e.g., of liver and breast), but not in squamous epithelium. The antibody stains carcinomas such as ductal carcinoma of the breast, liver and pancreas, adenocarcinoma (ovary, lung, endometrium) but does not react with squamous cell carcinoma, sarcoma, melanoma or lymphoma. When used in conjunction with MAb to Cytokeratin 1/5/10/14 (human) (34βE12) (Prod. No. ENZ-C34903), the majority of epithelium and epithelial tumors are labeled.

UniProt ID

P05787

Worry-free Guarantee

This antibody is covered by our [Worry-Free Guarantee](#)

Last modified: May 29, 2024



ENZO LIFE SCIENCES,
INC.
Phone: 800.942.0430
[info-
usa@enzolifesciences.com](mailto:info-usa@enzolifesciences.com)

European Sales Office
ENZO LIFE SCIENCES
(ELS) AG
Phone: +41 61 926 8989
[info-
eu@enzolifesciences.com](mailto:info-eu@enzolifesciences.com)

Belgium, The Netherlands
& Luxembourg
Phone: +32 3 466 0420
[info-
be@enzolifesciences.com](mailto:info-be@enzolifesciences.com)

France
Phone: +33 472 440 655
[info-
fr@enzolifesciences.com](mailto:info-fr@enzolifesciences.com)

Germany
Phone: +49 7621 5500 526
[info-
de@enzolifesciences.com](mailto:info-de@enzolifesciences.com)

UK & Ireland
Phone (UK customers):
0845 601 1488
Phone: +44 1392 825900
[info-
uk@enzolifesciences.com](mailto:info-uk@enzolifesciences.com)