

Cytokeratin 1/5/10/14 (human) monoclonal antibody (34βE12) (Ready-to-Use)

This antibody is covered by our [Worry-Free Guarantee](#).

Citations: 14

[View Online »](#)

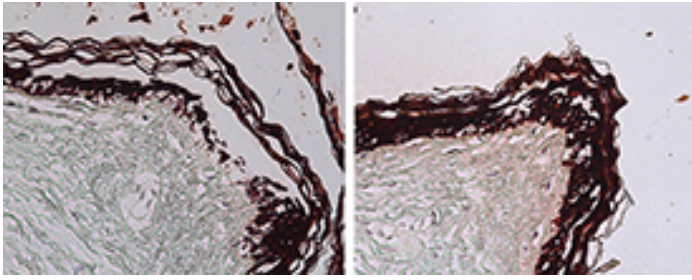
Ordering Information

[Order Online »](#)

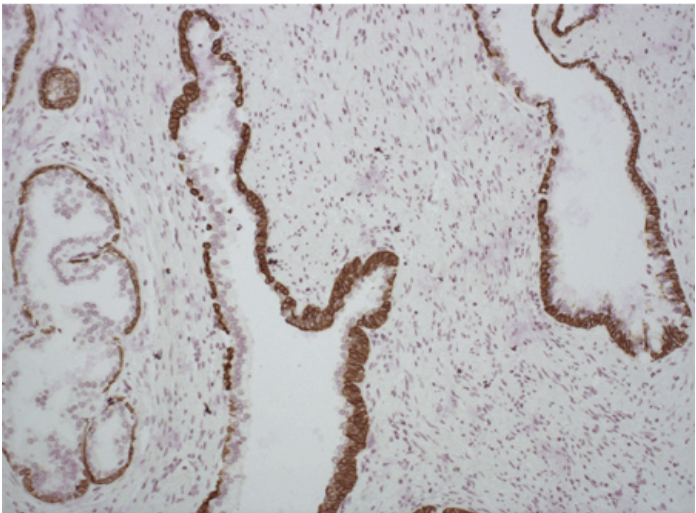
ENZ-30903	~6 µg - 6ml
-----------	-------------

Manuals, SDS & CofA

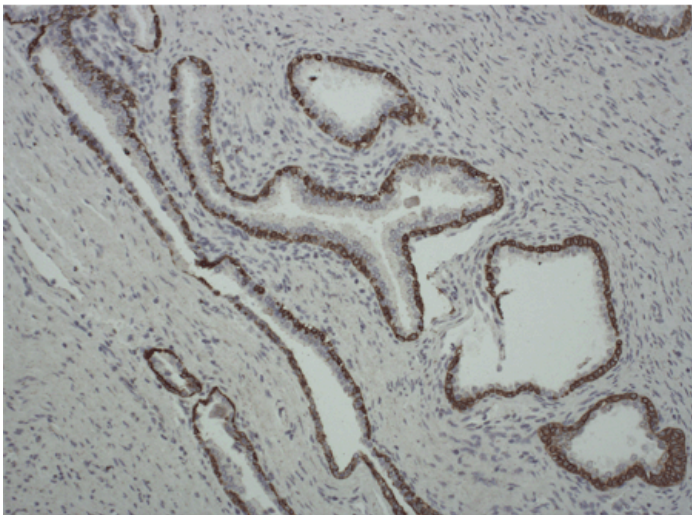
[View Online »](#)



Immunohistochemistry analysis of human skin tissue using Cytokeratin 1/5/10/14 (human), mAb (34 β E12), (Prod. No. ENZ-30903).



Prostate tissue assayed with Cytokeratin 1/5/10/14 (human) monoclonal antibody (34 β E12) (ENZ-30903). Developed with POLYVIEW® PLUS HRP (anti-mouse) reagent (ENZ-ACC104) and HIGHDEF® DAB Chromogen/Substrate Set (ENZ-ACC105).



Prostate tissue assayed with Cytokeratin 1/5/10/14 (human) monoclonal antibody (34 β E12) (ENZ-30903). Developed with POLYVIEW® PLUS HRP (anti-mouse) reagent (ENZ-ACC104) and HIGHDEF® DAB Chromogen/Substrate Set (ENZ-ACC105).

Handling & Storage

Handling Avoid freeze/thaw cycles.

Long Term Storage +4°C

Shipping Blue Ice

Regulatory Status

RUO - Research Use Only

Product Details

Alternative Name HMWCK, High molecular weight cytokeratin, Keratin-903

Application IHC (PS), WB

Clone 34βE12

Formulation Liquid. *Ready-to-use* solution in PBS containing 0.1% sodium azide and 1% BSA.

Host Mouse

Immunogen Keratin solubilized from human stratum corneum.

Isotype IgG1

Purity Detail Affinity purified.

Recommendation
Dilutions/Conditions

Immunohistochemistry (paraffin sections; for optimal results, fixation in alcohol-based fixatives, such as methacarn, is recommended. Pretreatment with proteolytic enzymes such as trypsin may be required when formalin-fixed sections are to be stained. For optimal staining of prostate tissue higher concentrations of protease and longer incubation times are recommended, e.g., 0.5% trypsin at 37°C for 2 to 4 hours. Choose a good quality enzyme-linked anti-mouse IgG1 antibody for detection)Suggested dilutions/conditions may not be available for all applications.Optimal conditions must be determined individually for each application.

Source Purified from ascites.

Species Reactivity Human

Specificity

34βE12 is specific for “high molecular weight” cytokeratins 1, 5, 10 and 14, corresponding to molecular weights 68, 58, 56.5 and 50 kDa, respectively, which are characteristically found in “complex” epithelium. The antibody reacts with all squamous and ductal epithelium as well as carcinomas such as squamous cell carcinoma and adenocarcinoma of ductal origin (e.g., breast, pancreas) but does not react with sarcoma, melanoma or lymphoma. This antibody reacts with benign small-acinar lesions of the prostate and has been shown to be useful as an adjunct in the identification of prostate carcinoma.

UniProt ID

P04264 (CK1), P13647 (CK5), P13645 (CK10), P02533 (CK14)

Worry-free Guarantee

This antibody is covered by our [Worry-Free Guarantee](#).



ENZO LIFE SCIENCES,
INC.
Phone: 800.942.0430
[info-
usa@enzolifesciences.com](mailto:info-usa@enzolifesciences.com)

European Sales Office
ENZO LIFE SCIENCES
(ELS) AG
Phone: +41 61 926 8989
[info-
eu@enzolifesciences.com](mailto:info-eu@enzolifesciences.com)

Belgium, The Netherlands
& Luxembourg
Phone: +32 3 466 0420
[info-
be@enzolifesciences.com](mailto:info-be@enzolifesciences.com)

France
Phone: +33 472 440 655
[info-
fr@enzolifesciences.com](mailto:info-fr@enzolifesciences.com)

Germany
Phone: +49 7621 5500 526
[info-
de@enzolifesciences.com](mailto:info-de@enzolifesciences.com)

UK & Ireland
Phone (UK customers):
0845 601 1488
Phone: +44 1392 825900
[info-
uk@enzolifesciences.com](mailto:info-uk@enzolifesciences.com)