

Cyclophilin A

polyclonal antibody

This antibody is covered by our [Worry-Free Guarantee](#).

Citations: 32

[View Online »](#)

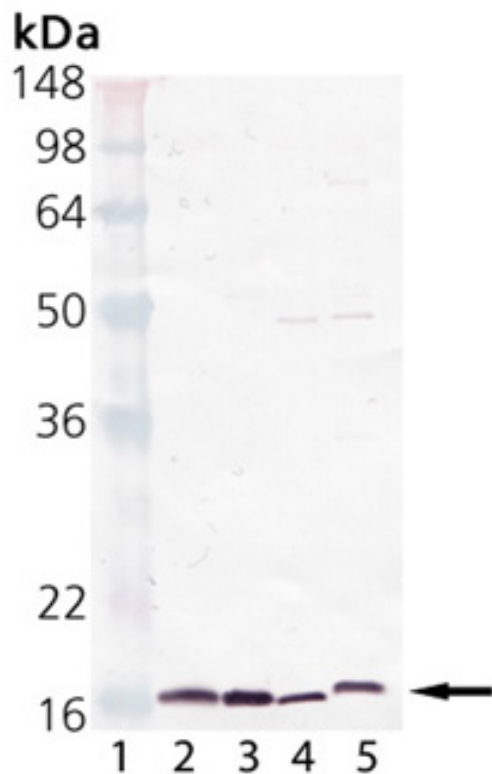
Ordering Information

[Order Online »](#)

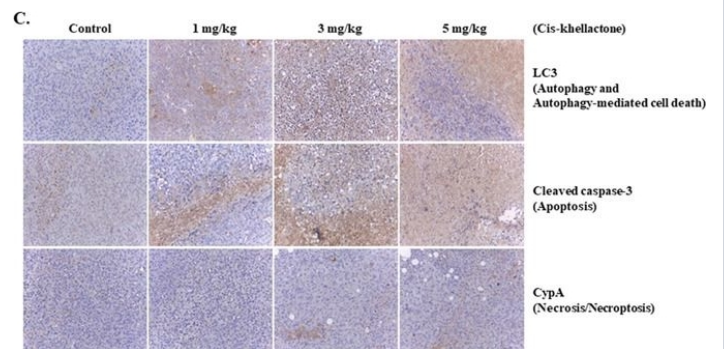
BML-SA296-0100	100µl
----------------	-------

Manuals, SDS & CofA

[View Online »](#)

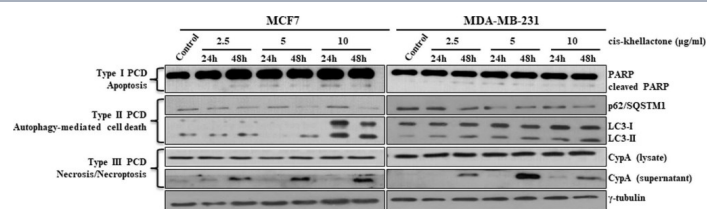


Western Blot analysis of Cyclophilin A, pAb . Lane 1: M.W. Marker, Lane 2: BML-SE105, Lane 3: Jurkat Cell Lysate, Lane 4: Rat Brain Extract, Lane 5: Mouse Brain Extract



In vivo assessment of cis-khellactone anti-tumor activity in a murine model(A) Change in tumor volume after cis-khellactone treatment of a nude mouse. Tumor-bearing mice were injected with MDA-MB-231 cancer cells as mentioned in Materials and Methods. When tumors were approximately 50 to 100 mm³ in volume, mice in each treatment group were intravenously injected via the tail vein with cis-khellactone (at a dose of 1, 3, or 5 mg/kg) once every 3 days. Control groups received only normal saline (*P<0.01, n = 5, Student's t test). (B) Representative images of H&E staining of five major organs (heart, lung, liver, spleen, and kidney) and tumor. Mice were sacrificed at 30 days after the initial drug administration and tissue samples were immediately collected. Scale bar = 140 μm. (C) Induction of three PCD in xenograft mice tumor model with MDA-MB-231 cells were tested by employing Immunohistochemistry (IHC). Three PCD were checked with cleaved caspase 3 for apoptosis, LC3 for autophagic cell death, and CypA for necrosis/necroptosis.

Image collected and cropped by CiteAb under a CC-BY license from the following publication: Anti-cancerous effect of cis-khellactone from *Angelica amurensis* through the induction of three programmed cell deaths. *Oncotarget* (2018)



Effect of cis-khellactone on three types of PCD (apoptosis, autophagy-mediated cell death, and necrosis/necroptosis) in MCF7 and MDA-MB-231 cancer cells. MCF7 and MDA-MB-231 cells were cultured and treated with 2.5, 5, and 10 µg/ml for 24 or 48 h, while control cells were treated with DMSO alone. Cell lysates were examined by Western blot analysis by using following corresponding biomarkers or regulatory proteins of the different types of cell death; PARP for apoptosis, p62 and LC3 for autophagy, and CypA for necrosis/necroptosis; γ-tubulin was used as an internal control. The result of Western blot was quantified by using ImageJ program.

Image collected and cropped by CiteAb under a CC-BY license from the following publication: Anti-cancerous effect of cis-khellactone from *Angelica amurensis* through the induction of three programmed cell deaths. *Oncotarget* (2018)

Handling & Storage

Handling	Avoid freeze/thaw cycles. After opening, prepare aliquots and store at -20°C.
Long Term Storage	-20°C
Shipping	Dry Ice

Regulatory Status

RUO - Research Use Only

Product Details

Alternative Name	CyPA, Peptidyl-prolyl cis-trans isomerase A
Application	ICC, WB
Formulation	Liquid. Neat serum.
Host	Rabbit
Immunogen	Recombinant human cyclophilin A conjugated to KLH.
Source	Whole rabbit serum.
Species Reactivity	Human, Mouse, Rat
UniProt ID	P62937
Worry-free Guarantee	This antibody is covered by our Worry-Free Guarantee .



ENZO LIFE SCIENCES,
INC.
Phone: 800.942.0430
[info-
usa@enzolifesciences.com](mailto:info-usa@enzolifesciences.com)

European Sales Office
ENZO LIFE SCIENCES
(ELS) AG
Phone: +41 61 926 8989
[info-
eu@enzolifesciences.com](mailto:info-eu@enzolifesciences.com)

Belgium, The Netherlands
& Luxembourg
Phone: +32 3 466 0420
[info-
be@enzolifesciences.com](mailto:info-be@enzolifesciences.com)

France
Phone: +33 472 440 655
[info-
fr@enzolifesciences.com](mailto:info-fr@enzolifesciences.com)

Germany
Phone: +49 7621 5500 526
[info-
de@enzolifesciences.com](mailto:info-de@enzolifesciences.com)

UK & Ireland
Phone (UK customers):
0845 601 1488
Phone: +44 1392 825900
[info-
uk@enzolifesciences.com](mailto:info-uk@enzolifesciences.com)