

Cyclophilin A (human) polyclonal antibody

Immunophilins are a family of soluble cytosolic receptors capable of binding to one of two major immunosuppressant agents - cyclosporin A (CsA) or FK506. Proteins that bind FK506 are termed FK506 Binding Proteins (FKBPs) and those that bind cyclosporin A are called cyclophilins (CyP).

Both CyP:CsA and FKBP:FK506 complexes have been shown to inhibit calcineurin, a calcium and calmodulin dependent protein phosphatase which has been implicated as an important signalling enzyme in T-cell activation, providing a possible mechanism of immunosuppression by CsA and FK506. Immunophilins function as peptidyl prolyl cis-trans-isomerases (PPIase) whose activity is inhibited by their respective immunosuppressant compounds. As PPIase's, immunophilins accelerate folding of some proteins both in vivo and in vitro by catalyzing slow steps in the initial folding and rearrangement of proline containing proteins.

Within the cyclophilin family, there are several different proteins which show a high degree of homology including CyPA, CyPB and CyPC. CyPA, also termed CyP-18, is the most abundant and ubiquitous cyclophilin found in all vertebrate tissues and is present in T-cells.

This antibody is covered by our [Worry-Free Guarantee](#).

Citations: 1

[View Online »](#)

Ordering Information

[Order Online »](#)

ALX-210-351-R400	400µl
------------------	-------

Manuals, SDS & CofA

[View Online »](#)

Fig. 1

28 kDa -

17 kDa -

10 kDa -

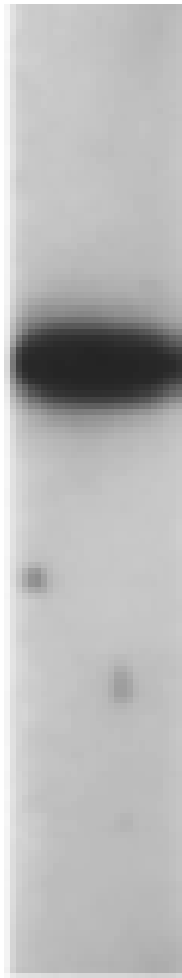


Figure 1: Western blot on 0.5 ug recombinant human CyPA using cyclophilin A (human), pAb (Prod. No. [ALX-210-351](#)).^{""}, Cyclophilin A (human) polyclonal antibody Western blot, Cyclophilin A (human) polyclonal antibody Western blot, yes

ALX-210-356, ALX-210-

356_IHC.gif, [http://static.enzolifesciences.com/fileadmin/files/image/ALX-](http://static.enzolifesciences.com/fileadmin/files/image/ALX-210-356_IHC.gif)

210-356_IHC.gif, Immunohistochemistry of actinin-4

distribution in rat kidney using PAb to α -Actinin-4 (Prod.

No. ALX-210-356), α -Actinin-4 polyclonal antibody

Immunohistochemistry, α -Actinin-4 polyclonal antibody

Immunohistochemistry, yes

ALX-210-356, ALX-210-

356_WB.gif, [http://static.enzolifesciences.com/fileadmin/files/image/ALX-](http://static.enzolifesciences.com/fileadmin/files/image/ALX-210-356_WB.gif)

210-356_WB.gif, Western blot of mouse kidney (lane 1)

and brain (lane 2) using PAb to α -Actinin-4 (Prod. No.

ALX-210-356), α -Actinin-4 polyclonal antibody Western

blot, α -Actinin-4 polyclonal antibody Western blot, yes

ALX-210-356, ALX-210-

356_Immunoblot.gif, [http://static.enzolifesciences.com/fileadmin/files/image/ALX-](http://static.enzolifesciences.com/fileadmin/files/image/ALX-210-356_Immunoblot.gif)

210-356_Immunoblot.gif, Isoform and species cross-

reactivity in immunoblots determined with solid phase

bound synthetic peptides.

Spot 1: QTNDYMQPEEDWD – Actinin-1 (human

Handling	Avoid freeze/thaw cycles.
Long Term Storage	-20°C
Shipping	Blue Ice

Alternative Name	CyPA, Peptidyl-prolyl cis-trans isomerase A
Application	WB
Application Notes	Detects a prominent band of ~18kDa representing recombinant human cyclophilin A by Western blot. Does not detect endogenous levels of cyclophilin A. Also detects hamster cyclophilin A in CHO cells.
Formulation	Liquid. In PBS containing 0.05% sodium azide.
Host	Rabbit
Immunogen	Recombinant human cyclophilin A.
Purity Detail	Purified IgG.
Recommendation Dilutions/Conditions	Western Blot (1:300)Suggested dilutions/conditions may not be available for all applications.Optimal conditions must be determined individually for each application.
Species Reactivity	Hamster, Human
Specificity	Recognizes overexpressed human cyclophilin A. Does not detect endogenous levels of cyclophilin A. Also detects hamster cyclophilin A in CHO cells.
UniProt ID	P62937
Worry-free Guarantee	This antibody is covered by our Worry-Free Guarantee



ENZO LIFE SCIENCES,
INC.
Phone: 800.942.0430
[info-
usa@enzolifesciences.com](mailto:info-usa@enzolifesciences.com)

European Sales Office
ENZO LIFE SCIENCES
(ELS) AG
Phone: +41 61 926 8989
[info-
eu@enzolifesciences.com](mailto:info-eu@enzolifesciences.com)

Belgium, The Netherlands
& Luxembourg
Phone: +32 3 466 0420
[info-
be@enzolifesciences.com](mailto:info-be@enzolifesciences.com)

France
Phone: +33 472 440 655
[info-
fr@enzolifesciences.com](mailto:info-fr@enzolifesciences.com)

Germany
Phone: +49 7621 5500 526
[info-
de@enzolifesciences.com](mailto:info-de@enzolifesciences.com)

UK & Ireland
Phone (UK customers):
0845 601 1488
Phone: +44 1392 825900
[info-
uk@enzolifesciences.com](mailto:info-uk@enzolifesciences.com)