

Cyclin D1 monoclonal antibody (DCS6)

Cyclins are a family of proteins which function as the regulatory subunits of cyclin/cyclin-dependent kinase (Cdk) holoenzymes, mediating entry into and progression through the cell cycle. Each cyclin is expressed in a temporal fashion during the cell cycle, partnering with a specific Cdk to activate its protein kinase activity. The most well defined mitotic cyclins are: cyclin D, which partners with cdks 4 and 6 during early G1 phase; cyclin E, which activates Cdk2 in the G1 to S phase transition; cyclin A, which utilizes Cdks 1 and 2 during progression through S phase and into G2; and cyclin B, which activates Cdk1 in M-phase promotion.

This antibody is covered by our [Worry-Free Guarantee](#).

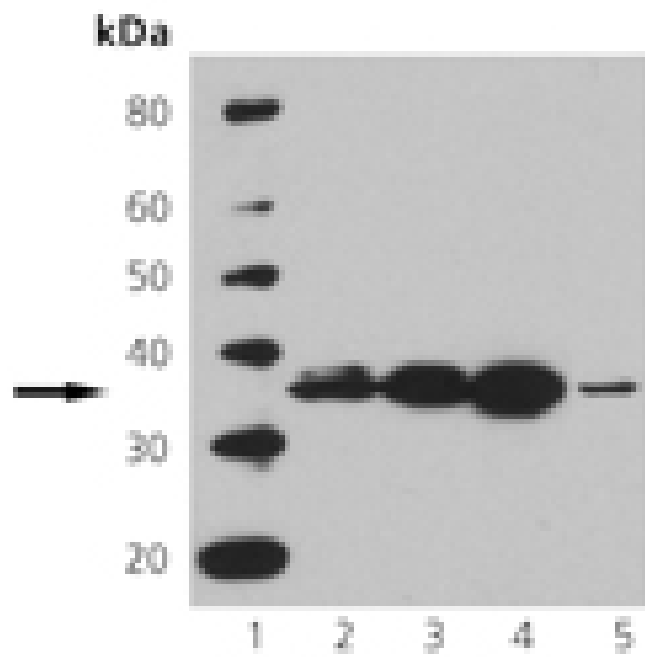
Ordering Information

[Order Online »](#)

ADI-905-776-100	100µg
-----------------	-------

Manuals, SDS & CofA

[View Online »](#)



Western blot analysis of Cyclin D1. Lane 1: MW, Lane 2: 3T3, Lane 3: L929, Lane 4: PC-12, Lane 5: A431.

Handling & Storage

Handling Avoid freeze/thaw cycles.

Long Term Storage -20°C

Shipping Blue Ice

Regulatory Status RUO - Research Use Only

Product Details

Alternative Name CCND1

Application WB

Application Notes Detects a band of ~36kDa by Western blot.

Clone DCS6

Formulation Liquid. In PBS, pH 7.2, containing 50% glycerol and 0.09% sodium azide.

Host Mouse

Immunogen Recombinant full length human Cyclin D1.

Purity Detail Protein G affinity purified.

Recommendation Dilutions/Conditions Western Blot (1µg/ml, ECL)Suggested dilutions/conditions may not be available for all applications.Optimal conditions must be determined individually for each application.

Source Purified from mouse ascites.

Species Reactivity Human, Mouse, Rat

UniProt ID P24385

Worry-free Guarantee This antibody is covered by our [Worry-Free Guarantee](#) .



ENZO LIFE SCIENCES,
INC.
Phone: 800.942.0430
[info-
usa@enzolifesciences.com](mailto:info-usa@enzolifesciences.com)

European Sales Office
ENZO LIFE SCIENCES
(ELS) AG
Phone: +41 61 926 8989
[info-
eu@enzolifesciences.com](mailto:info-eu@enzolifesciences.com)

Belgium, The Netherlands
& Luxembourg
Phone: +32 3 466 0420
[info-
be@enzolifesciences.com](mailto:info-be@enzolifesciences.com)

France
Phone: +33 472 440 655
[info-
fr@enzolifesciences.com](mailto:info-fr@enzolifesciences.com)

Germany
Phone: +49 7621 5500 526
[info-
de@enzolifesciences.com](mailto:info-de@enzolifesciences.com)

UK & Ireland
Phone (UK customers):
0845 601 1488
Phone: +44 1392 825900
[info-
uk@enzolifesciences.com](mailto:info-uk@enzolifesciences.com)