

# Cyclin D1 monoclonal antibody (5D4)

Cyclins are a family of proteins which function as the regulatory subunits of cyclin/cyclin-dependent kinase (Cdk) holoenzymes, mediating entry into and progression through the cell cycle. Each cyclin is expressed in a temporal fashion during the cell cycle, partnering with a specific Cdk to activate its protein kinase activity. The most well defined mitotic cyclins are: cyclin D, which partners with cdks 4 and 6 during early G1 phase; cyclin E, which activates Cdk2 in the G1 to S phase transition; cyclin A, which utilizes Cdks 1 and 2 during progression through S phase and into G2; and cyclin B, which activates Cdk1 in M-phase promotion.

This antibody is covered by our [Worry-Free Guarantee](#).

Citations: 2

[View Online »](#)

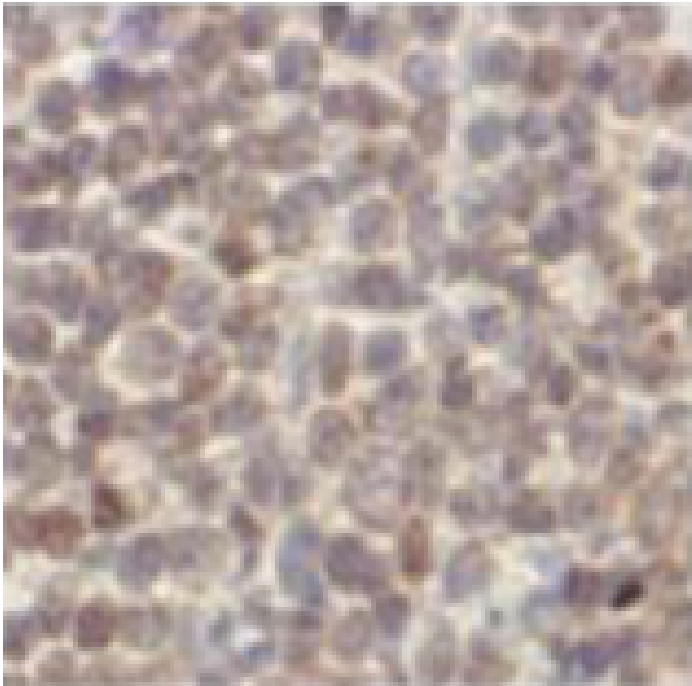
Ordering Information

[Order Online »](#)

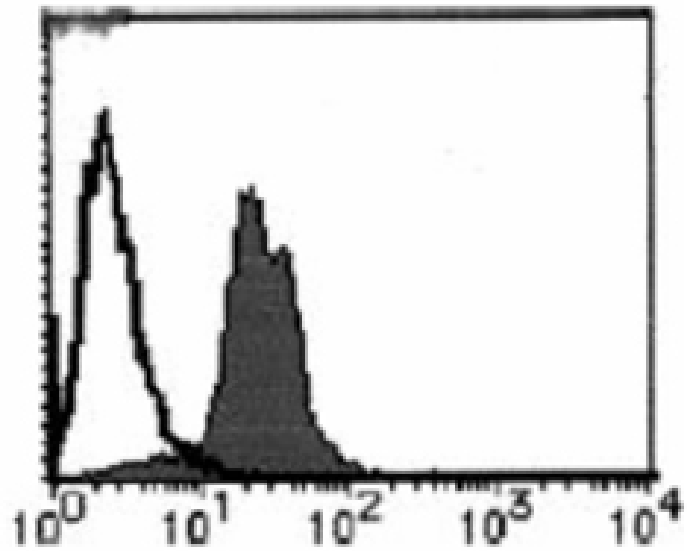
|                 |       |
|-----------------|-------|
| ADI-KAM-CC200-E | 100µg |
|-----------------|-------|

Manuals, SDS & CofA

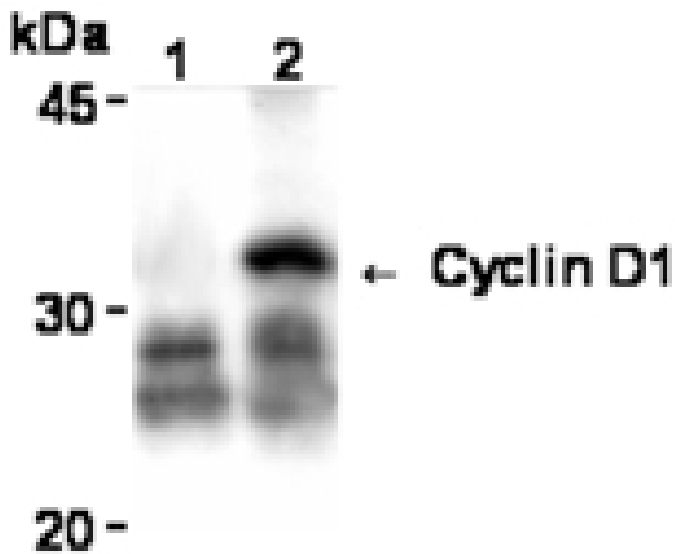
[View Online »](#)



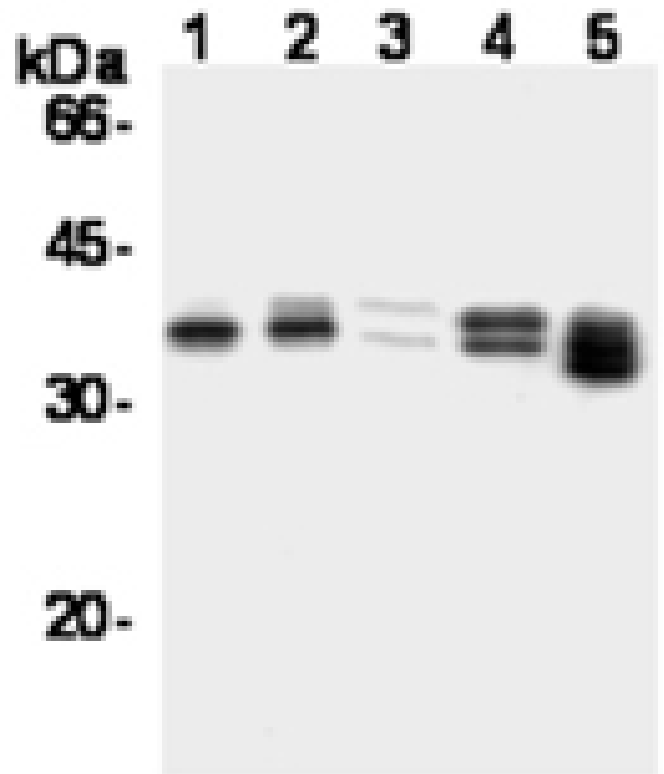
Immunohistochemistry analysis of Cyclin D1 on paraffin embedded section of human mantle cell lymphoma with Cyclin D1 mAb (5D4).



Flow cytometry analysis of Cyclin D1 expression in HeLa cells. Open histogram indicates the reaction of Isotypic control to the cells. Shaded histogram indicates the reaction of Cyclin D1 mAb (5D4) to the cells.



Immunoprecipitation analysis of cyclin D1 from ZR75-1 cells with Mouse IgG2a (1) or Cyclin D1 mAb (5D4) (2). After immunoprecipitated with the antibody, immunocomplex was resolved on SDS-PAGE and immunoBlotted with 553.



Western blot analysis of ZR- 75-1 (1), MCF7 (2), HeLa (3), WR19L (4) and NIH/3T3 (5) cells probed with Cyclin D1 mAb (5D4).

## Handling & Storage

Long Term Storage -20°C

Shipping Blue Ice

**Regulatory Status** RUO - Research Use Only

## Product Details

|                                     |  |
|-------------------------------------|--|
| Alternative Name                    | CCND1  |
| Application                         | Flow Cytometry, ICC, IHC (PS), IP, WB  |
| Application Notes                   | Detects a band of ~36kDa by Western blot.  |
| Clone                               | 5D4  |
| Formulation                         | Liquid. In PBS, pH 7.2, containing 50% glycerol.   |
| Host                                | Mouse  |
| Immunogen                           | Recombinant human cyclin D1.   |
| Isotype                             | IgG2a  |
| Purity Detail                       | Protein A affinity purified.   |
| Recommendation Dilutions/Conditions | Flow Cytometry (10µg/ml final concentration)Immunohistochemistry (10µg/ml, frozen/paraffin)Immunoprecipitation (1-10µg/200µg cell extract from 5×10 <sup>6</sup> cells)Western Blot (1µg/ml, ECL)Suggested dilutions/conditions may not be available for all applications.Optimal conditions must be determined individually for each application. |
| Species Reactivity                  | Human, Mouse   |
| UniProt ID                          | P24385   |
| Worry-free Guarantee                | This antibody is covered by our <a href="#">Worry-Free Guarantee</a>   |

Last modified: May 29, 2024



ENZO LIFE SCIENCES,  
INC.  
Phone: 800.942.0430  
[info-  
usa@enzolifesciences.com](mailto:info-usa@enzolifesciences.com)

European Sales Office  
ENZO LIFE SCIENCES  
(ELS) AG  
Phone: +41 61 926 8989  
[info-  
eu@enzolifesciences.com](mailto:info-eu@enzolifesciences.com)

Belgium, The Netherlands  
& Luxembourg  
Phone: +32 3 466 0420  
[info-  
be@enzolifesciences.com](mailto:info-be@enzolifesciences.com)

France  
Phone: +33 472 440 655  
[info-  
fr@enzolifesciences.com](mailto:info-fr@enzolifesciences.com)

Germany  
Phone: +49 7621 5500 526  
[info-  
de@enzolifesciences.com](mailto:info-de@enzolifesciences.com)

UK & Ireland  
Phone (UK customers):  
0845 601 1488  
Phone: +44 1392 825900  
[info-  
uk@enzolifesciences.com](mailto:info-uk@enzolifesciences.com)