

CX-4945

Potent and selective inhibitor of the protein kinase CK2

CX-4945 is a first-in-class, orally active, potent and selective inhibitor of the protein kinase CK2, with an IC_{50} of 1 nM.

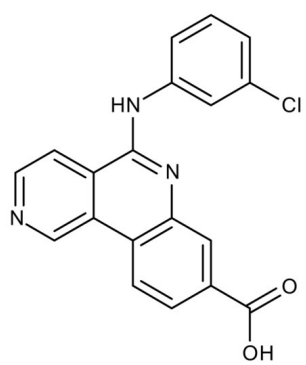
Ordering Information

[Order Online »](#)

ENZ-CHM151-0001	1mg
-----------------	-----

Manuals, SDS & CofA

[View Online »](#)



Handling & Storage

Use/Stability	As indicated on product label or CoA when stored as recommended.
Short Term Storage	+4°C
Long Term Storage	-20°C
Shipping	Ambient Temperature

Regulatory Status RUO - Research Use Only

Product Details

Alternative Name	Silmitasertib, 5-((3-Chlorophenyl)amino)benzo[c][2,6]naphthyridine-8-carboxylic acid
Appearance	Orange powder.
CAS	1009820-21-6
Couple Target	Casein kinase
Couple Type	Inhibitor
Formula	$C_{19}H_{12}ClN_3O_2$
Identity	Determined by EM-MS, NMR
MW	349.8
Purity	≥95% (HPLC)
Solubility	Soluble in DMSO (16mg/ml) or ethanol (1mg/ml).

Last modified: May 29, 2024



ENZO LIFE SCIENCES,
INC.
Phone: 800.942.0430
info-usa@enzolifesciences.com

European Sales Office
ENZO LIFE SCIENCES
(ELS) AG
Phone: +41 61 926 8989
info-eu@enzolifesciences.com

Belgium, The Netherlands
& Luxembourg
Phone: +32 3 466 0420
info-be@enzolifesciences.com

France
Phone: +33 472 440 655
info-fr@enzolifesciences.com

Germany
Phone: +49 7621 5500 526
info-de@enzolifesciences.com

UK & Ireland
Phone (UK customers):
0845 601 1488
Phone: +44 1392 825900
info-uk@enzolifesciences.com