

CSP polyclonal antibody

Cysteine string protein (CSP) is a 34 kDa rat brain protein localized to the cytoplasmic surface of the synaptic vesicle. CSP is believed to perform similar functions in the assembly of synaptic vesicle proteins which are essential to membrane trafficking.

This antibody is covered by our [Worry-Free Guarantee](#).

Citations: 9

[View Online »](#)

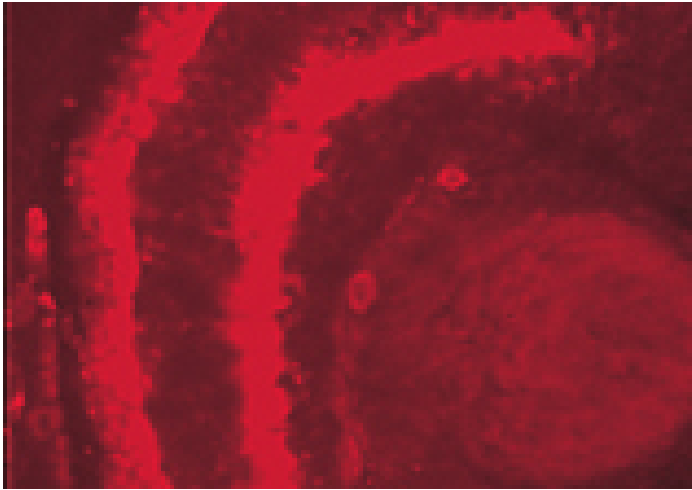
Ordering Information

[Order Online »](#)

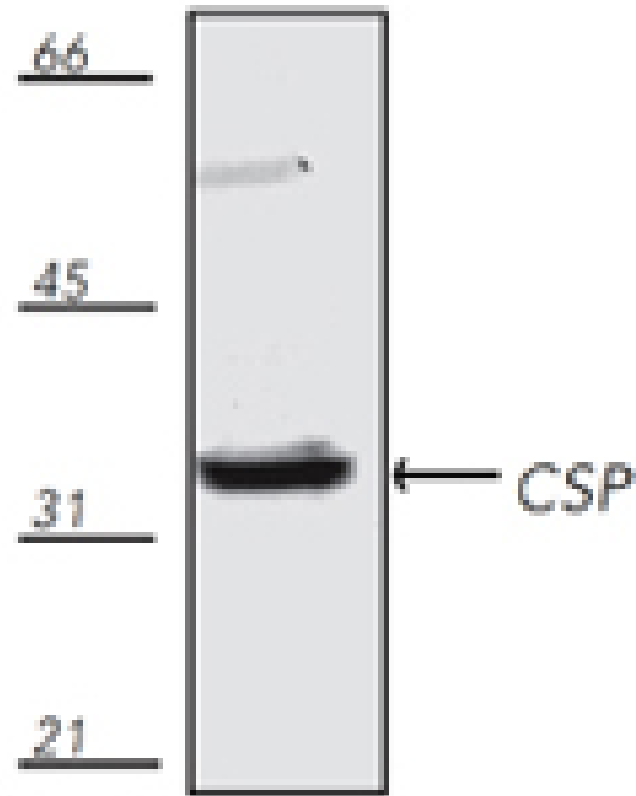
ADI-VAP-SV003-E	100µg
-----------------	-------

Manuals, SDS & CofA

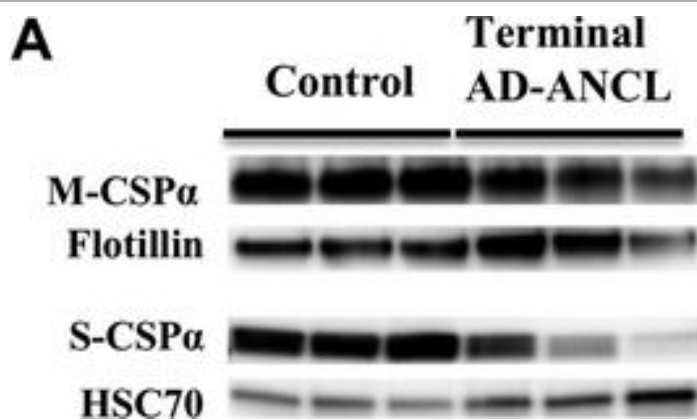
[View Online »](#)



Immunohistochemistry analysis of *Xenopus* embryonic retina section stained with CSP, pAb.



Western blot analysis of mouse brain tissue extract, probed with CSP, pAb.



Presynaptic protein levels in the brains of terminal AD-ANCL patients. a Representative western blots (top) and semi-quantitative analysis (graph, bottom) displaying the protein levels of CSP α in the membrane (M-CSP α) (normalized to Flotillin) and cytosolic/soluble (S-CSP α) (normalized to HSC70) fractions from the occipital lobe of three controls and three terminal AD-ANCL patients. The graphs show the expression level of the indicated proteins normalized to flotillin or HSC70 expression. b Representative western blots (top) and semi-quantitative analysis (graph, bottom) show the protein levels of SNAP-25, vesicle-associated membrane protein 2 (VAMP2/ Synaptobrevin), Syntaxin 1 (STX1), and Synaptophysin (SYP) in the occipital lobe from three controls and three terminal AD-ANCL patients in the membrane fraction. Values represent the mean \pm S.E.M. of three independent experiments. **, $p \leq 0.01$; ***, $p \leq 0.001$ using Student's t test

Image collected and cropped by CiteAb under a CC-BY license from the following publication: Clinically early-stage CSP α mutation carrier exhibits remarkable terminal stage neuronal pathology with minimal evidence of synaptic loss. *Acta Neuropathol Commun* (2015)

Handling	Avoid freeze/thaw cycles.
Long Term Storage	-20°C
Shipping	Blue Ice

Regulatory Status RUO - Research Use Only

Product Details

Cysteine String Protein, DnaJC5

IHC, IP, WB

Detects a band of ~34kDa by Western blot.

Liquid. In PBS, pH 7.2, containing 50% glycerol and 0.09% sodium azide.

U39320

Rabbit

Synthetic peptide corresponding to the sequence near the C-terminus of rat CSP. The sequence is completely conserved in bovine.

Immunoaffinity purified.

Immunohistochemistry, Immunoprecipitation
(0.5µg/ml)Western Blot (1:2,000, colorimetric)Suggested
dilutions/conditions may not be available for all
applications.Optimal conditions must be determined
individually for each application.

Purified from rabbit serum.

Bovine, Mouse, Rat, Xenopus

P60905

Worry-free Guarantee

This antibody is covered by our [Worry-Free Guarantee](#)

Last modified: May 29, 2024



ENZO LIFE SCIENCES,
INC.
Phone: 800.942.0430
[info-
usa@enzolifesciences.com](mailto:info-usa@enzolifesciences.com)

European Sales Office
ENZO LIFE SCIENCES
(ELS) AG
Phone: +41 61 926 8989
[info-
eu@enzolifesciences.com](mailto:info-eu@enzolifesciences.com)

Belgium, The Netherlands
& Luxembourg
Phone: +32 3 466 0420
[info-
be@enzolifesciences.com](mailto:info-be@enzolifesciences.com)

France
Phone: +33 472 440 655
[info-
fr@enzolifesciences.com](mailto:info-fr@enzolifesciences.com)

Germany
Phone: +49 7621 5500 526
[info-
de@enzolifesciences.com](mailto:info-de@enzolifesciences.com)

UK & Ireland
Phone (UK customers):
0845 601 1488
Phone: +44 1392 825900
[info-
uk@enzolifesciences.com](mailto:info-uk@enzolifesciences.com)