

CRP (human) ELISA kit

Sensitive (8.876 ng/ml) ELISA kit for the quantification of CRP, an early biomarker for inflammation

The CRP (human) ELISA kit is a complete, colorimetric, competitive immunoassay kit for the quantitative determination of human CRP in serum and plasma with results in 3 hours.

C-Reactive Protein (CRP) is a pentraxin family protein that is widely used as a biomarker for systemic inflammation and tissue injury. Its primary role in innate immunity is to function as an opsonin for pathogens via activation of the complement pathway and through binding to Fc gamma receptors. CRP has been shown to play an important role in a variety of pathological pathways such as chronic inflammatory disorders, myocardial infarction, pulmonary disorders, atherosclerosis, cancer, metabolic syndrome, and depression.

Citations: 7

[View Online »](#)

Ordering Information

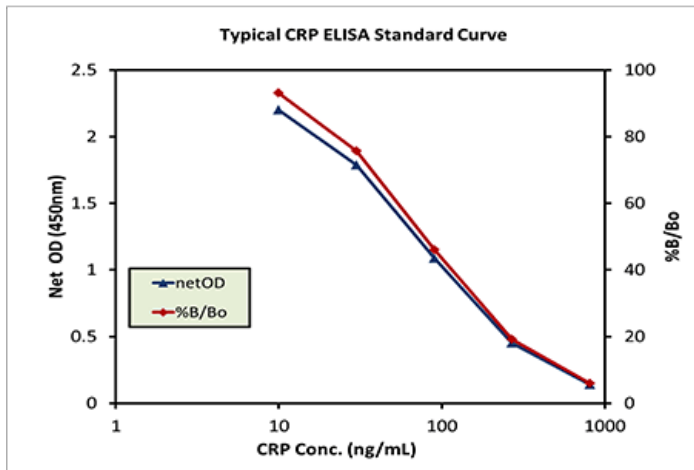
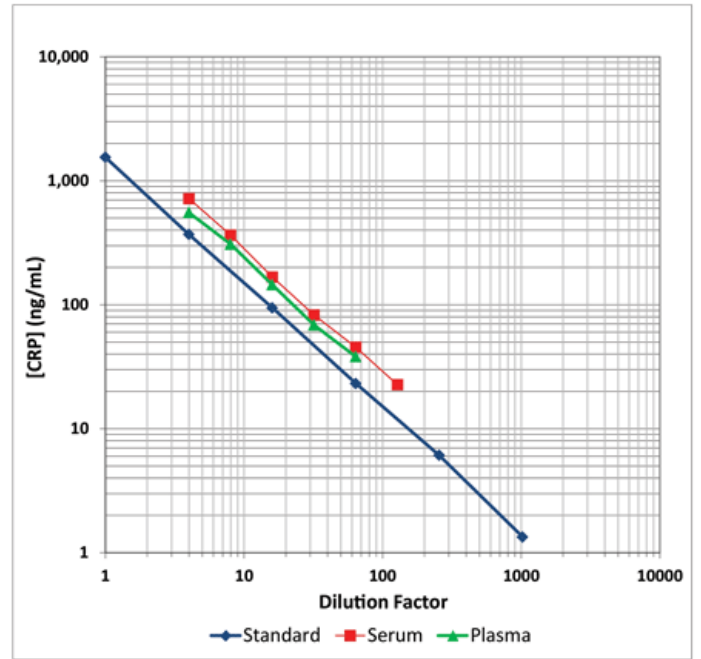
[Order Online »](#)

ENZ-KIT102-0001	96 wells
-----------------	----------

Manuals, SDS & CofA

[View Online »](#)

- Sensitive measurement of CRP, detecting as little as 8.876 ng/ml
- Negligible reactivity for similar family members
- High throughput format with results in 3 hours for up to 40 samples in duplicate
- Fully quantitative results that surpass semi-quantitative Western blot analysis



Handling & Storage

Use/Stability	All components of this kit are stable at 4°C until the kit's expiration date except for the CRP Standard, CRP Antibody, and CRP Conjugate which must be stored at -20°C.
Short Term Storage	+4°C
Long Term Storage	-20°C
Shipping	Blue Ice

Regulatory Status

RUO - Research Use Only

Product Details

Alternative Name	C-reactive protein
Application	Colorimetric detection, ELISA
Application Notes	For the quantitative determination of human C-reactive protein in serum and plasma.
Assay Time	3 hours
Compatibility	This product is compatible with the Absorbance 96 Plate Reader .
Contents	Microtiter Plate, Assay Buffer, Standard, Conjugate, Antibody, Streptavidin-HRP, TMB Substrate, Stop Solution, Wash Buffer Concentrate
Crossreactivity	No cross reactivity to similar family molecule (<0.015% human serum amyloid P component).
Sensitivity	8.876 ng/ml (range 10 – 810 ng/ml)
Species Reactivity	Human
UniProt ID	P02741
Wavelength	450 nm



ENZO LIFE SCIENCES,
INC.
Phone: 800.942.0430
[info-
usa@enzolifesciences.com](mailto:info-usa@enzolifesciences.com)

European Sales Office
ENZO LIFE SCIENCES
(ELS) AG
Phone: +41 61 926 8989
[info-
eu@enzolifesciences.com](mailto:info-eu@enzolifesciences.com)

Belgium, The Netherlands
& Luxembourg
Phone: +32 3 466 0420
[info-
be@enzolifesciences.com](mailto:info-be@enzolifesciences.com)

France
Phone: +33 472 440 655
[info-
fr@enzolifesciences.com](mailto:info-fr@enzolifesciences.com)

Germany
Phone: +49 7621 5500 526
[info-
de@enzolifesciences.com](mailto:info-de@enzolifesciences.com)

UK & Ireland
Phone (UK customers):
0845 601 1488
Phone: +44 1392 825900
[info-
uk@enzolifesciences.com](mailto:info-uk@enzolifesciences.com)