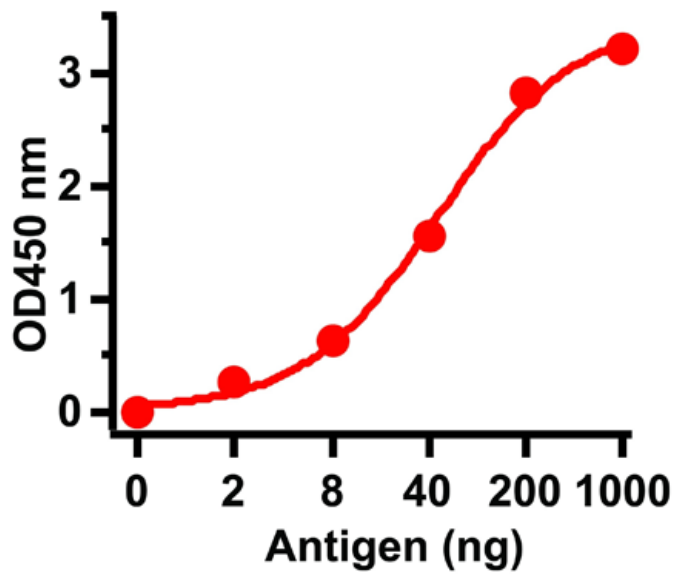


Coronavirus (SARS-CoV Envelope) polyclonal antibody

This antibody is covered by our [Worry-Free Guarantee](#).

Manuals, SDS & CofA

[View Online »](#)



A sandwich ELISA was performed using immunogen as coating antigen and the SARS-CoV Envelope antibody as the capture antibody.

Handling & Storage

Handling Avoid freeze/thaw cycles.

Long Term Storage -20°C

Shipping Blue Ice

Regulatory Status RUO - Research Use Only

Product Details

Application ELISA

Formulation Liquid. In PBS containing 0.02% sodium azide.

Host Rabbit

Immunogen Peptide corresponding to 11 amino acids near the carboxy terminus of SARS-CoV Envelope protein. The immunogen is located within the last 50 amino acids of SARS-CoV Envelope.

Isotype IgG

Purity Detail Affinity purified.

Species Reactivity Coronavirus

Worry-free Guarantee This antibody is covered by our [Worry-Free Guarantee](#)

Last modified: May 29, 2024



ENZO LIFE SCIENCES,
INC.
Phone: 800.942.0430
info-usa@enzolifesciences.com

European Sales Office
ENZO LIFE SCIENCES
(ELS) AG
Phone: +41 61 926 8989
info-eu@enzolifesciences.com

Belgium, The Netherlands
& Luxembourg
Phone: +32 3 466 0420
info-be@enzolifesciences.com

France
Phone: +33 472 440 655
info-fr@enzolifesciences.com

Germany
Phone: +49 7621 5500 526
info-de@enzolifesciences.com

UK & Ireland
Phone (UK customers):
0845 601 1488
Phone: +44 1392 825900
info-uk@enzolifesciences.com