

Connective tissue growth factor polyclonal antibody

This antibody is covered by our [Worry-Free Guarantee](#).

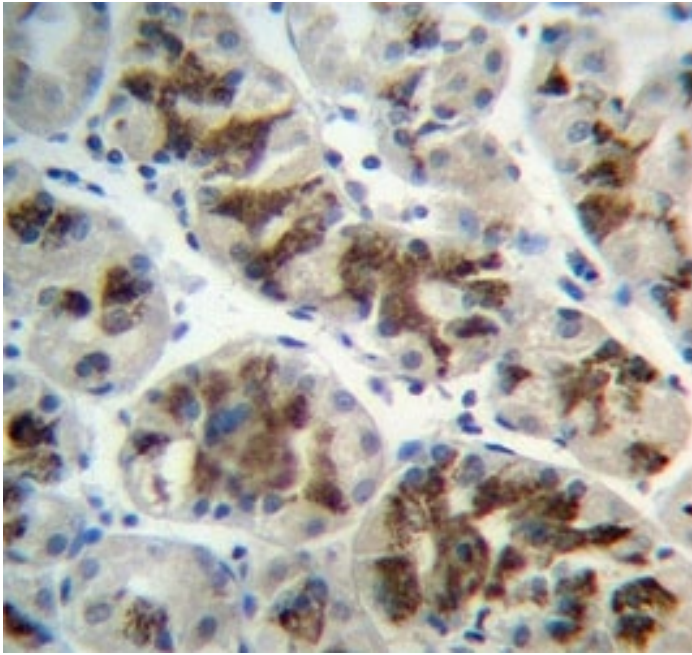
Ordering Information

[Order Online »](#)

ENZ-ABS886-0400	0.4ml
-----------------	-------

Manuals, SDS & CofA

[View Online »](#)



IHC analysis of FFPE human stomach and CTGF antibody



Western blot testing of CTGF antibody and NCI-H460 lysate

Handling & Storage

Handling	Aliquot the CTGF antibody and store frozen at -20°C or colder. Avoid freeze/thaw cycles.
Long Term Storage	-20°C
Shipping	Blue Ice

Regulatory Status

RUO - Research Use Only

Product Details

Alternative Name	CTGF, CCN2, CCN family member 2, Insulin-like growth factor-binding protein 8, IGFBP-8
Application	ELISA, IHC, WB
Formulation	Liquid. In 1X PBS, pH 7.4, containing 0.09% sodium azide.
Host	Rabbit
Immunogen	Human CTGF (aa 166-193).
Isotype	Ig
Purity Detail	Antigen affinity purified.
Recommendation Dilutions/Conditions	Immunohistochemistry (paraffin sections) (1:10-1:50)Western blot (1:1,000)Suggested dilutions/conditions may not be available for all applications.Optimal conditions must be determined individually for each application.
Species Reactivity	Human
UniProt ID	P29279
Worry-free Guarantee	This antibody is covered by our Worry-Free Guarantee



ENZO LIFE SCIENCES,
INC.
Phone: +1 949 212 9129
usa@enzolifesciences.com

European Sales Office
ENZO LIFE SCIENCES
(ELS) AG
Phone: +41 61 926 8989
info-be@enzolifesciences.com

Belgium, The Netherlands
& Luxembourg
Phone: +32 3 466 0420
info-fr@enzolifesciences.com

France
Phone: +33 472 440 655
info-fr@enzolifesciences.com

Germany
Phone: +49 7621 5500 526
info-de@enzolifesciences.com

UK & Ireland
Phone (UK customers):
0845 601 1488
Phone: +44 1392 825900
info-uk@enzolifesciences.com