

# Cloпамide

Cl<sup>-</sup> channel blocker

Clinically useful diuretic. Cloпамide selectively inhibits the chloride the sodium chloride cotransporter.

Citations: 1

[View Online »](#)

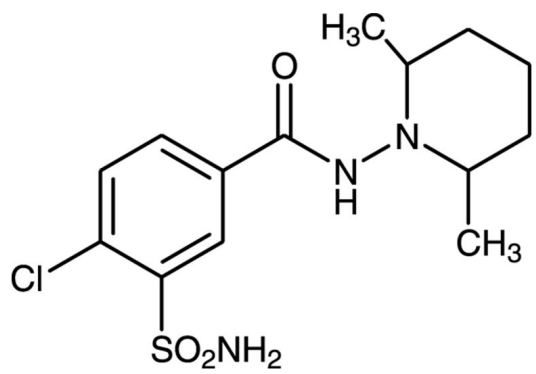
Ordering Information

[Order Online »](#)

BML-CM112-0500	500mg
----------------	-------

Manuals, SDS & CofA

[View Online »](#)



## Handling & Storage

<b>Use/Stability</b>	As indicated on product label or CoA when stored as recommended. Store, as supplied, at room temperature for up to 1 year. Store solutions at -20°C for up to 3 months.
<b>Long Term Storage</b>	Ambient
<b>Shipping</b>	Ambient Temperature

## Regulatory Status

RUO - Research Use Only

## Product Details

<b>Appearance</b>	White solid.
<b>CAS</b>	636-54-4
<b>Couple Target</b>	Chloride channel
<b>Couple Type</b>	Blocker
<b>Formula</b>	$C_{14}H_{20}ClN_3O_3S$
<b>MW</b>	345.8
<b>MeltingPoint</b>	248-249°C
<b>Purity</b>	≥98% (HPLC)
<b>Solubility</b>	Soluble in DMSO (20 mg/ml) or ethanol (5 mg/ml warm).

Last modified: May 29, 2024



ENZO LIFE SCIENCES,  
INC.  
Phone: 800.942.0430  
[info-usa@enzolifesciences.com](mailto:info-usa@enzolifesciences.com)

European Sales Office  
ENZO LIFE SCIENCES  
(ELS) AG  
Phone: +41 61 926 8989  
[info-eu@enzolifesciences.com](mailto:info-eu@enzolifesciences.com)

Belgium, The Netherlands  
& Luxembourg  
Phone: +32 3 466 0420  
[info-fr@enzolifesciences.com](mailto:info-fr@enzolifesciences.com)

France  
Phone: +33 472 440 655  
[info-fr@enzolifesciences.com](mailto:info-fr@enzolifesciences.com)

Germany  
Phone: +49 7621 5500 526  
[info-de@enzolifesciences.com](mailto:info-de@enzolifesciences.com)

UK & Ireland  
Phone (UK customers):  
0845 601 1488  
Phone: +44 1392 825900  
[info-uk@enzolifesciences.com](mailto:info-uk@enzolifesciences.com)