

CEACAM8 (human) monoclonal antibody (GM2H6)

CEA-related cell adhesion molecule 8 (CEACAM8) belongs to the carcinoembryonic antigen (CEA) gene family. It encodes a glycosylphosphatidylinositol (GPI)-linked glycoprotein with a molecular mass of 95kD and is expressed in cells of the granulocyte-lineage. It is expressed in neutrophils and eosinophils and is characterized as a granulocyte-specific activation antigen. Therefore CEACAM8 could serve as a marker for granulocyte activities. Like all members of the CEA family, it consists of a single N domain, with structural homology to the immunoglobulin variable domains, followed by two immunoglobulin constant-like A and B domains.

This antibody is covered by our [Worry-Free Guarantee](#).

Ordering Information

[Order Online »](#)

ALX-805-088-C100	100µg
------------------	-------

Manuals, SDS & CofA

[View Online »](#)

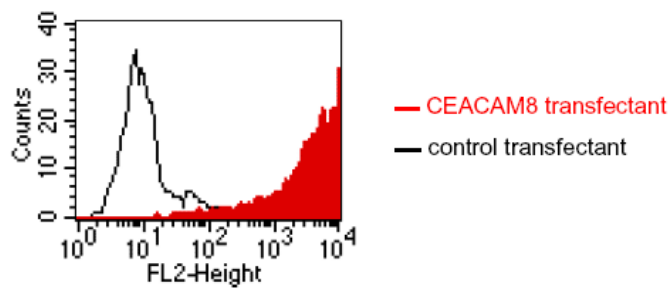


Figure 1: Specificity testing by flow cytometry.**Method:** FACS analysis of BOSC23 cells using CEACAM8 (human), mAb (GM2H6) (Prod. No. ALX- 805-088). BOSC23 cells were transiently transfected with an expression vector encoding either CEACAM8 (red curve) or an irrelevant protein (control transfectant). Binding of CEACAM8 (human), mAb (GM2H6) was detected with a PE conjugated secondary antibody. A positive signal was obtained only with CEACAM8 transfected cells.

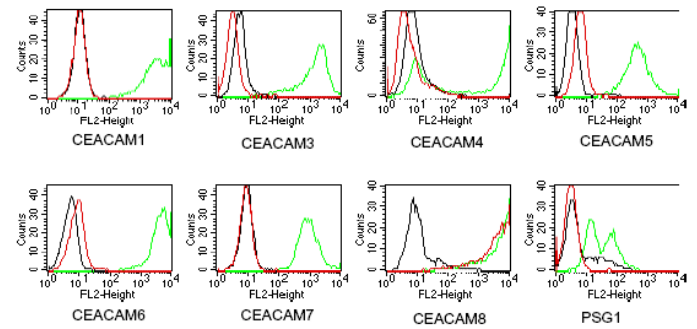


Figure 2: Antibody cross-reactivity with members of the CEA family.**Method:** BOSC23 cells were transiently transfected with expression vectors containing either the cDNA of CEACAM1, CEACAM3-8 or PSG. The latter expressed as a membrane bound fusion protein. Expression of the constructs was tested with monoclonal antibodies known to recognize the corresponding proteins (green curves). An irrelevant monoclonal antibody served as a negative control (black curves). For specificity testing, CEACAM8 (human), mAb (GM2H6) (Prod. No. ALX- 805-088) was tested on all CEACAM transfectants. A positive signal was obtained only with CEACAM8 transfected cells (red curve).

Handling & Storage

Handling	For maximum product recovery after thawing, centrifuge the vial before opening the cap. Avoid freeze/thaw cycles.
Short Term Storage	+4°C
Long Term Storage	-20°C
Shipping	Blue Ice

Regulatory Status

RUO - Research Use Only

Product Details

Alternative Name	Carcinoembryonic antigen-related cell adhesion molecule 8, CD66b
Application	ELISA, Flow Cytometry
Clone	GM2H6
Crossreactivity	Does not cross-react with human CEACAM1, 3, 4, 5, 6, 7, or PSG1.
Formulation	Liquid. In PBS, pH 7.2. Contains no preservatives.
Host	Mouse
Immunogen	Vector containing the cDNA of human CEACAM8.
Isotype	IgG1
Purity Detail	Protein G-affinity purified.
Quality Control	Specificity routinely tested by flow cytometry on CEACAM8 transfected BOSC23 cells.
Recommendation Dilutions/Conditions	Competitive ELISA (1.2µg/106 cells)Flow Cytometry (1:200-1:400)Suggested dilutions/conditions may not be available for all applications.Optimal conditions must be determined individually for each application.
Species Reactivity	Human
UniProt ID	P31997

Worry-free Guarantee

This antibody is covered by our [Worry-Free Guarantee](#).



ENZO LIFE SCIENCES,
INC.
Phone: 800.942.0430
[info-
usa@enzolifesciences.com](mailto:info-usa@enzolifesciences.com)

European Sales Office
ENZO LIFE SCIENCES
(ELS) AG
Phone: +41 61 926 8989
[info-
eu@enzolifesciences.com](mailto:info-eu@enzolifesciences.com)

Belgium, The Netherlands
& Luxembourg
Phone: +32 3 466 0420
[info-
be@enzolifesciences.com](mailto:info-be@enzolifesciences.com)

France
Phone: +33 472 440 655
[info-
fr@enzolifesciences.com](mailto:info-fr@enzolifesciences.com)

Germany
Phone: +49 7621 5500 526
[info-
de@enzolifesciences.com](mailto:info-de@enzolifesciences.com)

UK & Ireland
Phone (UK customers):
0845 601 1488
Phone: +44 1392 825900
[info-
uk@enzolifesciences.com](mailto:info-uk@enzolifesciences.com)