

CDK4 polyclonal antibody

This antibody is covered by our [Worry-Free Guarantee](#).

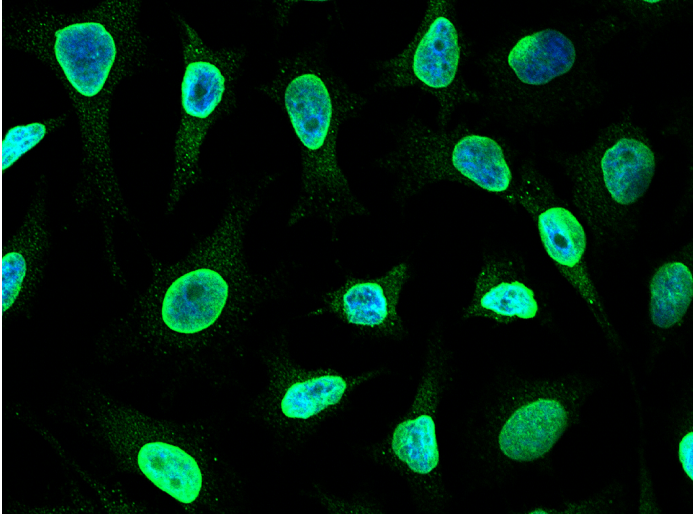
Ordering Information

[Order Online »](#)

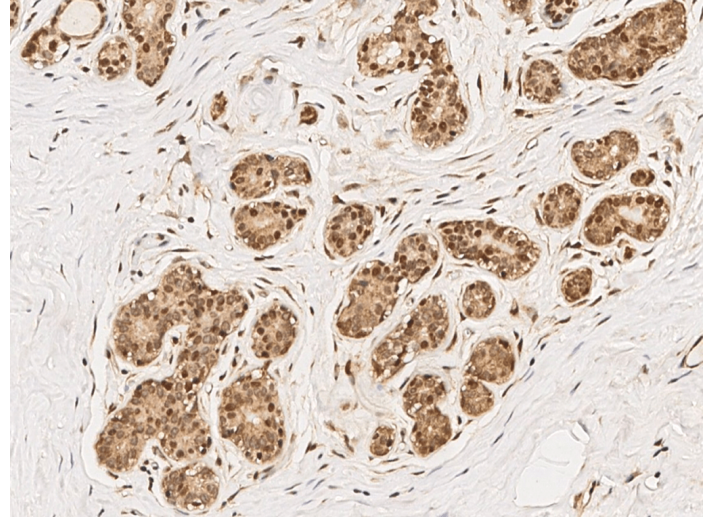
| | |
|-----------------|-------|
| ENZ-ABS960-0100 | 100µl |
|-----------------|-------|

Manuals, SDS & CofA

[View Online »](#)

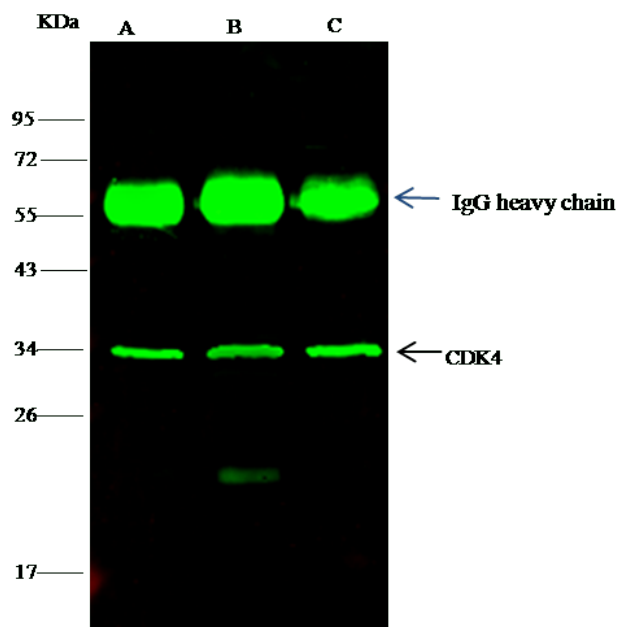


Immunofluorescence staining of CDK4 in HeLa cells. Cells were fixed with 4% PFA, permeabilized with 0.3% Triton X-100 in PBS, blocked with 10% serum, and incubated with rabbit anti-human CDK4 polyclonal antibody (1:1000) at 4 °C overnight. Then cells were stained with the Alexa Fluor®488-conjugated Goat Anti-rabbit IgG secondary antibody (green) and counterstained with DAPI (blue). Positive staining was localized to cytoplasm and nucleus.

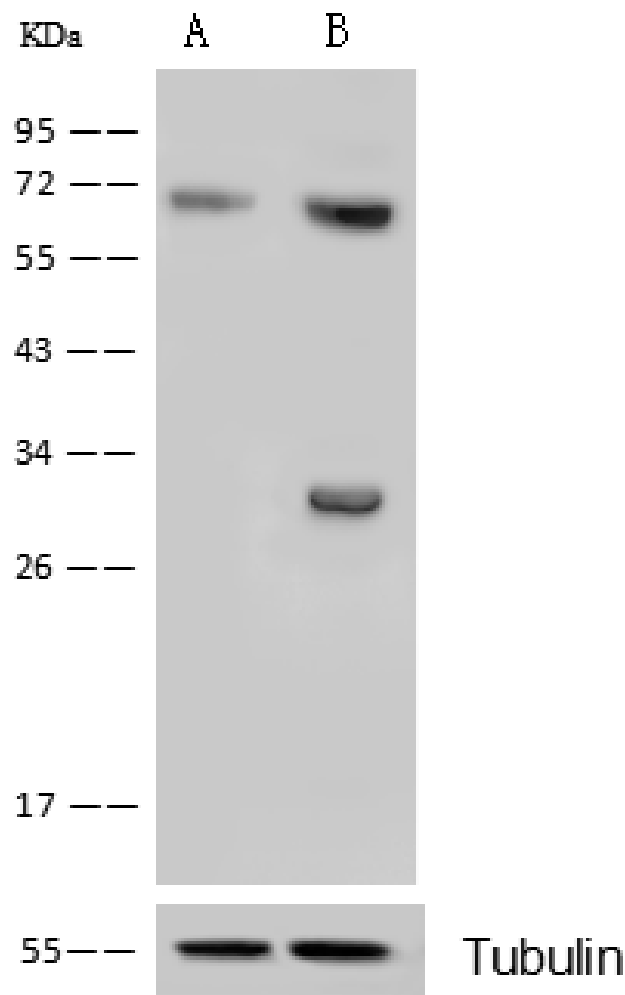


© Sino Biological Inc. All rights reserved

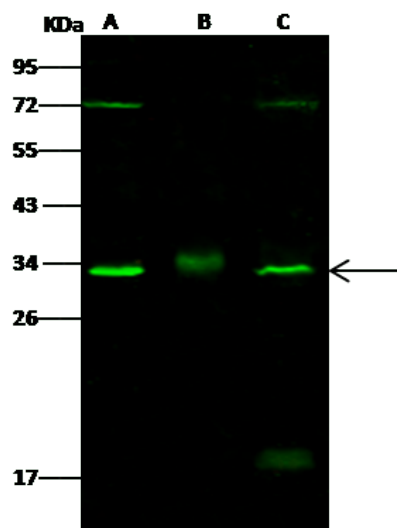
Immunochemical staining of human CDK4 in human breast carcinoma with rabbit polyclonal antibody (1:1000, formalin-fixed paraffin embedded sections).



CDK4 was immunoprecipitated using: Lane A:0.5 mg HepG2 Whole Cell Lysate Lane B:0.5 mg k562 Whole Cell Lysate Lane C:0.5 mg Hela Whole Cell Lysate, 2 μ L anti-CDK4 rabbit polyclonal antibody and 15 μ l of 50 % Protein G agarose. Primary antibody: Anti-CDK4 rabbit polyclonal antibody, at 1:100 dilution Secondary antibody: Dylight 800-labeled antibody to rabbit IgG (H+L), at 1:5000 dilution. Developed using the odssey technique. Performed under reducing conditions. Observed band size: 34 kDa



Anti-CDK4 rabbit polyclonal antibody at 1:500 dilution. Lane A: CDK4 knockout Hela Whole Cell Lysate. Lane B: Hela Whole Cell Lysate. Lysates/proteins at 10 μ g per lane. Secondary Goat Anti- Rabbit IgG H&L (Dylight 800) at 1/10000 dilution. Developed using the ECL technique. Performed under reducing conditions. Observed band size:33 kDa.



Anti-CDK4 rabbit polyclonal antibody at 1:500 dilution
Lane A: HeLa Whole Cell Lysate Lane B: MCF7 Whole
Cell Lysate Lane C: K562 Whole Cell Lysate:
Lysates/proteins at 30 µg per lane. Secondary Goat
Anti- Rabbit IgG H&L (Dylight 800) at 1/10000 dilution.
Developed using the Odyssey technique. Performed
under reducing conditions. Observed band size:33 kDa.

Handling & Storage

Handling Protected from light. Avoid freeze-thaw cycles.

Long Term Storage -20°C

Shipping Blue Ice

Regulatory Status RUO - Research Use Only

Product Details

Alternative Name Cyclin-dependent kinase 4

Application ELISA, ICC, IF, IHC (PS), IP, WB

Formulation Liquid. 0.2 µm filtered solution in PBS. Preservative free.

Host Rabbit

Immunogen Recombinant human CDK4 protein.

Isotype IgG

Purity Detail Protein A and antigen affinity purified.

Recommendation Dilutions/Conditions Western Blot (1:500-1:1'000)ELISA (1:5'000-1:10'000)Immunohistochemistry (paraffin sections) (1:500-1:2'000)Immunocytochemistry (1:300-1:10'000)Immunofluorescence (1:300-1:10'000)Immunoprecipitation (1-4µl/mg of lysate)Suggested dilutions/conditions may not be available for all applications.Optimal conditions must be determined individually for each application.

Species Reactivity Human

Worry-free Guarantee This antibody is covered by our [Worry-Free Guarantee](#)



ENZO LIFE SCIENCES,
INC.
September 17, 2024
info-
usa@enzolifesciences.com

European Sales Office
ENZO LIFE SCIENCES
(EU) AG
Phone: +41 61 926 8989
info-
eu@enzolifesciences.com

Belgium, The Netherlands
& Luxembourg
Phone: +32 3 466 0420
info-
be@enzolifesciences.com

France
Phone: +33 472 440 655
info-
fr@enzolifesciences.com

Germany
Phone: +49 7621 5500 526
info-
de@enzolifesciences.com

UK & Ireland
Phone (UK customers):
0845 601 1488
Phone: +44 1392 825900
info-
uk@enzolifesciences.com