

# Cdc25A monoclonal antibody (DCS-120)

The cell division cycle (cdc) group of proteins consists of many protein classes, including cyclin dependent kinases (Cdks), phosphoprotein phosphatases, mitogen activated kinases, small GTPases, and cyclins. These proteins play a central role in regulating progression through the cell cycle through the formation and/or modification of key substrates. Cdc42 belongs to the Rho-family of GTPases, and promotes actin polymerization to form filopodia. Cdc25A is a dual-specificity phosphatase that acts on phosphorylated threonine and tyrosine residues of Cdks, leading to binding and activation of their partner cyclins.

This antibody is covered by our [Worry-Free Guarantee](#).

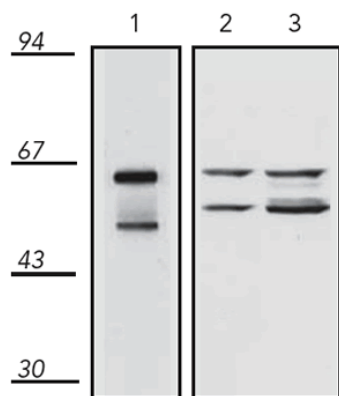
## Ordering Information

[Order Online »](#)

|                 |       |
|-----------------|-------|
| ADI-KAM-CC085-E | 100µg |
|-----------------|-------|

## Manuals, SDS & CofA

[View Online »](#)



← *cdc25A*

Western blot analysis of human HeLa cell lysate (1), mouse N1H/3T3 cell lysate (2), and rat Rat-1 cell lysate (3), probed with KAM-CC085.

# Handling & Storage

Long Term Storage                    -20°C

Shipping                                Blue Ice

# Regulatory Status

RUO - Research Use Only

# Product Details

|                                     |  |
|-------------------------------------|--|
| Alternative Name                    | Cell division cycle 25A  |
| Application                         | IP, WB   |
| Clone                               | DCS-120  |
| Formulation                         | Liquid. In PBS, pH 7.2, containing 50% glycerol.   |
| GenBank ID                          | AY137580   |
| Gene/Protein Identifier             | NM_001789 (RefSeq)   |
| Host                                | Mouse  |
| Immunogen                           | Recombinant human cdc25A.  |
| Isotype                             | IgG2a  |
| Purity Detail                       | Protein A affinity purified.   |
| Recommendation Dilutions/Conditions | Immunoprecipitation (3µg/200-300µl)Western Blot (1-5µg/ml, ECL)Suggested dilutions/conditions may not be available for all applications.Optimal conditions must be determined individually for each application. |
| Species Reactivity                  | Human, Mouse, Rat  |
| UniProt ID                          | P30304   |
| Worry-free Guarantee                | This antibody is covered by our <a href="#">Worry-Free Guarantee</a> .   |



ENZO LIFE SCIENCES,  
INC.  
Phone: 800.942.0430  
[info-  
usa@enzolifesciences.com](mailto:info-usa@enzolifesciences.com)

European Sales Office  
ENZO LIFE SCIENCES  
(ELS) AG  
Phone: +41 61 926 8989  
[info-  
eu@enzolifesciences.com](mailto:info-eu@enzolifesciences.com)

Belgium, The Netherlands  
& Luxembourg  
Phone: +32 3 466 0420  
[info-  
be@enzolifesciences.com](mailto:info-be@enzolifesciences.com)

France  
Phone: +33 472 440 655  
[info-  
fr@enzolifesciences.com](mailto:info-fr@enzolifesciences.com)

Germany  
Phone: +49 7621 5500 526  
[info-  
de@enzolifesciences.com](mailto:info-de@enzolifesciences.com)

UK & Ireland  
Phone (UK customers):  
0845 601 1488  
Phone: +44 1392 825900  
[info-  
uk@enzolifesciences.com](mailto:info-uk@enzolifesciences.com)