

CD40 (human) monoclonal antibody (mAb 89)

This antibody is covered by our [Worry-Free Guarantee](#).

Citations: 1

[View Online »](#)

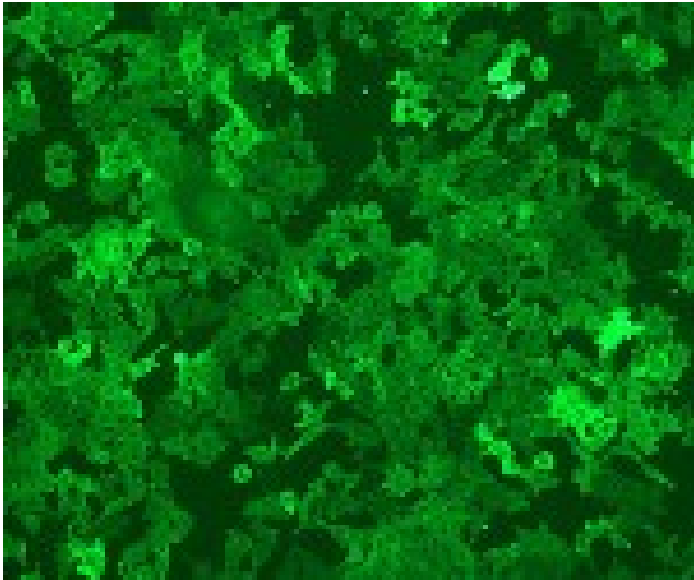
Ordering Information

[Order Online »](#)

ENZ-ABS148-0100	100µg
-----------------	-------

Manuals, SDS & CofA

[View Online »](#)



Immunohistochemistry analysis of CD40-transfected L cells stained with CD40 (human) mAb, clone mAb89.

Handling & Storage

Short Term Storage -20°C

Long Term Storage -80°C

Shipping Blue Ice

Regulatory Status

RUO - Research Use Only

Product Details

Alternative Name	Tumor necrosis factor receptor superfamily member 5, TNFRSF 5, B-cell surface antigen CD40, Bp50, CD40L receptor, CDw40
Application	Flow Cytometry, FUNC, IHC (PS)
Application Notes	Functional Application: cell activation.
Clone	mAb 89
Formulation	Liquid. In TRIS-NaCl, pH 8.
Host	Mouse
Immunogen	Anti-μ activated tonsillar human B cells.
Isotype	IgG1
Purity Detail	Purified using QMA Hyper D ion exchange chromatography
Recommendation Dilutions/Conditions	Flow Cytometry (surface)Suggested dilutions/conditions may not be available for all applications.Optimal conditions must be determined individually for each application.
Species Reactivity	Human
UniProt ID	P25942
Worry-free Guarantee	This antibody is covered by our Worry-Free Guarantee



ENZO LIFE SCIENCES,
INC.
Phone: 800.942.0430
[info-
usa@enzolifesciences.com](mailto:info-usa@enzolifesciences.com)

European Sales Office
ENZO LIFE SCIENCES
(ELS) AG
Phone: +41 61 926 8989
[info-
eu@enzolifesciences.com](mailto:info-eu@enzolifesciences.com)

Belgium, The Netherlands
& Luxembourg
Phone: +32 3 466 0420
[info-
be@enzolifesciences.com](mailto:info-be@enzolifesciences.com)

France
Phone: +33 472 440 655
[info-
fr@enzolifesciences.com](mailto:info-fr@enzolifesciences.com)

Germany
Phone: +49 7621 5500 526
[info-
de@enzolifesciences.com](mailto:info-de@enzolifesciences.com)

UK & Ireland
Phone (UK customers):
0845 601 1488
Phone: +44 1392 825900
[info-
uk@enzolifesciences.com](mailto:info-uk@enzolifesciences.com)