

CD162 recombinant monoclonal antibody (PSGL1/8135R)

This antibody is covered by our [Worry-Free Guarantee](#).

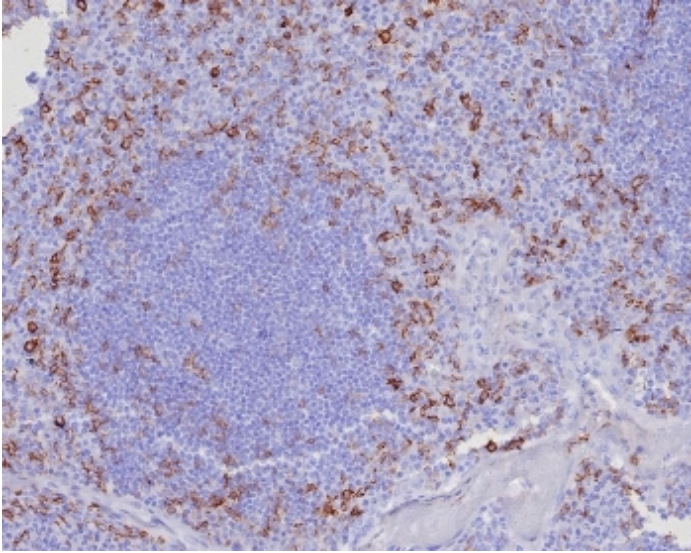
Ordering Information

[Order Online »](#)

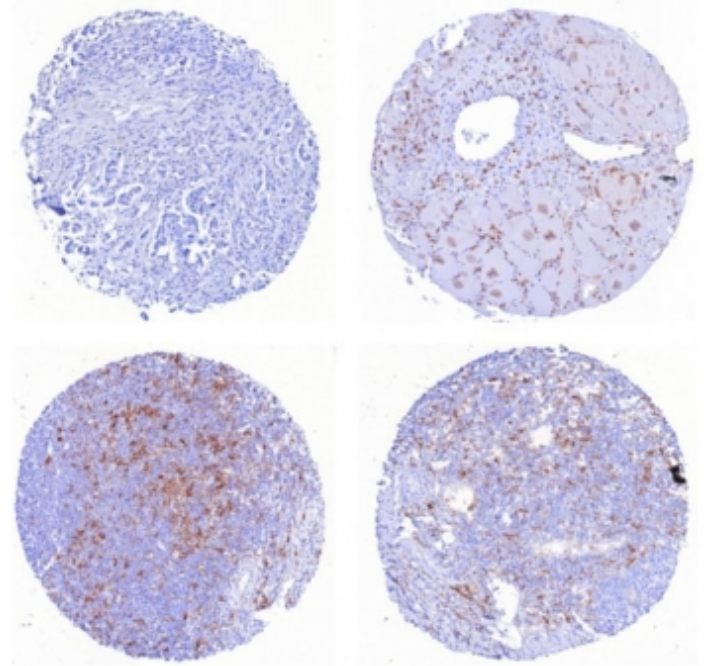
ENZ-ABS877-0100	100µg
-----------------	-------

Manuals, SDS & CofA

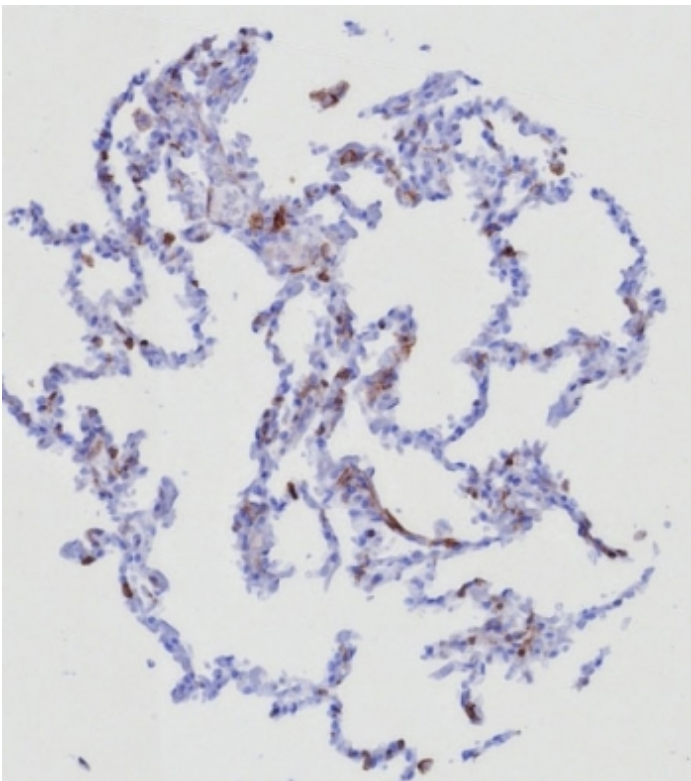
[View Online »](#)



IHC staining of FFPE human tonsil tissue with CD162 antibody (clone PSGL1/8135R). HIER: boil tissue sections in pH 9 10mM Tris with 1mM EDTA for 20 min and allow to cool before testing.



IHC staining of FFPE human (1) mammary carcinoma (2) transverse muscle (3) tonsil and (4) tonsil tissue with CD162 antibody (clone PSGL1/8135R) . HIER: boil tissue sections in pH 9 10mM Tris with 1mM EDTA for 20 min and allow to cool before testing.



IHC staining of FFPE human lung tissue with CD162 antibody (clone PSGL1/8135R). HIER: boil tissue sections in pH 9 10mM Tris with 1mM EDTA for 20 min and allow to cool before testing.

Handling & Storage

Handling	Aliquot the CD162 antibody and store frozen at -20°C or colder. Avoid freeze/thaw cycles.
Long Term Storage	-20°C
Shipping	Blue Ice

Regulatory Status RUO - Research Use Only

Product Details

Alternative Name	P-selectin glycoprotein ligand 1, PSGL-1
Application	IHC (PS)
Clone	PSGL1/8135R
Formulation	Liquid. 0.2 mg/ml in 1X PBS containing 0.1 mg/ml BSA (US sourced), 0.05% sodium azide.
Host	Rabbit
Immunogen	Recombinant full-length human CD162.
Isotype	IgGk
Purity Detail	Protein A/G affinity purified.
Recommendation Dilutions/Conditions	Immunohistochemistry (FFPE) (1-2µg/ml for 30 min at RT)Suggested dilutions/conditions may not be available for all applications.Optimal conditions must be determined individually for each application.
Species Reactivity	Human
UniProt ID	Q14242

Worry-free Guarantee This antibody is covered by our [Worry-Free Guarantee](#).



ENZO LIFE SCIENCES,
INC.
Phone: 800.942.0430
[info-
usa@enzolifesciences.com](mailto:info-usa@enzolifesciences.com)

European Sales Office
ENZO LIFE SCIENCES
(ELS) AG
Phone: +41 61 926 8989
[info-
eu@enzolifesciences.com](mailto:info-eu@enzolifesciences.com)

Belgium, The Netherlands
& Luxembourg
Phone: +32 3 466 0420
[info-
be@enzolifesciences.com](mailto:info-be@enzolifesciences.com)

France
Phone: +33 472 440 655
[info-
fr@enzolifesciences.com](mailto:info-fr@enzolifesciences.com)

Germany
Phone: +49 7621 5500 526
[info-
de@enzolifesciences.com](mailto:info-de@enzolifesciences.com)

UK & Ireland
Phone (UK customers):
0845 601 1488
Phone: +44 1392 825900
[info-
uk@enzolifesciences.com](mailto:info-uk@enzolifesciences.com)