

CD147 recombinant monoclonal antibody (125)

This antibody is covered by our [Worry-Free Guarantee](#).

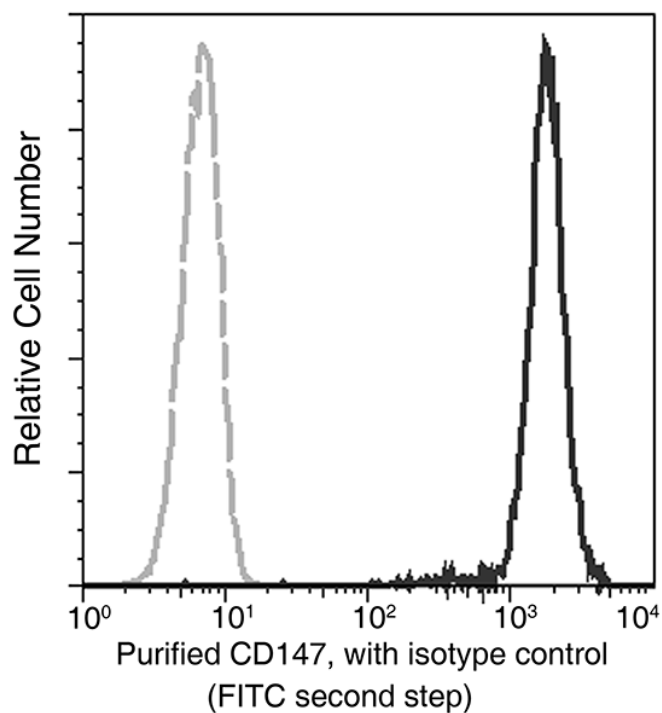
Ordering Information

[Order Online »](#)

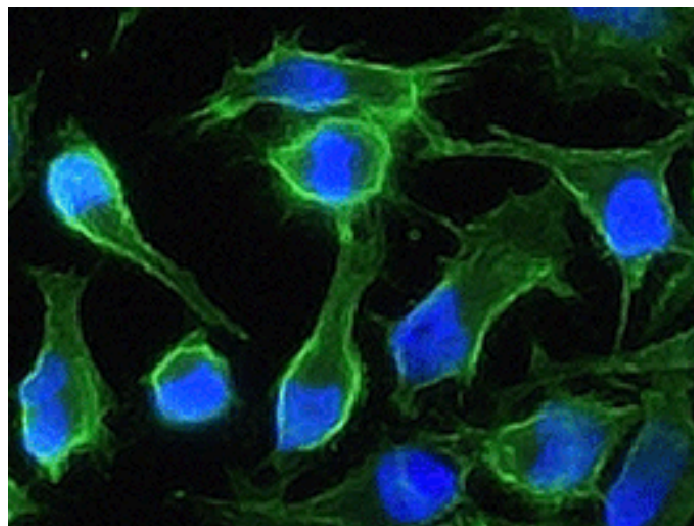
ENZ-ABS939-0100	100µl
-----------------	-------

Manuals, SDS & CofA

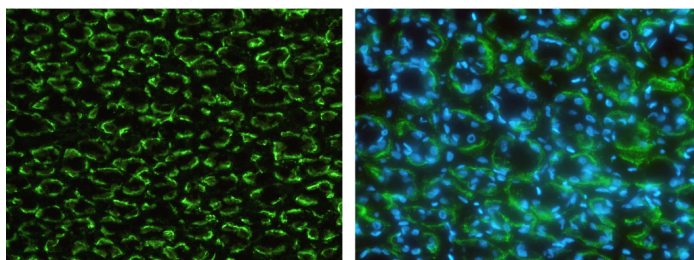
[View Online »](#)



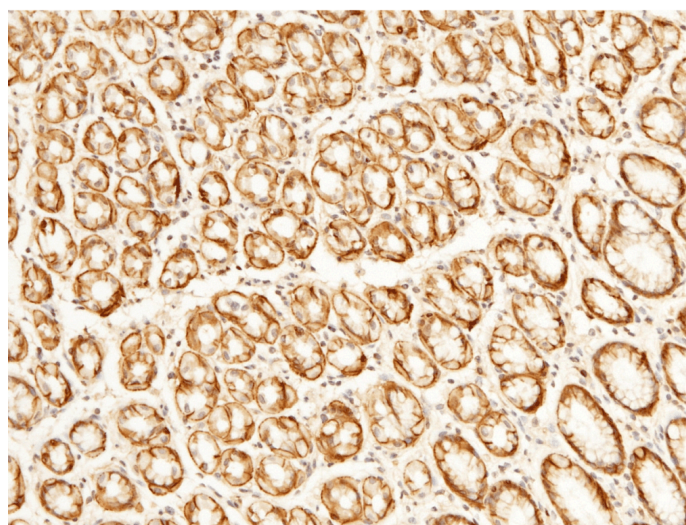
Analysis of anti-CD147 reactivity on HeLa cells.



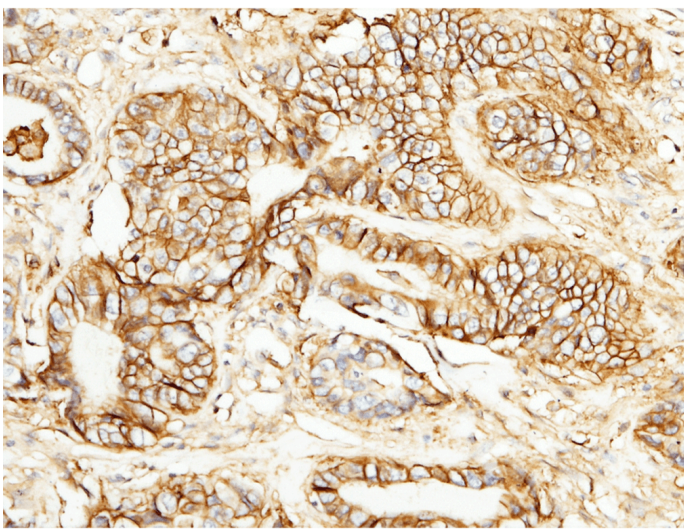
Immunofluorescence staining of human CD147 in HeLa cells with rabbit monoclonal antibody (1:200). The image showing membrane staining of HeLa cells.



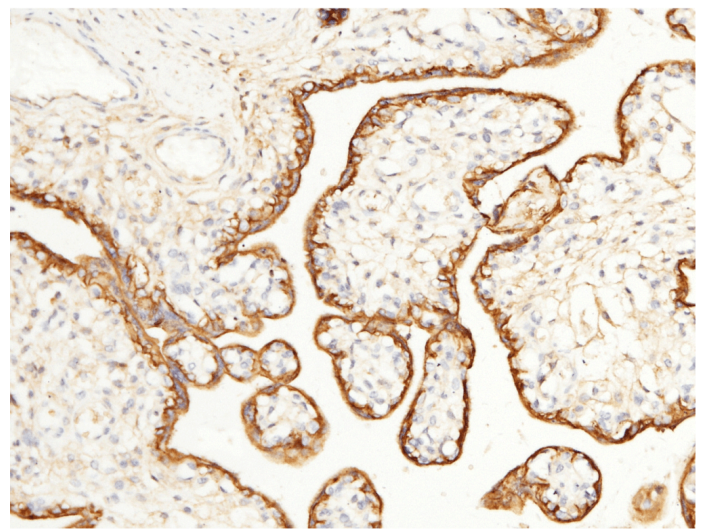
Immunofluorescence staining of CD147 in monkey stomach with rabbit monoclonal antibody (1:1000, frozen section). The image showing membrane staining of gastric gland cell. The right panel: merge with DAPI



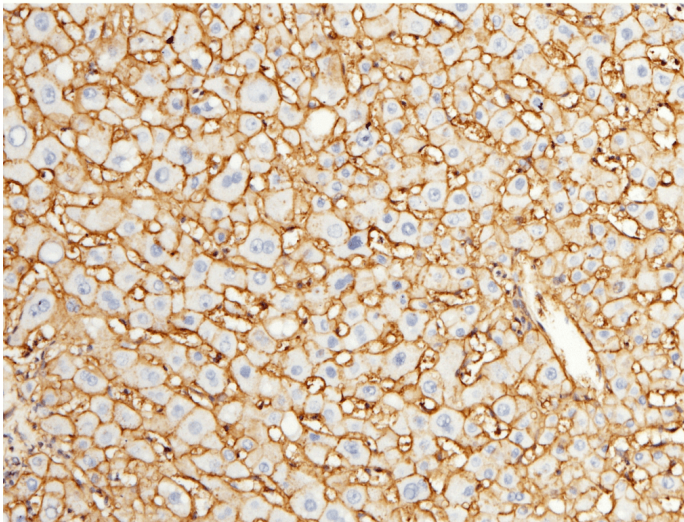
Immunochemical staining of human CD147 in human stomach with rabbit monoclonal antibody (1:5000, formalin-fixed paraffin embedded sections). The image showing membrane staining of epithelium cell.



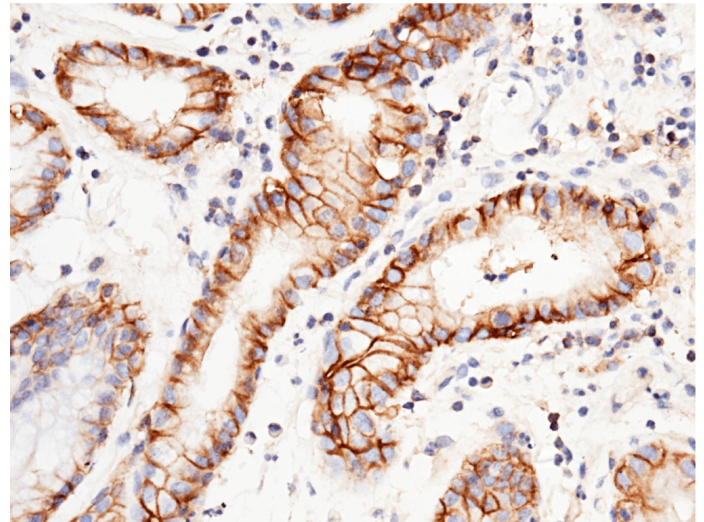
Immunochemical staining of human CD147 in human rectal cancer with rabbit monoclonal antibody (1:5000, formalin-fixed paraffin embedded sections). The image showing membrane staining of epithelium cell in intestinal gland.



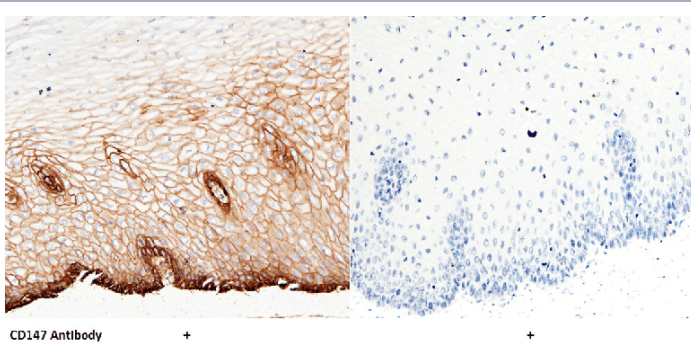
Immunochemical staining of human CD147 in human placenta with rabbit monoclonal antibody (1:5000, formalin-fixed paraffin embedded sections). The image showing positive staining of trophoblast.



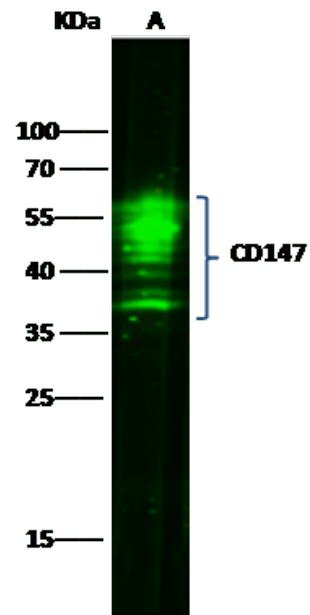
Immunochemical staining of human CD147 in human liver with rabbit monoclonal antibody (1:5000, formalin-fixed paraffin embedded sections). The image showing membrane staining of hepatocyte.



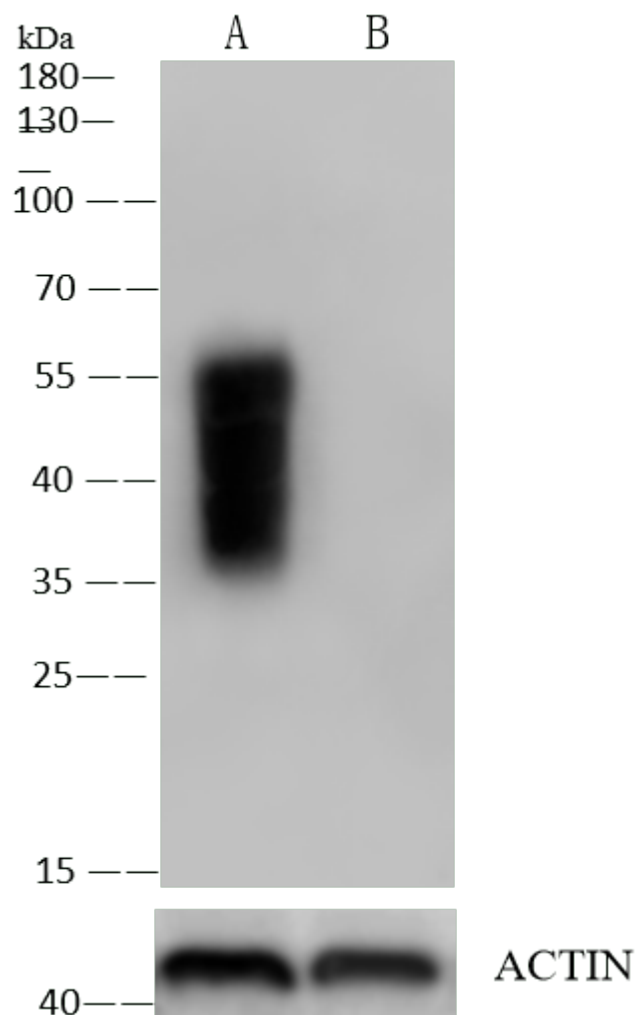
Immunochemical staining of human CD147 in human gastric cancer with rabbit monoclonal antibody (1:5000, formalin-fixed paraffin embedded sections). The image showing membrane staining of epithelium cell.



Immunohistochemical staining of human CD147 in human esophagus with rabbit monoclonal antibody (1:5000, formalin-fixed paraffin embedded sections). The image showing membrane staining of squamous epithelium cell. The left panel: tissue incubated with primary antibody; The right panel: tissue incubated with the mixture of primary antibody and antigen (recombinant protein).



Anti-CD147 rabbit monoclonal antibody at 1:500 dilution. Lane A: A431 Whole Cell Lysate. Lysates/proteins at 30 µg per lane. Secondary Goat Anti-Rabbit IgG H&L (Dylight800) at 1/10000 dilution. Developed using the Odyssey technique. Performed under reducing conditions. Observed band size:54 kDa.



Anti-CD147 rabbit monoclonal antibody at 1:500 dilution. Lane A: HeLa Whole Cell Lysate. Lane B: CD147 knockout HeLa Whole Cell Lysate: Lysates/proteins at 30 μ g per lane. Secondary Goat Anti-Rabbit IgG (H+L)/HRP at 1/10000 dilution. Developed using the ECL technique. Performed under reducing conditions. Observed band size:35-55 kDa (Validation Experiment)

Handling & Storage

Handling Protected from light. Avoid freeze-thaw cycles.

Long Term Storage -20°C

Shipping Blue Ice

Regulatory Status RUO - Research Use Only

Product Details

Alternative Name EMMPRIN, Basigin

Application ELISA, Flow Cytometry, ICC, IF, IHC (FS), IHC (PS), WB

Clone 125

Formulation Liquid. 0.2 µm filtered solution in PBS with 10% Trehalose, pH 7.0. Preservative free.

Host Rabbit

Immunogen Recombinant human CD147 protein.

Isotype IgG

Purity Detail Protein A purified.

Recommendation Dilutions/Conditions Western Blot (1:500-1:2'000)ELISA (1:5'000-1:10'000)Immunohistochemistry (paraffin sections) (1:2'500-1:10'000)Immunohistochemistry (frozen sections) (1:500-1:2'000)Immunocytochemistry (1:50-1:1'000)Flow Cytometry (1:25-1:100)Suggested dilutions/conditions may not be available for all applications.Optimal conditions must be determined individually for each application.

Species Reactivity Human

Worry-free Guarantee

This antibody is covered by our [Worry-Free Guarantee](#)



ENZO LIFE SCIENCES,
INC.
Phone: 800.942.0430
[info-
usa@enzolifesciences.com](mailto:info-usa@enzolifesciences.com)

European Sales Office
ENZO LIFE SCIENCES
(ELS) AG
Phone: +41 61 926 8989
[info-
eu@enzolifesciences.com](mailto:info-eu@enzolifesciences.com)

Belgium, The Netherlands
& Luxembourg
Phone: +32 3 466 0420
[info-
fr@enzolifesciences.com](mailto:info-fr@enzolifesciences.com)

France
Phone: +33 472 440 655
[info-
de@enzolifesciences.com](mailto:info-de@enzolifesciences.com)

Germany
Phone: +49 7621 5500 526
[info-
uk@enzolifesciences.com](mailto:info-uk@enzolifesciences.com)

UK & Ireland
Phone (UK customers):
0845 601 1488
Phone: +44 1392 825900
[info-
uk@enzolifesciences.com](mailto:info-uk@enzolifesciences.com)

Last modified: September 17, 2024

For local distributors and detailed product information visit us online: enzo.com All product names, logos, and brands are the property of their respective owners.