

CD146 recombinant monoclonal antibody (44)

CD146, also known as MCAM (Melanoma Cell Adhesion Molecule), is a cell adhesion molecule expressed on endothelial cells, smooth muscle cells, and certain tumor cells. It is involved in angiogenesis, metastasis, and cell signaling, making it a key marker in studies of cancer progression and vascular biology.

This antibody is covered by our [Worry-Free Guarantee](#).

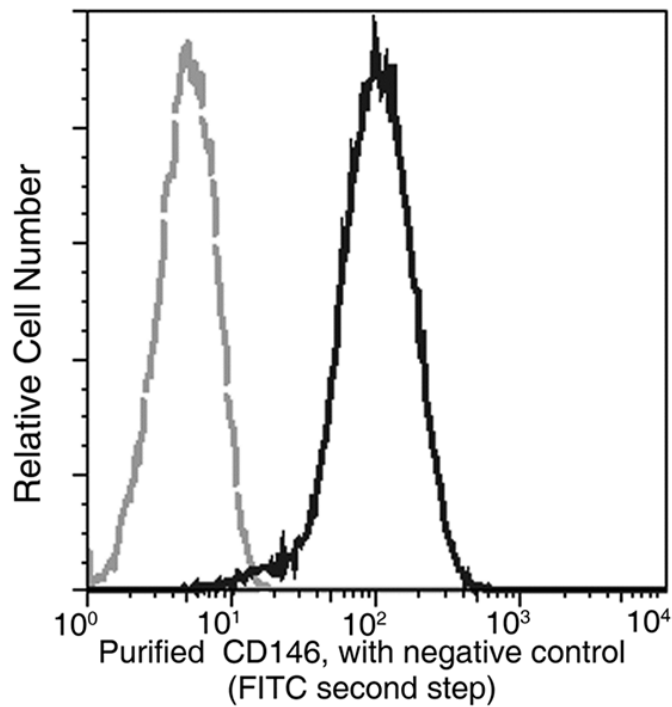
Ordering Information

[Order Online »](#)

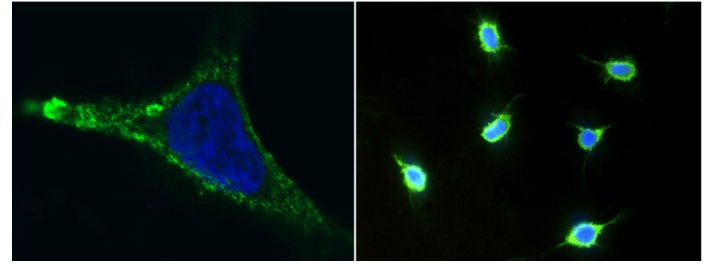
ENZ-ABS1037-0100	100µl
------------------	-------

Manuals, SDS & CofA

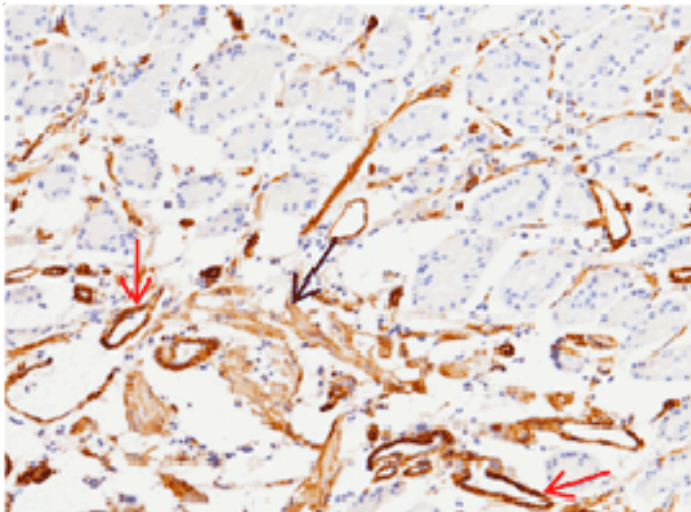
[View Online »](#)



Flow cytometric analysis of anti-CD146 on HeLa cells. HeLa cells were detached using 1X trypsin, washed, then stained with purified rabbit anti-CD146. Second step staining with goat anti-rabbit IgG FC polyclonal antibody.



Immunofluorescence staining of Human CD146 in HeLa cells. Cells were fixed with 4% PFA, blocked with 10% serum, and incubated with Rabbit anti-Human CD146 monoclonal antibody (1:100) at 4 °C overnight. Then cells were stained with the Alexa Fluor® 488-conjugated (left panel, captured by laser confocal scanning microscope; right panel, captured by fluorescence microscope) Goat Anti-rabbit IgG secondary antibody (green) and counterstained with DAPI (blue). Positive staining was localized to plasma membrane.



Immunohistochemical staining of formalin fixed, paraffin-embedded human stomach showing membrane staining of endothelial cells (red arrow), smooth muscle cells (black arrow) (1:200).

Handling & Storage

Handling	Avoid freeze-thaw cycles.
Long Term Storage	-20°C
Shipping	Blue Ice

Regulatory Status

RUO - Research Use Only

Product Details

Alternative Name	MCAM, Cell surface glycoprotein MUC18
Application	ELISA, Flow Cytometry, ICC, IF, IHC (PS)
Clone	44
Crossreactivity	No cross-reactivity in ELISA with human CD66a / CEACAM1, human CD166 / alcama, human CD106 / VCAM1, human CD226 / DNAM-1, human BCAM / CD239.
Formulation	Liquid. 0.2 µm filtered solution in PBS. Preservative free. Carrier-free.
Host	Rabbit
Immunogen	Recombinant human CD146 / MCAM extracellular domain.
Isotype	IgG
Purity Detail	Protein A purified.
Recommendation Dilutions/Conditions	ELISA (1:5'000-1:10'000)Immunohistochemistry (paraffin sections) (1:100-1:500)Immunocytochemistry / Immunofluorescence (1:50-1:1'000)Flow Cytometry (1:25-1:100)Suggested dilutions/conditions may not be available for all applications.Optimal conditions must be determined individually for each application.
Species Reactivity	Human

Worry-free Guarantee

This antibody is covered by our [Worry-Free Guarantee](#)

Last modified: October 7, 2024



ENZO LIFE SCIENCES,
INC.
Phone: 800.942.0430
[info-
usa@enzolifesciences.com](mailto:info-usa@enzolifesciences.com)

European Sales Office
ENZO LIFE SCIENCES
(ELS) AG
Phone: +41 61 926 8989
[info-
eu@enzolifesciences.com](mailto:info-eu@enzolifesciences.com)

Belgium, The Netherlands
& Luxembourg
Phone: +32 3 466 0420
[info-
be@enzolifesciences.com](mailto:info-be@enzolifesciences.com)

France
Phone: +33 472 440 655
[info-
fr@enzolifesciences.com](mailto:info-fr@enzolifesciences.com)

Germany
Phone: +49 7621 5500 526
[info-
de@enzolifesciences.com](mailto:info-de@enzolifesciences.com)

UK & Ireland
Phone (UK customers):
0845 601 1488
Phone: +44 1392 825900
[info-
uk@enzolifesciences.com](mailto:info-uk@enzolifesciences.com)