

# Cathepsin S (human), (recombinant)

Highly active

Cathepsin S, a member of the papain family of lysosomal cysteine proteases, functions in the immune system.

Citations: 7

[View Online »](#)

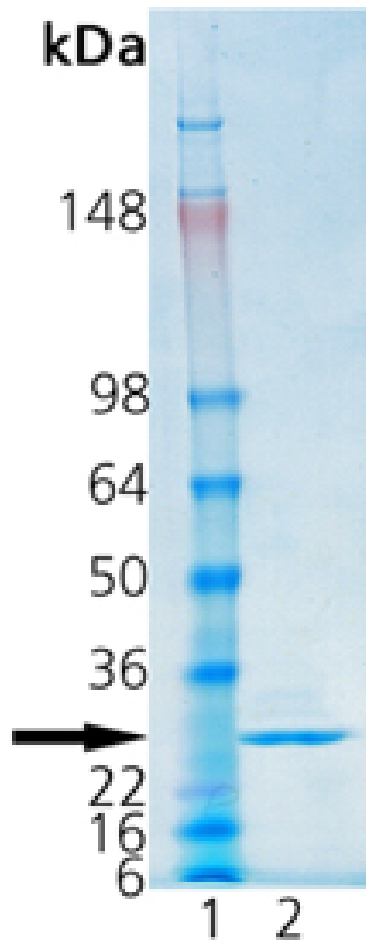
Ordering Information

[Order Online »](#)

BML-SE453-0010	10µg
----------------	------

Manuals, SDS & CofA

[View Online »](#)



**SDS-PAGE Analysis:** Lane 1: MW Marker, Lane 2: 0.5  $\mu\text{g}$  of Human Cathepsin S Protein

## Handling & Storage

Long Term Storage -80°C

Shipping Dry Ice

**Regulatory Status** RUO - Research Use Only

## Product Details

### Application Notes

Useful to study enzyme kinetics, cleave target substrates, and screen for inhibitors.

### Formulation

Liquid. In 100 mM MES, pH 6.5, containing 1 mM EDTA, 50 mM L-cysteine, 10 mM DTT, 0.5% Triton<sup>®</sup> X-100, 30% glycerol.

### MW

26 kDa

### Purity

≥95% (SDS-PAGE)

### Purity Detail

Purified by multi-step chromatography.

### Source

Produced in insect cells. Recombinant active cathepsin S cloned from human cDNA as full length proenzyme, auto-activated by incubation in pH 4.5 acetate buffer, and purified. Produced in a baculovirus expression system.

### Specific Activity

≥20 U/mg protein. One unit will hydrolyze one μmole Z-Val-Val-Arg-AMC substrate (Prod. No. BML-P199, 40 μM) per minute at 37°C.

### UniProt ID

P25774

Last modified: May 29, 2024



ENZO LIFE SCIENCES,  
INC.  
Phone: 800.942.0430  
[info-  
usa@enzolifesciences.com](mailto:info-usa@enzolifesciences.com)

European Sales Office  
ENZO LIFE SCIENCES  
(ELS) AG  
Phone: +41 61 926 8989  
[info-  
eu@enzolifesciences.com](mailto:info-eu@enzolifesciences.com)

Belgium, The Netherlands  
& Luxembourg  
Phone: +32 3 466 0420  
[info-  
be@enzolifesciences.com](mailto:info-be@enzolifesciences.com)

France  
Phone: +33 472 440 655  
[info-  
fr@enzolifesciences.com](mailto:info-fr@enzolifesciences.com)

Germany  
Phone: +49 7621 5500 526  
[info-  
de@enzolifesciences.com](mailto:info-de@enzolifesciences.com)

UK & Ireland  
Phone (UK customers):  
0845 601 1488  
Phone: +44 1392 825900  
[info-  
uk@enzolifesciences.com](mailto:info-uk@enzolifesciences.com)