

# Cathepsin D recombinant monoclonal antibody (003)

This monoclonal antibody detects Cathepsin D (CTSD), a lysosomal protease involved in protein degradation and apoptosis.

Cathepsin D is a key aspartic protease in the lysosome, critical for protein catabolism and cellular homeostasis. It has been implicated in neurodegenerative diseases and cancer progression.

This antibody is covered by our [Worry-Free Guarantee](#).

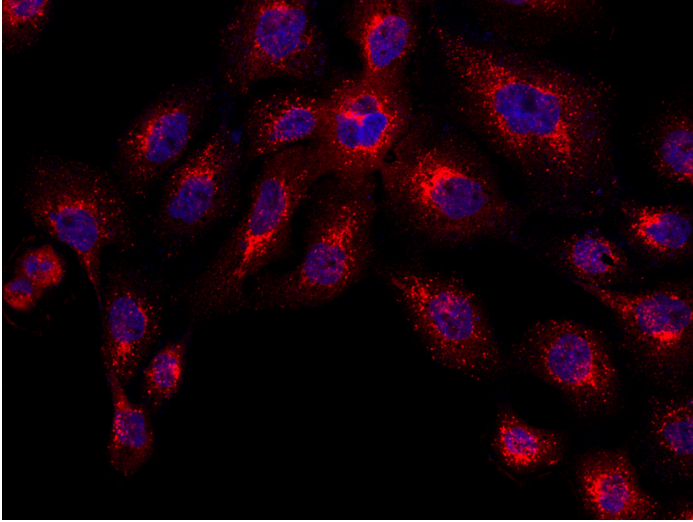
## Ordering Information

[Order Online »](#)

ENZ-ABS1069-0100	100µl
------------------	-------

## Manuals, SDS & CofA

[View Online »](#)



Immunofluorescence staining of cathepsin D in A431 cells. Cells were fixed with 4% PFA, permeabilized with 0.1% Triton X-100 in PBS, blocked with 10% serum, and incubated with cathepsin D recombinant monoclonal antibody (dilution ratio 1:60) at 4°C overnight. Then cells were stained with the Alexa Fluor®594-conjugated Goat Anti-rabbit IgG secondary antibody (red) and counterstained with DAPI (blue). Positive staining was localized to Cytoplasm.

## Handling & Storage

**Handling** Avoid freeze-thaw cycles.

**Long Term Storage** -20°C

**Shipping** Blue Ice

**Regulatory Status** RUO - Research Use Only

## Product Details

**Alternative Name** CTSD

**Application** ELISA, ICC, IF

**Clone** 003

**Formulation** Liquid. 0.2 µm filtered solution in PBS. Carrier-free.  
Preservative-free.

**Host** Rabbit

**Immunogen** Recombinant human Cathepsin D.

**Isotype** IgG

**Purity Detail** Protein A purified.

**Recommendation Dilutions/Conditions** Immunocytochemistry/Immuofluorescence (1:20-1:100)  
ELISA ( 1:5'000-1:10'000)

Suggested dilutions/conditions may not be available for all applications.

Optimal conditions must be determined individually for each application.

**Species Reactivity** Mouse

**Worry-free Guarantee**

This antibody is covered by our [Worry-Free Guarantee](#)



ENZO LIFE SCIENCES,  
INC.  
Phone: 800.942.0430  
[info-  
usa@enzolifesciences.com](mailto:info-usa@enzolifesciences.com)

European Sales Office  
ENZO LIFE SCIENCES  
(ELS) AG  
Phone: +41 61 926 8989  
[info-  
be@enzolifesciences.com](mailto:info-be@enzolifesciences.com)

Belgium, The Netherlands  
& Luxembourg  
Phone: +32 3 466 0420  
[info-  
fr@enzolifesciences.com](mailto:info-fr@enzolifesciences.com)

France  
Phone: +33 472 440 655  
[info-  
de@enzolifesciences.com](mailto:info-de@enzolifesciences.com)

Germany  
Phone: +49 7621 5500 526  
[info-  
uk@enzolifesciences.com](mailto:info-uk@enzolifesciences.com)

UK & Ireland  
Phone (UK customers):  
0845 601 1488  
Phone: +44 1392 825900  
[info-  
uk@enzolifesciences.com](mailto:info-uk@enzolifesciences.com)

**Last modified: March 28, 2025**

For local distributors and detailed product information visit us online: [enzo.com](http://enzo.com) All product names, logos, and brands are the property of their respective owners.