

Cannabinoid receptor

CB₁ polyclonal antibody

The cannabinoid receptors CB1 and CB2 are GPCRs named for their signaling function in response to cannabinoid drugs such as Delta9-tetrahydrocannabinol (Delta9-THC). In addition to Delta9-THC and its synthetic analogs, CB1 and CB2 receptors are bound by endogenous eicosanoid ligands (e.g. anandamide), and signal via Gi/o alpha subunits to regulate adenylyl cyclase activity (generally inhibitory), ion channel activation, intracellular Ca²⁺ levels, nitric oxide synthase activation, and immediate early gene expression. CB1 and CB2 signals in turn regulate neurological and immunological functions such as inhibition of neurotransmitter release and immune cell migration, antigen processing, and cytokine production.

This antibody is covered by our [Worry-Free Guarantee](#).

Citations: 2

[View Online »](#)

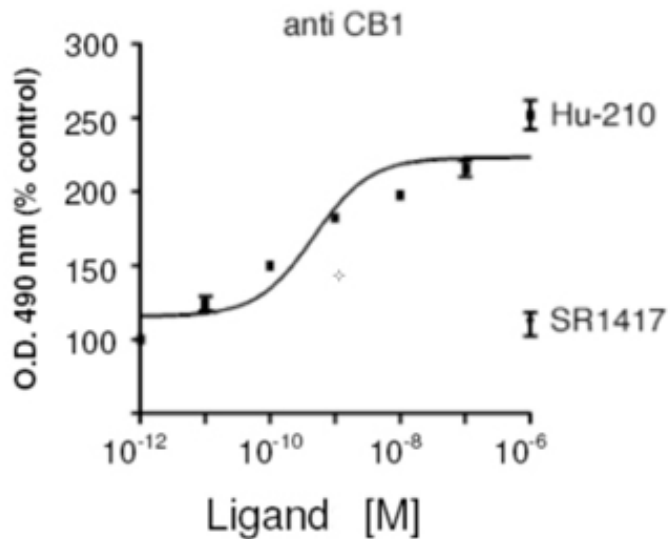
Ordering Information

[Order Online »](#)

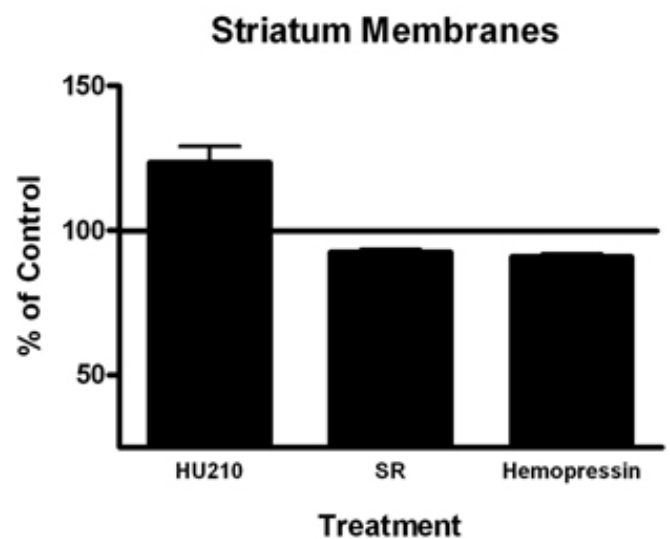
ADI-905-708-100	100µg
-----------------	-------

Manuals, SDS & CofA

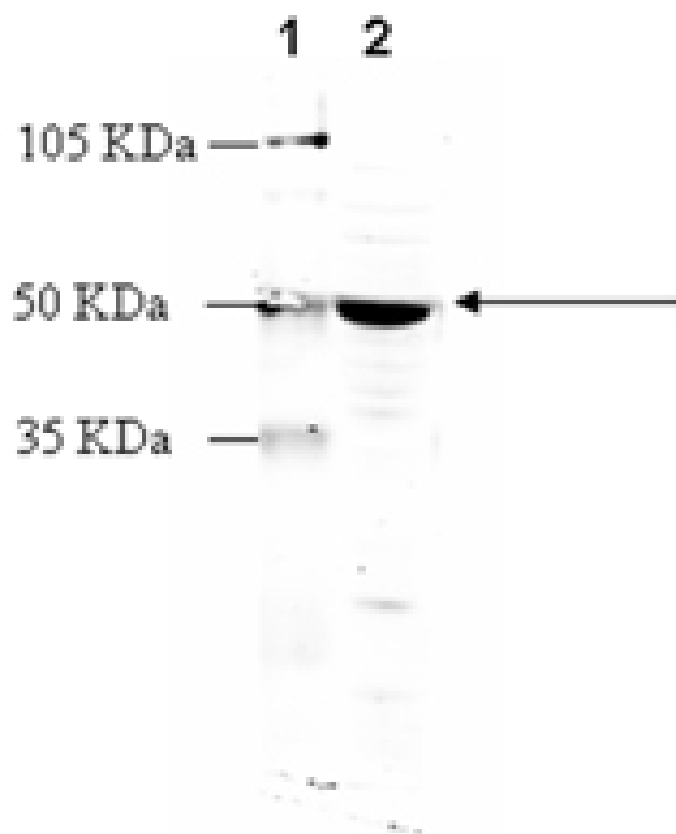
[View Online »](#)



Membrane ELISA: Membranes (5 μ g) from rat striatum were treated with indicated concentrations of agonists (HU-210) and inverse agonist (SR141716A) and probed with Cannabinoid Receptor (CB1) pAb by ELISA. Data from vehicle treated cells were taken as 100%. Results are the mean \pm SEM (n=3).



Membrane ELISA: Lewis rat striatum membranes (5 μ g/well) were treated with 1 μ M concentrations of agonist (HU210) and Inverse agonist (SR141716A/Hemopressin) and probed with Cannabinoid Receptor (CB1) pAb (1:1000 of a 1 μ g/ μ l stock solution) by ELISA. Data from vehicle treated cells were taken as 100%. Results are the mean \pm SEM (n=2).



Western blot analysis: MW Marker (1) and 10 μ g of rat brain membrane extract (2) probed with Cannabinoid Receptor (CB1) pAb at 2.8 μ g/ml.

Handling & Storage

Handling Keep on ice at all times.

Long Term Storage -20°C

Shipping Blue Ice

Regulatory Status RUO - Research Use Only

Product Details

Alternative Name CB1, CNR1, CBR

Application ELISA, IHC, WB

Application Notes Suitable for cell-based and membrane-based ELISA. Predicted MW of ~53kDa. Higher MW species may also be observed by Western blot which reflect post-translational modification of the receptor.

Crossreactivity Predicted species reactivity based on epitope sequence homology: gorilla, guinea pig, horse, dog, cat, platypus, Zebra Finch (bird).

Formulation Liquid. In PBS containing 50% glycerol and 0.01% sodium azide.

Host Rabbit

Immunogen Synthetic peptide corresponding to the sequence near the N-terminus of mouse cannabinoid receptor CB1.

Purity Detail Peptide affinity purified.

Species Reactivity Chicken, Human, Mouse, Rat

UniProt ID P47746

Worry-free Guarantee

This antibody is covered by our [Worry-Free Guarantee](#)



ENZO LIFE SCIENCES,
INC.
Phone: 800.942.0430
[info-
usa@enzolifesciences.com](mailto:info-usa@enzolifesciences.com)

European Sales Office
ENZO LIFE SCIENCES
(ELS) AG
Phone: +41 61 926 8989
[info-
eu@enzolifesciences.com](mailto:info-eu@enzolifesciences.com)

Belgium, The Netherlands
& Luxembourg
Phone: +32 3 466 0420
[info-
fr@enzolifesciences.com](mailto:info-fr@enzolifesciences.com)

France
Phone: +33 472 440 655
[info-
de@enzolifesciences.com](mailto:info-de@enzolifesciences.com)

Germany
Phone: +49 7621 5500 526
[info-
de@enzolifesciences.com](mailto:info-de@enzolifesciences.com)

UK & Ireland
Phone (UK customers):
0845 601 1488
Phone: +44 1392 825900
[info-
uk@enzolifesciences.com](mailto:info-uk@enzolifesciences.com)

Last modified: May 29, 2024

For local distributors and detailed product information visit us online: enzo.com All product names, logos, and brands are the property of their respective owners.