

cAMP ELISA kit

Most sensitive (0.027 pmol/ml) colorimetric kit for extracellular cAMP quantification.

This is a colorimetric competitive enzyme immunoassay kit for the quantitative determination of extracellular cAMP. Sensitivity is increased >10-fold by acetylation (reagents included). Absorbance is read at 405 nm. The ready-to-use liquid color-coded reagents provided reduce error.

Cyclic AMP (cAMP) is one of the most important “second messengers” involved as a modulator of physiological processes. A number of hormones are known to activate cAMP through the action of the enzyme Adenylate cyclase which converts ATP to cAMP. cAMP has been shown to be involved in the cardiovascular and nervous systems, immune mechanisms, cell growth and differentiation, and general metabolism.

Citations: 49

[View Online »](#)

Ordering Information

[Order Online »](#)

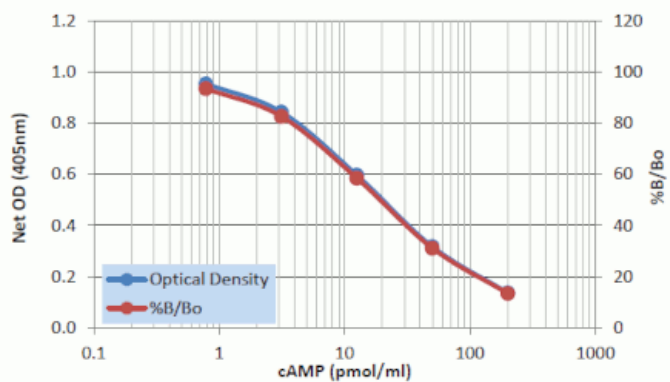
ADI-901-067A

5x96 wells

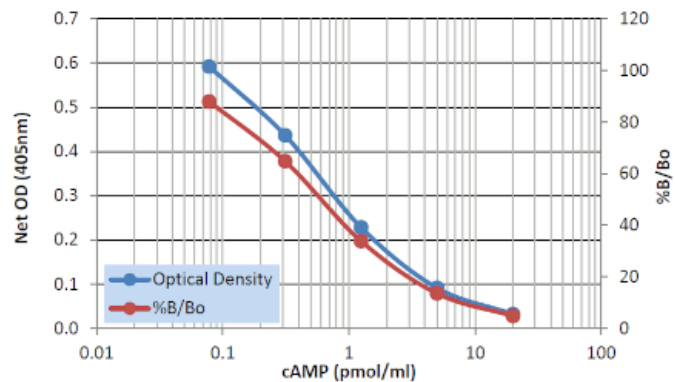
Manuals, SDS & CofA

[View Online »](#)

- Trusted – regularly cited in peer-reviewed publications
- Sensitive – optional acetylation protocol increases sensitivity >10-fold (0.027 pmol/ml)
- Rapid – results in just 3 hours from up to 39 samples in duplicate
- Easy-to-use – pre-coated plate and liquid color-coded reagents reduce errors
- Simple – efficient and well-established sample handling protocols
- Reliable – consistent lot-to-lot performance
- Save with bulk kit package!



Typical standard curve used to calculate cAMP concentrations for Non-Acetylated assay format.



Typical standard curve used to calculate cAMP concentrations for Acetylated assay format.

Handling & Storage

Use/Stability Store all components at 4°C, except standard and conjugate at -20°C.

Shipping Blue Ice

Regulatory Status

RUO - Research Use Only

Product Details

Alternative Name cyclic AMP

Application Colorimetric detection, ELISA

Application Notes For the quantitative determination of cAMP in culture supernatants, serum, and saliva from any species. Cited sample types include cell lysate, tissue and urine.

Assay Time 3 hours

Compatibility This product is compatible with the [Absorbance 96 Plate Reader](#).

Contents GxR Microtiter plate, Conjugate, Antibody, Assay buffer 2 concentrate, Wash buffer concentrate, Standard, pNpp Substrate, Stop solution, Acetic anhydride, Triethylamine

Crossreactivity cyclic AMP (100%)AMP, ATP, cyclic GMP, GMP, GTP, cyclic UMP, CTP (<0.001%)

Sensitivity Non-acetylated: 0.49 pmol/ml (range 0.78 – 200 pmol/ml)Acetylated: 0.027 pmol/ml (range 0.078 – 20 pmol/ml)

Species Reactivity Species independent

Wavelength 405 nm

Last modified: May 29, 2024



ENZO LIFE SCIENCES,
INC.
Phone: 800.942.0430
[info-
usa@enzolifesciences.com](mailto:info-usa@enzolifesciences.com)

European Sales Office
ENZO LIFE SCIENCES
(ELS) AG
Phone: +41 61 926 8989
[info-
eu@enzolifesciences.com](mailto:info-eu@enzolifesciences.com)

Belgium, The Netherlands
& Luxembourg
Phone: +32 3 466 0420
[info-
fr@enzolifesciences.com](mailto:info-fr@enzolifesciences.com)

France
Phone: +33 472 440 655
[info-
fr@enzolifesciences.com](mailto:info-fr@enzolifesciences.com)

Germany
Phone: +49 7621 5500 526
[info-
de@enzolifesciences.com](mailto:info-de@enzolifesciences.com)

UK & Ireland
Phone (UK customers):
0845 601 1488
Phone: +44 1392 825900
[info-
uk@enzolifesciences.com](mailto:info-uk@enzolifesciences.com)