

# cAMP complete ELISA kit

**Most sensitive (0.006 pmol/ml and 0.027 pmol/ml) and complete colorimetric kit for intra- and extracellular cAMP quantification.**

This is a colorimetric competitive immunoassay kit for the quantitative determination of extracellular cAMP diluted in buffer or intracellular cAMP in cells or tissues lysed in 0.1M HCl. 0.1M HCl is used to stop endogenous phosphodiesterase activity and stabilize the released cyclic AMP. The 0.1M HCl treated samples are then analyzed directly in a microtiter plate without extraction, drying and reconstitution. Sensitivity is increased >10-fold by acetylation (reagents included). Absorbance is read at 405 nm. The large signal-to-background ratio offers superior sensitivity compared to competitors. This kit lets you easily assess adenylyl cyclase activation by GPCRs.

Cyclic AMP (cAMP) is one of the most important “second messengers” involved as a modulator of physiological processes. A number of hormones are known to activate cAMP through the action of the enzyme Adenylate cyclase which converts ATP to cAMP. cAMP has been shown to be involved in the cardiovascular and nervous systems, immune mechanisms, cell growth and differentiation, and general metabolism.

Citations: 47

[View Online »](#)

## Ordering Information

[Order Online »](#)

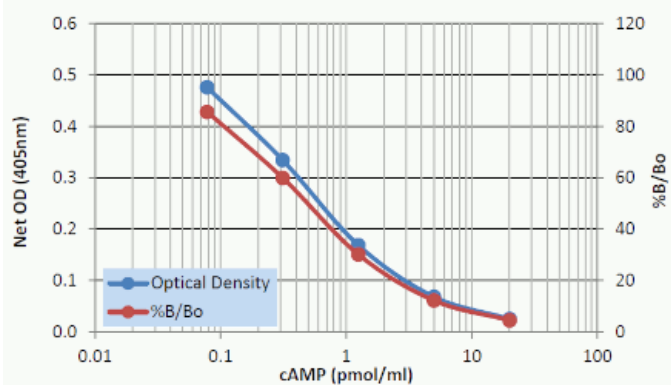
ADI-901-163A

5x96 wells

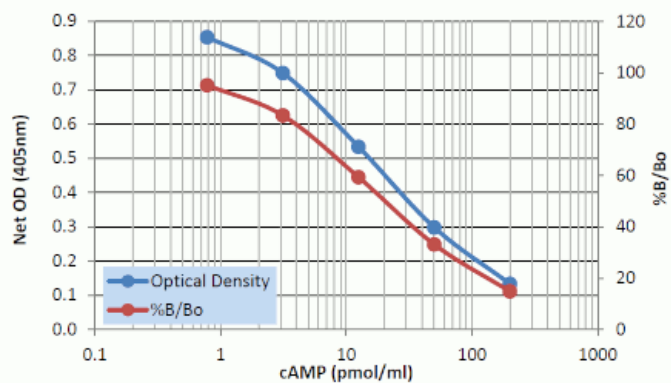
## Manuals, SDS & CofA

[View Online »](#)

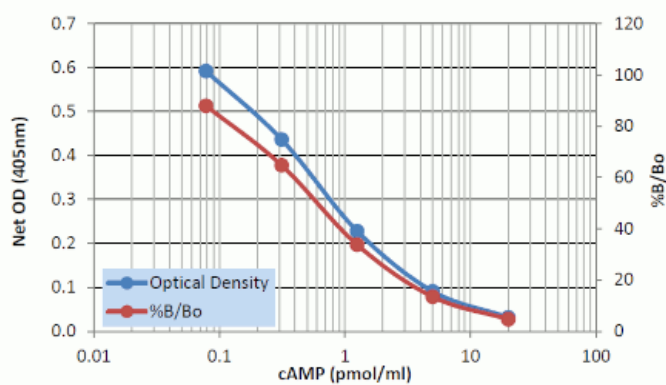
- Versatile and convenient kit used to assay both intracellular and extracellular cAMP
- Highly sensitive measurement of cAMP with an optional acetylation protocol increasing sensitivity >10-fold (0.006 pmol/ml and 0.027 pmol/ml) for intra- and extracellular cAMP, respectively
- Simple, efficient and well-established sample handling protocols
- Widely cited in peer-reviewed publications
- Higher throughput format with results in 3 hours for up to 39 samples in duplicate
- Reliable and consistent lot-to-lot performance
- Save with bulk kit package!



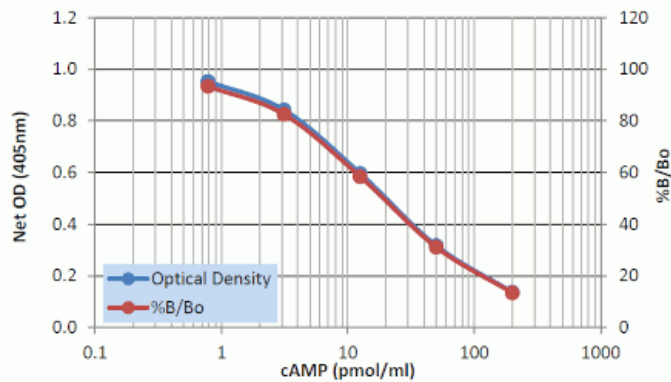
Typical standard curve used to calculate cAMP concentrations in 0.1M HCl for Acetylated assay format.



Typical standard curve used to calculate cAMP concentrations in 0.1M HCl for Non-acetylated assay format.



Typical standard curve used to calculate cAMP concentrations in Assay Buffer 2 for Acetylated assay format.



Typical standard curve used to calculate cAMP concentrations in Assay Buffer 2 for Non-acetylated assay format.

## Handling & Storage

**Use/Stability** Store all components at +4°C, except standard and conjugate at -20°C.

**Shipping** Blue Ice

**Regulatory Status** RUO - Research Use Only

## Product Details

**Alternative Name** cyclic AMP

**Application** Colorimetric detection, ELISA

**Application Notes** For the quantitative determination of cAMP in cell lysates, culture supernatants, serum, saliva, and tissue from any species.

**Assay Time** 3 hours

**Compatibility** This product is compatible with the [Absorbance 96 Plate Reader](#).

**Contents** GxR Microtiter plate, Conjugate, Antibody, Assay buffer 2 concentrate, 0.1 M HCl, Neutralizing reagent, Wash buffer concentrate, Standard, pNpp Substrate, Stop solution, Acetic anhydride, Triethylamine

**Crossreactivity** cyclic AMP (100%)AMP, ATP, cyclic GMP, GMP, GTP, cyclic UMP, CTP (<0.001%)

**Sensitivity** Non-acetylated: 0.49 pmol/ml (assay buffer) / 1.18 pmol/ml (HCl) (range (non-acetylated) 0.78 – 200 pmol/ml)Acetylated: 0.027 pmol/ml (assay buffer) / 0.006 pmol/ml (HCl) (range (acetylated) 0.078 – 20 pmol/ml)

**Species Reactivity** Species independent

**Wavelength** 405 nm



ENZO LIFE SCIENCES,  
INC.  
Phone: 800.942.0430  
[info-  
usa@enzolifesciences.com](mailto:info-usa@enzolifesciences.com)

European Sales Office  
ENZO LIFE SCIENCES  
(ELS) AG  
Phone: +41 61 926 8989  
[info-  
eu@enzolifesciences.com](mailto:info-eu@enzolifesciences.com)

Belgium, The Netherlands  
& Luxembourg  
Phone: +32 3 466 0420  
[info-  
be@enzolifesciences.com](mailto:info-be@enzolifesciences.com)

France  
Phone: +33 472 440 655  
[info-  
fr@enzolifesciences.com](mailto:info-fr@enzolifesciences.com)

Germany  
Phone: +49 7621 5500 526  
[info-  
de@enzolifesciences.com](mailto:info-de@enzolifesciences.com)

UK & Ireland  
Phone (UK customers):  
0845 601 1488  
Phone: +44 1392 825900  
[info-  
uk@enzolifesciences.com](mailto:info-uk@enzolifesciences.com)