

# Calreticulin polyclonal antibody

Calreticulin (CRT) is a multifunctional, multi-compartmental protein most abundant in the ER lumen. CRT contains the ER-retrieval sequence, KDEL, and has been best characterized as a soluble molecular chaperone of new or misfolded proteins and a Ca<sup>2+</sup>- binding protein. Both CRT and its membrane bound homolog, Calnexin (CNX) interact with proteins and glycoproteins that have monoglucosylated N-glycans. The CRT/CNX cycle promotes correct folding, inhibits aggregation of folding intermediates, blocks premature oligomerization, regulates ER degradation, and provides quality control by preventing incompletely folded glycoproteins from exiting to the Golgi complex.

This antibody is covered by our [Worry-Free Guarantee](#).

Citations: 36

[View Online »](#)

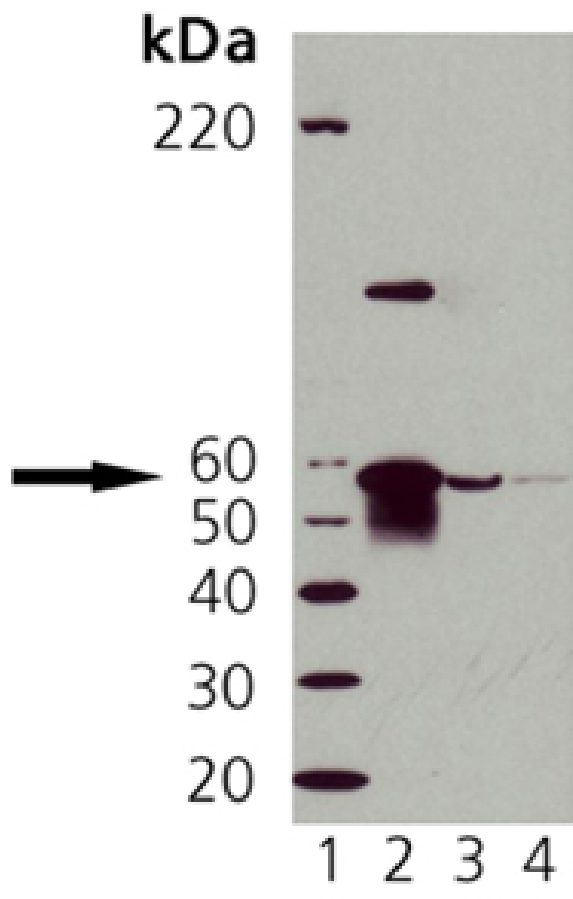
## Ordering Information

[Order Online »](#)

ADI-SPA-600-D	50µg
---------------	------

## Manuals, SDS & CofA

[View Online »](#)



Western Blot Analysis of Calreticulin: Lane 1: MWM,  
Lane 2: HeLa cell lysate, Lane 3: PC-12 cell lysate.  
Lane 4: 3T3 cell lysate

## Handling & Storage

**Handling** Avoid freeze/thaw cycles.

**Long Term Storage** -20°C

**Shipping** Blue Ice

**Regulatory Status** RUO - Research Use Only

## Product Details

**Alternative Name** CALR, CRT

**Application** ICC, IHC, IP, WB

**Application Notes** Predicted MW of ~63kDa.

**Formulation** Liquid. In PBS containing 50% glycerol and 0.09% sodium azide.

**GenBank ID** AD000092

**Host** Rabbit

**Immunogen** Synthetic peptide corresponding to the sequence near the C-terminus of human Calreticulin.

**Purity Detail** Protein A affinity purified.

**Recommendation Dilutions/Conditions** Western Blot (1:1,000, human; 1:500, mouse; ECL) Suggested dilutions/conditions may not be available for all applications. Optimal conditions must be determined individually for each application.

**Source** Purified from rabbit serum.

**Species Reactivity** Bovine, Dog, Human, Mouse, Rat

**UniProt ID** P27797

**Worry-free Guarantee** This antibody is covered by our [Worry-Free Guarantee](#)

Last modified: May 29, 2024



ENZO LIFE SCIENCES,  
INC.  
Phone: 800.942.0430  
[info-  
usa@enzolifesciences.com](mailto:info-usa@enzolifesciences.com)

European Sales Office  
ENZO LIFE SCIENCES  
(ELS) AG  
Phone: +41 61 926 8989  
[info-  
eu@enzolifesciences.com](mailto:info-eu@enzolifesciences.com)

Belgium, The Netherlands  
& Luxembourg  
Phone: +32 3 466 0420  
[info-  
be@enzolifesciences.com](mailto:info-be@enzolifesciences.com)

France  
Phone: +33 472 440 655  
[info-  
fr@enzolifesciences.com](mailto:info-fr@enzolifesciences.com)

Germany  
Phone: +49 7621 5500 526  
[info-  
de@enzolifesciences.com](mailto:info-de@enzolifesciences.com)

UK & Ireland  
Phone (UK customers):  
0845 601 1488  
Phone: +44 1392 825900  
[info-  
uk@enzolifesciences.com](mailto:info-uk@enzolifesciences.com)