

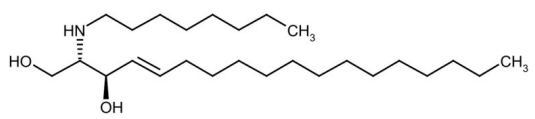
# C8 ceramine, D-erythro

Ceramide-activated protein kinase activator

C<sub>8</sub> ceramine is an analog of ceramide in which the amide is substituted with an amine. This substitution renders it inert to ceramidases. It is highly effective at induction of apoptosis in U937 cells. Ceramine induces peak DNA fragmentation in 6 hrs compared to 18 hrs for C<sub>8</sub> ceramide.

**Manuals, SDS & CofA**

[View Online »](#)



## Handling & Storage

<b>Use/Stability</b>	As indicated on product label or CoA when stored as recommended. Store, as supplied, at -20°C for up to 1 year. Store solutions at -20°C for up to 3 months.
<b>Long Term Storage</b>	-20°C
<b>Shipping</b>	Ambient Temperature

## Regulatory Status

RUO - Research Use Only

## Product Details

<b>Appearance</b>	White solid.
<b>CAS</b>	170926-06-4
<b>Couple Target</b>	Ceramide-activated protein kinase
<b>Couple Type</b>	Activator
<b>Formula</b>	$C_{26}H_{53}NO_2$
<b>MW</b>	411.7
<b>Purity</b>	≥98% (TLC)
<b>Solubility</b>	Soluble in ethanol (25 mg/ml) or DMSO (25 mg/ml).

Last modified: May 29, 2024



ENZO LIFE SCIENCES,  
INC.  
Phone: 800.942.0430  
[info-usa@enzolifesciences.com](mailto:info-usa@enzolifesciences.com)

European Sales Office  
ENZO LIFE SCIENCES  
(ELS) AG  
Phone: +41 61 926 8989  
[info-eu@enzolifesciences.com](mailto:info-eu@enzolifesciences.com)

Belgium, The Netherlands  
& Luxembourg  
Phone: +32 3 466 0420  
[info-be@enzolifesciences.com](mailto:info-be@enzolifesciences.com)

France  
Phone: +33 472 440 655  
[info-fr@enzolifesciences.com](mailto:info-fr@enzolifesciences.com)

Germany  
Phone: +49 7621 5500 526  
[info-de@enzolifesciences.com](mailto:info-de@enzolifesciences.com)

UK & Ireland  
Phone (UK customers):  
0845 601 1488  
Phone: +44 1392 825900  
[info-uk@enzolifesciences.com](mailto:info-uk@enzolifesciences.com)