

C8 Ceramide

Ceramide-activated protein kinase activator

A biologically active, cell-permeable, but nonphysiologic ceramide analog. It induces phosphorylation of epidermal growth factor receptor on Thr-669 in A-431 cells by stimulation of ceramide-activated protein kinase and induces apoptosis.

Citations: 4

[View Online »](#)

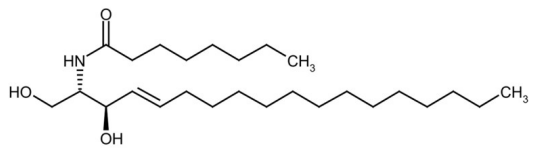
Ordering Information

[Order Online »](#)

BML-SL112-0005	5mg
----------------	-----

Manuals, SDS & CofA

[View Online »](#)



Handling & Storage

Use/Stability	As indicated on product label or CoA when stored as recommended. Store, as supplied, at -20°C for up to 1 year. Store solutions at -20°C for up to 3 months.
Long Term Storage	-20°C
Shipping	Ambient Temperature

Regulatory Status

RUO - Research Use Only

Product Details

Appearance	White waxy solid.
CAS	74713-59-0
Couple Target	Ceramide-activated protein kinase
Couple Type	Activator
Formula	$C_{26}H_{51}NO_3$
MW	425.7
Purity	≥98% (TLC)
Solubility	Soluble in DMSO (25mg/ml) or 100% ethanol (25mg/ml).

Last modified: May 29, 2024



ENZO LIFE SCIENCES,
INC.
Phone: 800.942.0430
info-usa@enzolifesciences.com

European Sales Office
ENZO LIFE SCIENCES
(ELS) AG
Phone: +41 61 926 8989
info-eu@enzolifesciences.com

Belgium, The Netherlands
& Luxembourg
Phone: +32 3 466 0420
info-be@enzolifesciences.com

France
Phone: +33 472 440 655
info-fr@enzolifesciences.com

Germany
Phone: +49 7621 5500 526
info-de@enzolifesciences.com

UK & Ireland
Phone (UK customers):
0845 601 1488
Phone: +44 1392 825900
info-uk@enzolifesciences.com