

C16 Ceramide

Endogenous ceramide

An abundant molecular species of endogenous ceramide. It induces phosphorylation of epidermal growth factor receptor on Thr⁶⁶⁹ in A-431 cells by stimulation of ceramide-activated protein kinase and activates NF- κ B at concentrations as low as 50 nM. Activates PKC ζ .

Citations: 6

[View Online »](#)

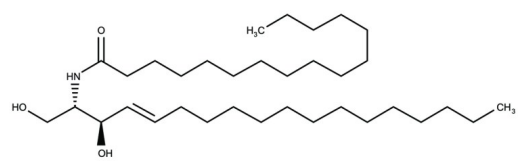
Ordering Information

[Order Online »](#)

| | |
|----------------|------|
| BML-SL115-0025 | 25mg |
|----------------|------|

Manuals, SDS & CofA

[View Online »](#)



Handling & Storage

| | |
|--------------------------|---|
| Use/Stability | As indicated on product label or CoA when stored as recommended. Stable for at least 1 year after receipt when stored, as supplied, at -20°C. Stock solutions are stable for up to 3 months at -20°C. |
| Long Term Storage | -20°C |
| Shipping | Ambient Temperature |

Regulatory Status

RUO - Research Use Only

Product Details

| | |
|-------------------------|---|
| Alternative Name | N-Palmitoyl-D-erythro-sphingosine, N-Hexadecanoyl-D-erythro-sphingosine, N-Palmitoyl ceramide |
| Appearance | Solid. |
| CAS | 24696-26-2 |
| Couple Target | Ceramide-activated protein kinase, NF-kappaB, PKC |
| Couple Type | Activator |
| Formula | $C_{34}H_{67}NO_3$ |
| MW | 537.9 |
| Purity | ≥98% (TLC) |
| Solubility | Soluble in 100% ethanol (5mg/ml warm). |



ENZO LIFE SCIENCES,
INC.
Phone: 800.942.0430
info-usa@enzolifesciences.com

European Sales Office
ENZO LIFE SCIENCES
(ELS) AG
Phone: +41 61 926 8989
info-eu@enzolifesciences.com

Belgium, The Netherlands
& Luxembourg
Phone: +32 3 466 0420
info-be@enzolifesciences.com

France
Phone: +33 472 440 655
info-fr@enzolifesciences.com

Germany
Phone: +49 7621 5500 526
info-de@enzolifesciences.com

UK & Ireland
Phone (UK customers):
0845 601 1488
Phone: +44 1392 825900
info-uk@enzolifesciences.com