

# Busulfan

## DNA alkylating agent

Antineoplastic bifunctional, DNA alkylating agent that causes DNA damage by cross-linking DNA and proteins. Causes double-base lesions mainly at 5'-GA-3' and, to a lesser extent, at 5'-GG-3' sequences. Forms an intrastrand cross-link at the 5'-GA-3' sequence, in addition to monoalkylation. Selectively induces normal human fibroblast senescence through Erk and p38 pathways.

Citations: 4

[View Online »](#)

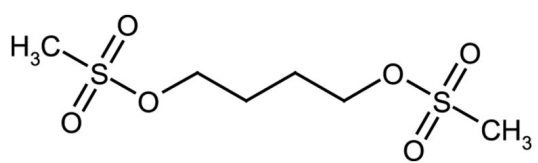
## Ordering Information

[Order Online »](#)

ALX-400-048-G010	10g
------------------	-----

## Manuals, SDS & CofA

[View Online »](#)



## Handling & Storage

**Use/Stability** As indicated on product label or CoA when stored as recommended.

**Long Term Storage** -20°C

**Shipping** Ambient Temperature

**Regulatory Status** RUO - Research Use Only

## Product Details

**Alternative Name** 1,4-Butanediol dimethanesulfonate

**Appearance** White to off-white crystalline powder.

**CAS** 55-98-1

**Formula**  $C_6H_{14}O_6S_2$

**Identity** Determined by NRM and LCMS.

**MI** **14:** 1505

**MW** 246.3

**Purity** ≥98% (Assay)

**RTECS** EK1750000

**Solubility** Soluble in acetone, 100% ethanol or DMSO; insoluble in water.

**Source** Synthetic.

**Last modified: May 29, 2024**



ENZO LIFE SCIENCES,  
INC.  
Phone: 800.942.0430  
[info-  
usa@enzolifesciences.com](mailto:info-usa@enzolifesciences.com)

European Sales Office  
ENZO LIFE SCIENCES  
(ELS) AG  
Phone: +41 61 926 8989  
[info-  
eu@enzolifesciences.com](mailto:info-eu@enzolifesciences.com)

Belgium, The Netherlands  
& Luxembourg  
Phone: +32 3 466 0420  
[info-  
fr@enzolifesciences.com](mailto:info-fr@enzolifesciences.com)

France  
Phone: +33 472 440 655  
[info-  
fr@enzolifesciences.com](mailto:info-fr@enzolifesciences.com)

Germany  
Phone: +49 7621 5500 526  
[info-  
de@enzolifesciences.com](mailto:info-de@enzolifesciences.com)

UK & Ireland  
Phone (UK customers):  
0845 601 1488  
Phone: +44 1392 825900  
[info-  
uk@enzolifesciences.com](mailto:info-uk@enzolifesciences.com)