

# Bnip3L (IN) polyclonal antibody

Bnip3L/Bnip3alpha/Nix is a homolog of the E1B 19K/Bcl-2 binding and pro-apoptotic protein Bnip3. Overexpression of Bnip3L induces apoptosis. In particular, Bnip3L interacts with and overcomes the suppression of apoptosis mediated by Bcl-2 and Bcl-xL.

This antibody is covered by our [Worry-Free Guarantee](#).

Citations: 3

[View Online »](#)

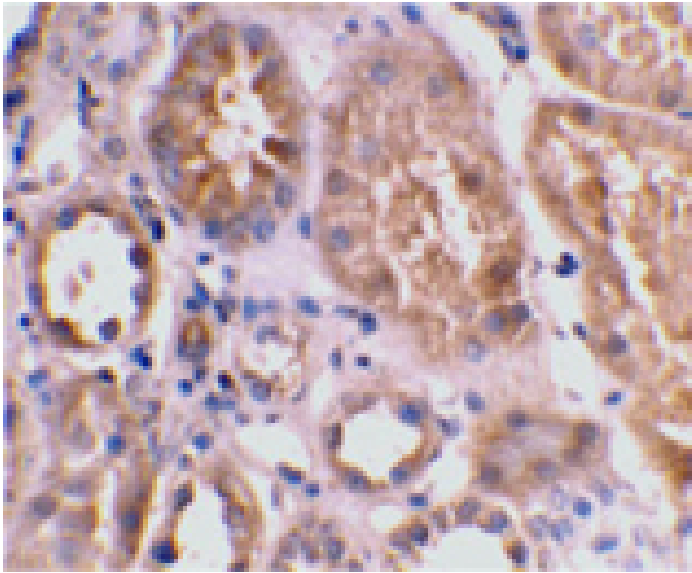
Ordering Information

[Order Online »](#)

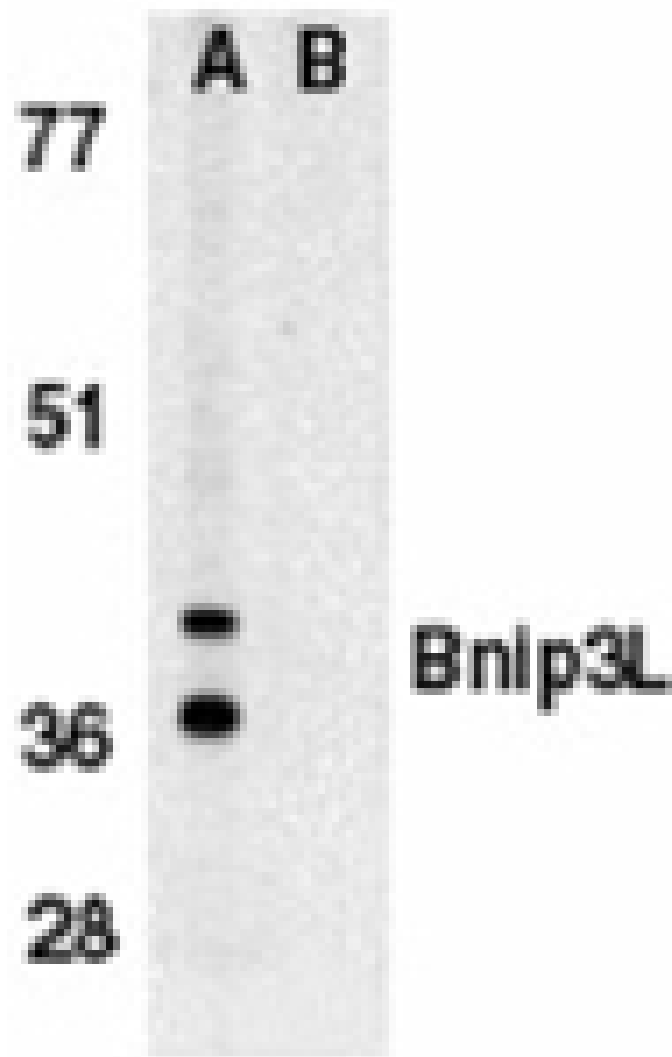
ADI-905-185-100	100µg
-----------------	-------

Manuals, SDS & CofA

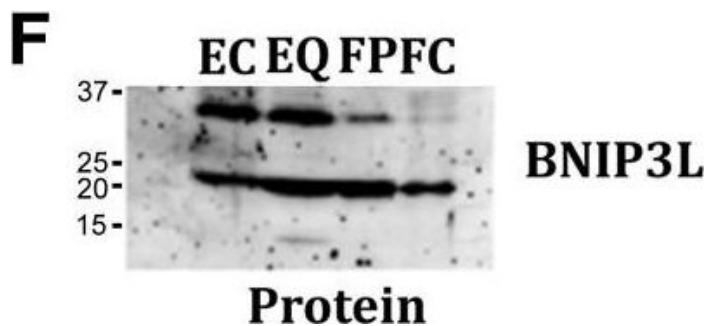
[View Online »](#)



Immunohistochemistry analysis of human kidney tissue using Bnip3L antibody at 2µg/ml.



Western blot analysis of Bnip3L in K562 whole cell lysate in the absence (A), or presence (B) of immunogenic peptide with Bnip3L antibody (IN) at 1µg/ml.



Select mitochondrial regulation, mitophagy, and macroautophagy regulatory protein comparison with transcript levels by western blot and immunofluorescent analysis. Protein levels determined by western analysis were compared with respective transcript levels for mitochondrial fusion transcripts encoding proteins mitofusin-1 and mitofusin-2 (MFN-1, -2) (A, B); mitophagy transcripts encoding proteins Parkin E3 ubiquitin ligase (PARK2/Parkin) (C, D) and BCL2/adenovirus E1B 19kDa interacting protein 3-like (BNIP3L/NIX) (E, F); and macroautophagy regulation transcripts encoding proteins (G, H) beclin 1, autophagy related (BECN1), RB1-inducible coiled-coil 1 (RB1CC1), FYVE and coiled-coil domain containing 1 (FYCO1), mechanistic target of rapamycin (serine/threonine kinase) (mTOR), RAB9A, member RAS oncogene family (RAB9A), GABA(A) receptor-associated protein-like 2 (GABARAPL2). Cryosections from embryonic E10, E13, and E15 chicken lenses were immunostained for MFN2 (I, Red) or GABARAPL2/GATE16 (J, red) (nuclei, blue) and analyzed by confocal microscopy. Scale bars: 20  $\mu$ m.

Image collected and cropped by CiteAb under a CC-BY license from the following publication: Differentiation state-specific mitochondrial dynamic regulatory networks are revealed by global transcriptional analysis of the developing chicken lens. *G3 (Bethesda)* (2014)

## Handling & Storage

Long Term Storage -20°C

Shipping Blue Ice

## Regulatory Status RUO - Research Use Only

## Product Details

Alternative Name	BCL2/adenovirus E1B 19kDa interacting protein 3-like, NIX
Application	IHC, WB
Application Notes	Detects a band of ~40kDa by Western blot.
Formulation	Liquid. In PBS containing 0.02% sodium azide.
Host	Rabbit
Immunogen	Synthetic peptide corresponding to aa 77-92 of human Bnip3L.
Purity Detail	Peptide affinity purified.
Recommendation Dilutions/Conditions	Immunohistochemistry (2µg/ml)Western Blot (0.5-1.0µg/ml)Suggested dilutions/conditions may not be available for all applications.Optimal conditions must be determined individually for each application.
Species Reactivity	Human
UniProt ID	O60238
Worry-free Guarantee	This antibody is covered by our <a href="#">Worry-Free Guarantee</a>

Last modified: May 29, 2024



ENZO LIFE SCIENCES,  
INC.  
Phone: 800.942.0430  
[info-  
usa@enzolifesciences.com](mailto:info-usa@enzolifesciences.com)

European Sales Office  
ENZO LIFE SCIENCES  
(ELS) AG  
Phone: +41 61 926 8989  
[info-  
eu@enzolifesciences.com](mailto:info-eu@enzolifesciences.com)

Belgium, The Netherlands  
& Luxembourg  
(ELS) AG  
Phone: +32 3 466 0420  
[info-  
fr@enzolifesciences.com](mailto:info-fr@enzolifesciences.com)

France  
Phone: +33 472 440 655  
[info-  
fr@enzolifesciences.com](mailto:info-fr@enzolifesciences.com)

Germany  
Phone: +49 7621 5500 526  
[info-  
de@enzolifesciences.com](mailto:info-de@enzolifesciences.com)

UK & Ireland  
Phone (UK customers):  
0845 601 1488  
Phone: +44 1392 825900  
[info-  
uk@enzolifesciences.com](mailto:info-uk@enzolifesciences.com)