

Bim_{S/EL/L} monoclonal antibody (3C5)

This antibody is covered by our [Worry-Free Guarantee](#).

Citations: 20

[View Online »](#)

Ordering Information

[Order Online »](#)

| | |
|------------------|-------|
| ALX-804-527-C100 | 100µg |
|------------------|-------|

Manuals, SDS & CofA

[View Online »](#)

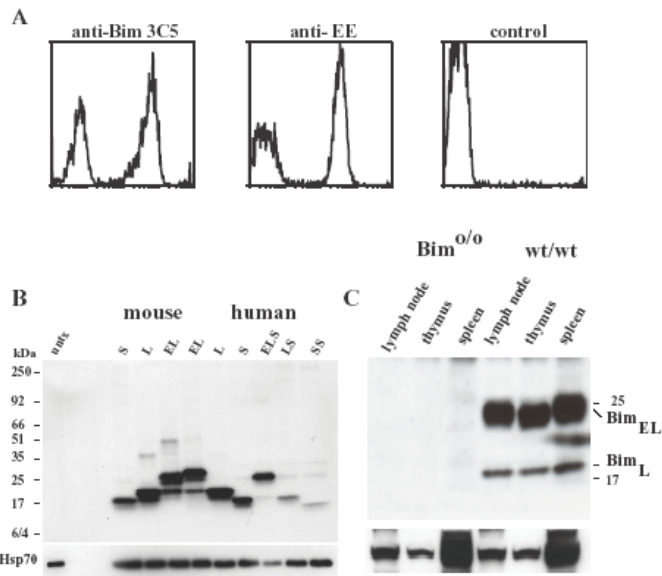


Figure A: Hybridomas producing MABs to Bim (peptide) were identified using clones of the IL-3-dependent mouse myeloid cell line FDC-P1 stably expressing Bcl-2 alone, or Bcl-2 plus mouse BimL mixed at a 1:1 ratio. Transfected cells were fixed, permeabilized and stained with the rat anti-Bim MAb (clone 3C5) (Prod. No. ALX-804-527), the mouse anti-Glu-Glu (EE) MAb (positive control) or with secondary antibody alone (negative control). Staining was visualised by FITC-conjugated goat anti-rat or anti-mouse IgG antibodies. **Figure B:** Western blotting with anti-Bim MAb (clone 3C5) (Prod. No. ALX-804-527) recognizes all known isoforms of Bim. Western blotting of lysates of 293T cells transfected with EE-tagged forms of mouse or HA tagged forms of human Bim. Blots were probed with anti-Bim MAb (clone 3C5) (Prod. No. ALX-804-527), which detected EE mouse BimS, BimL, BimEL and EE human, BimSS, BimS, BimLS, BimL, BimELS, BimEL. Probing with an anti-Hsp-70 MAb was used as a loading control for all blots. **Figure C:** Anti-Bim MAb (clone 3C5) (Prod. No. ALX-804-527) detects endogenous Bim expression in mouse tissues but not those from Bim knockout mice. Bim protein was revealed in lysates from mouse tissues (5×10^6 /lane) by Western blotting with anti-Bim MAb (clone 3C5) (Prod. No. ALX-804-527) and detection by ECL. Probing with an anti-Hsp-70 MAb was used as a loading control.

Handling & Storage

| | |
|--------------------|---------------------------|
| Handling | Avoid freeze/thaw cycles. |
| Short Term Storage | +4°C |
| Long Term Storage | -20°C |
| Shipping | Blue Ice |

Regulatory Status

RUO - Research Use Only

Product Details

| | |
|-------------------------------------|---|
| Alternative Name | BCL2L11 |
| Application | ELISA, Flow Cytometry, ICC, IP, WB |
| Clone | 3C5 |
| Formulation | Liquid. In PBS containing 0.02% sodium azide and 25% glycerol. |
| Host | Rat |
| Immunogen | Synthetic peptide corresponding to aa 20-40 (Q20PAERPPQLRPGAPTSLQTEP40) of mouse BimL. |
| Isotype | IgG2a |
| Purity Detail | Protein G-affinity purified. |
| Recommendation Dilutions/Conditions | Immunoprecipitation (2µg/ml)Western Blot (1-5µg/ml)Suggested dilutions/conditions may not be available for all applications.Optimal conditions must be determined individually for each application. |
| Species Reactivity | Dog, Human, Monkey, Mouse, Rat |
| Specificity | Recognizes an epitope within aa 20-40 of im _L (~19kDa), Bim _{EL} (~23kDa), and Bim _S (~16kDa). Also recognizes the six novel isoforms of human Bim, generated by alternative splicing and lacking the C-terminal hydrophobic region recently identified. |

UniProt ID

O54918

Worry-free Guarantee

This antibody is covered by our [Worry-Free Guarantee](#)

Last modified: May 29, 2024



ENZO LIFE SCIENCES,
INC.
Phone: 800.942.0430
info-usa@enzolifesciences.com

European Sales Office
ENZO LIFE SCIENCES
(ELS) AG
Phone: +41 61 926 8989
info-eu@enzolifesciences.com

Belgium, The Netherlands
& Luxembourg
Phone: +32 3 466 0420
info-be@enzolifesciences.com

France
Phone: +33 472 440 655
info-fr@enzolifesciences.com

Germany
Phone: +49 7621 5500 526
info-de@enzolifesciences.com

UK & Ireland
Phone (UK customers):
0845 601 1488
Phone: +44 1392 825900
info-uk@enzolifesciences.com