

Bim_{S/EL/L} monoclonal antibody (14A8)

This antibody is covered by our [Worry-Free Guarantee](#).

Citations: 9

[View Online »](#)

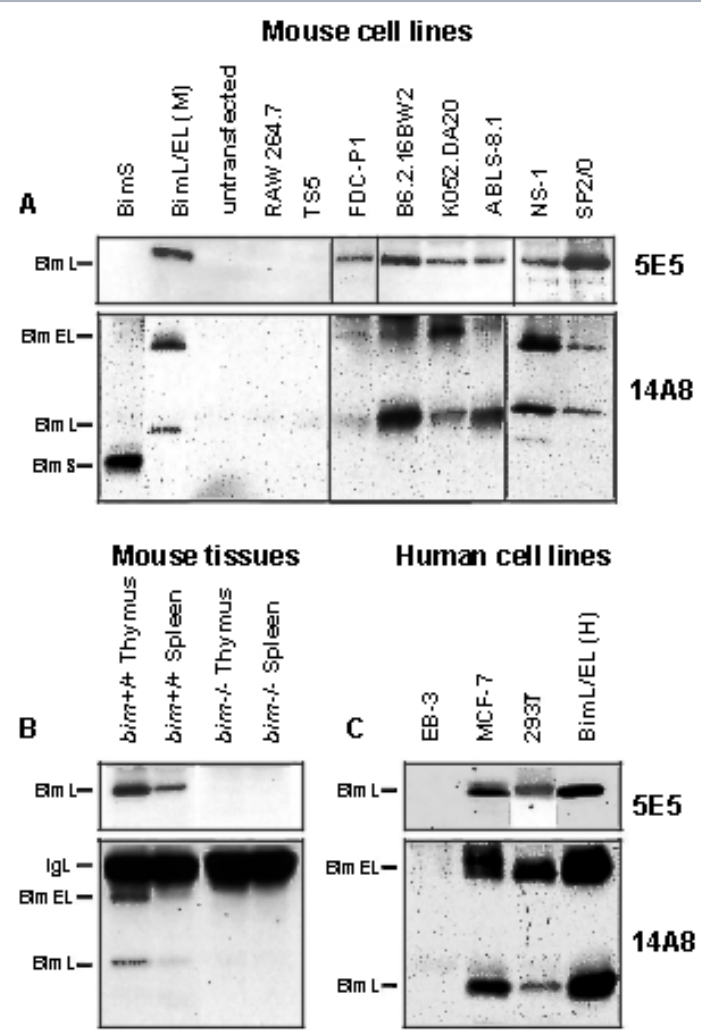
Ordering Information

[Order Online »](#)

ALX-804-351-C100	100µg
------------------	-------

Manuals, SDS & CofA

[View Online »](#)



Figures: IP/Western blot analysis of Bim expression in mouse (A) and human (C) cell lines. Bim proteins were immunoprecipitated from lysates of 10^7 cells with anti-Bim_{S/EL/L} MAbs (clone 14A8) (Prod. No. [ALX-804-351](#)) and anti-Bim_L MAbs (clone 5E5) (Prod. No. ALX-804-352). Western blot analysis was performed with clones 14A8 and 5E5 followed by the addition of biotinylated mouse anti-rat IgG2b antibody and HRP-conjugated mouse anti-rat IgG2a antibody as the respective secondary antibodies

Handling & Storage

Handling	Avoid freeze/thaw cycles.
Short Term Storage	+4°C
Long Term Storage	-20°C
Shipping	Blue Ice

Regulatory Status

RUO - Research Use Only

Product Details

Alternative Name	BCL2L11
Application	Flow Cytometry, ICC, IHC (PS), IP, WB
Clone	14A8
Formulation	Liquid. In PBS containing 10mM sodium azide.
Host	Rat
Immunogen	Recombinant mouse BimS.
Isotype	IgG2a
Purity Detail	Protein G-affinity purified.
Recommendation Dilutions/Conditions	Flow Cytometry (0.5-1µg/ml; overexpressing cell lines)Immunocytochemistry (1-5µg/ml)Immunohistochemistry (paraffin sections, 1-5µg/ml)Immunoprecipitation (1-2µg/ml)Western Blot (1-2µg/ml)Suggested dilutions/conditions may not be available for all applications.Optimal conditions must be determined individually for each application.
Species Reactivity	Human, Monkey, Mouse
Specificity	Recognizes Bim _L , Bim _{EL} and Bim _S .

Technical Info / Product Notes

As Bim expression is generally low in non-transfected cell lines, please take care when choosing positive controls. Examples of cell lines which express detectable levels of Bim include: B6.2.16.BW2 or KO52.DA20 (T cell lymphomas) or ABL5.8.1 (B cell lymphoma) or MCF-7s. It is generally necessary to use a high amount of lysate (e.g. 1 x 10⁷ cells). When using tissue samples, it is generally necessary to use 1-5mg of total protein from an appropriate tissue source.

UniProt ID O54918

Worry-free Guarantee This antibody is covered by our [Worry-Free Guarantee](#).



ENZO LIFE SCIENCES,
INC.
Phone: 800.942.0430
[info-
usa@enzolifesciences.com](mailto:info-usa@enzolifesciences.com)

European Sales Office
ENZO LIFE SCIENCES
(ELS) AG
Phone: +41 61 926 8989
[info-
eu@enzolifesciences.com](mailto:info-eu@enzolifesciences.com)

Belgium, The Netherlands
& Luxembourg
Phone: +32 3 466 0420
[info-
be@enzolifesciences.com](mailto:info-be@enzolifesciences.com)

France
Phone: +33 472 440 655
[info-
fr@enzolifesciences.com](mailto:info-fr@enzolifesciences.com)

Germany
Phone: +49 7621 5500 526
[info-
de@enzolifesciences.com](mailto:info-de@enzolifesciences.com)

UK & Ireland
Phone (UK customers):
0845 601 1488
Phone: +44 1392 825900
[info-
uk@enzolifesciences.com](mailto:info-uk@enzolifesciences.com)