

Bim/BOD polyclonal antibody

Bim/BOD is a group of three splice variants, BimEL, BimL, and BimS, with apparent molecular masses of ~23, 16, and 13 kDa, respectively. Bim is a critical regulator of lymphocyte homeostasis, acts as a barrier against autoimmune disease and is necessary for the apoptotic response to certain stress signals. All isoforms of Bim contain the C-terminal Bcl-2 homology domain known as BH3. Certain apoptotic stimuli release Bim from the complex which allows it to translocate to the mitochondria and bind to Bcl-2 or its homologues, thereby promoting apoptosis.

This antibody is covered by our [Worry-Free Guarantee](#).

Citations: 29

[View Online »](#)

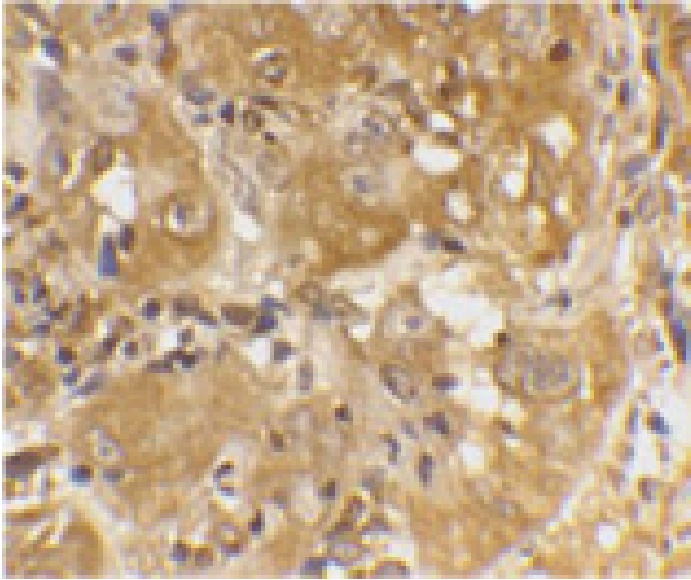
Ordering Information

[Order Online »](#)

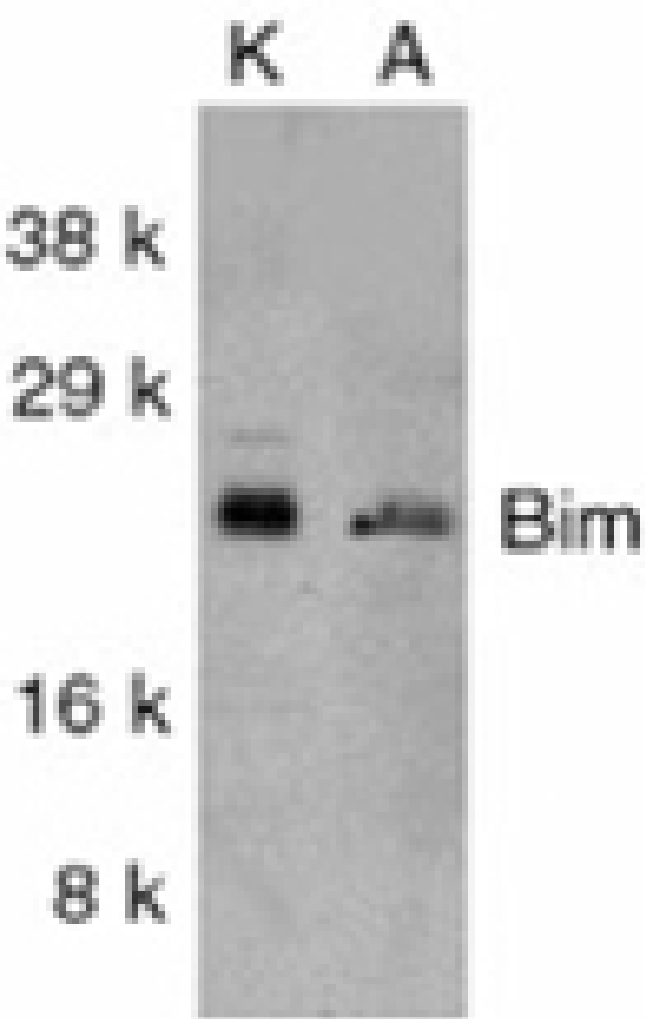
ADI-AAP-330-E	100µg
---------------	-------

Manuals, SDS & CofA

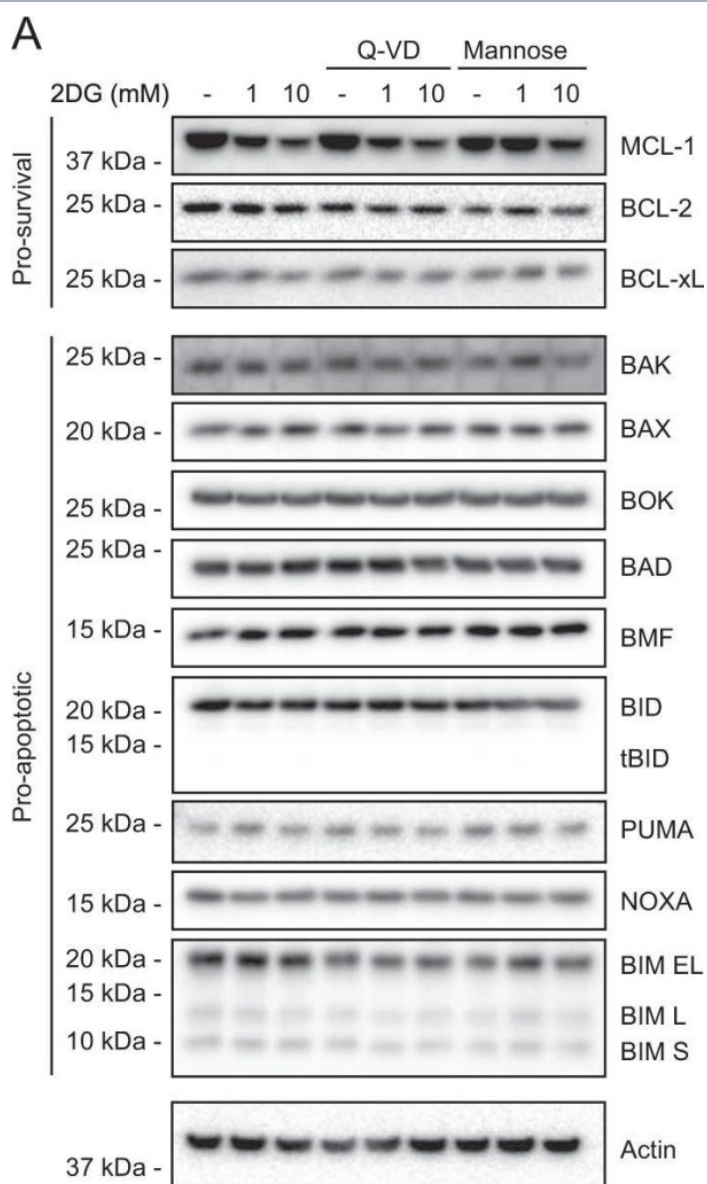
[View Online »](#)



Immunohistochemistry analysis of Bim in human skin cancer cells with Bim antibody at 20µg/ml.



Western blot analysis of human K562 cell lysate probed with Bim/BOD, pAb.



Selective impact of 2DG on the BCL-2 protein family. a Abundance of pro-survival and pro-apoptotic proteins of the family, assessed by western blotting, in NALM-6 cells after 6 h of 2DG treatment (1 or 10 mM), showing that only MCL-1 is affected and that mannose (10 mM), but not caspase inhibition (50 μ M Q-VD), partially relieves the MCL-1 drop. bMCL-1 mRNA abundance assessed by quantitative RT-PCR in NALM-6 cells treated for 6 h with 2DG (1 or 10 mM) and co-treated as indicated with Q-VD (50 μ M) or mannose (10 mM). TRIzol purified mRNA was subjected to random primer RT-PCR, and MCL-1 mRNA level determined by quantitative PCR, normalized by a geometrical mean of four housekeeping mRNAs (GAPDH, TUB β 1, PPIA, and TBP, see Methods). Data are plotted as mean \pm SD. Significance was determined by two-way ANOVA: ****P 0.05)

Image collected and cropped by CiteAb under a CC-BY license from the following publication: By reducing global mRNA translation in several ways, 2-deoxyglucose lowers MCL-1 protein and sensitizes hemopoietic tumor cells to BH3 mimetic ABT737. *Cell Death Differ* (2019)

Handling & Storage

Long Term Storage -20°C

Shipping Blue Ice

Regulatory Status RUO - Research Use Only

Product Details

Alternative Name BimEL, BimL, BCL2-like

Application IHC, WB

Application Notes Detects a band of ~23kDa by Western blot.

Formulation Liquid. In PBS containing 0.02% sodium azide.

GenBank ID AF032457, AF032458

Host Rabbit

Immunogen Synthetic peptide corresponding to the sequence near the middle of human Bim/BOD.

Purity Detail Peptide affinity purified.

Recommendation
Dilutions/Conditions Immunohistochemistry (20µg/ml)Western Blot (1µg/ml, colorimetric)Suggested dilutions/conditions may not be available for all applications.Optimal conditions must be determined individually for each application.

Species Reactivity Human, Mouse, Rat

UniProt ID O43521

Worry-free Guarantee This antibody is covered by our [Worry-Free Guarantee](#).



ENZO LIFE SCIENCES,
INC.
Phone: 800.942.0430
[info-
usa@enzolifesciences.com](mailto:info-usa@enzolifesciences.com)

European Sales Office
ENZO LIFE SCIENCES
(ELS) AG
Phone: +41 61 926 8989
[info-
eu@enzolifesciences.com](mailto:info-eu@enzolifesciences.com)

Belgium, The Netherlands
& Luxembourg
Phone: +32 3 466 0420
[info-
be@enzolifesciences.com](mailto:info-be@enzolifesciences.com)

France
Phone: +33 472 440 655
[info-
fr@enzolifesciences.com](mailto:info-fr@enzolifesciences.com)

Germany
Phone: +49 7621 5500 526
[info-
de@enzolifesciences.com](mailto:info-de@enzolifesciences.com)

UK & Ireland
Phone (UK customers):
0845 601 1488
Phone: +44 1392 825900
[info-
uk@enzolifesciences.com](mailto:info-uk@enzolifesciences.com)