

Bilobalide

Exerts trophic and protective effects on neurons

Bilobalide is a terpenoid isolated from *Ginkgo biloba*. It has been proposed to exert trophic and protective effects on neurons. It increases the sensitivity of mouse pancreatic β cells to glucose and displays protective effects during hypoxia.

Citations: 3

[View Online »](#)

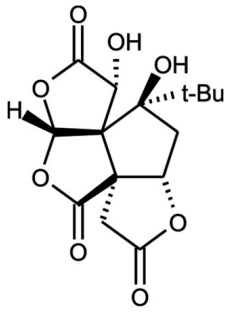
Ordering Information

[Order Online »](#)

BML-N140-0010	10mg
---------------	------

Manuals, SDS & CofA

[View Online »](#)



BML-N140
Bilobalide

Handling & Storage

Use/Stability As indicated on product label or CoA when stored as recommended.

Long Term Storage -20°C

Shipping Ambient Temperature

Regulatory Status RUO - Research Use Only

Product Details

Appearance White powder.

CAS 33570-04-6

Formula $C_{15}H_{18}O_8$

MW 326.3

Purity ≥98% (HPLC)

Solubility Soluble in acetone (clear colorless solution at 25mg/ml).

Last modified: May 29, 2024



ENZO LIFE SCIENCES,
INC.
Phone: 800.942.0430
[info-
usa@enzolifesciences.com](mailto:info-usa@enzolifesciences.com)

European Sales Office
ENZO LIFE SCIENCES
(ELS) AG
Phone: +41 61 926 8989
[info-
eu@enzolifesciences.com](mailto:info-eu@enzolifesciences.com)

Belgium, The Netherlands
& Luxembourg
Phone: +32 3 466 0420
[info-
be@enzolifesciences.com](mailto:info-be@enzolifesciences.com)

France
Phone: +33 472 440 655
[info-
fr@enzolifesciences.com](mailto:info-fr@enzolifesciences.com)

Germany
Phone: +49 7621 5500 526
[info-
de@enzolifesciences.com](mailto:info-de@enzolifesciences.com)

UK & Ireland
Phone (UK customers):
0845 601 1488
Phone: +44 1392 825900
[info-
uk@enzolifesciences.com](mailto:info-uk@enzolifesciences.com)