

# Big Endothelin-1 (rat), ELISA kit

The Big Endothelin-1 (rat), ELISA kit is a colorimetric immunometric enzyme immunoassay kit

The Big Endothelin-1 (rat), EIA kit is a colorimetric immunometric enzyme immunoassay kit with results overnight + 1 hour.

Endothelins (ET) are isopeptides produced by vascular endothelium that have potent vasoconstrictive activity. The peptides are encoded by three separate genes and processed to yield 39-residue "Big ET" molecules which are further processed to the 21 amino acid sequences designated ET-1, ET-2 and ET-3. ET action is mediated via binding to two receptors, ET<sub>A</sub> and ET<sub>B</sub>. Activation of ET<sub>A</sub> increases vasoconstriction and sodium retention, thereby increasing blood pressure. Activation of ET<sub>B</sub> receptors triggers the release of vasorelaxive factors such as nitric oxide (NO) and prostanoids from endothelial cells and increases urine production and elimination, thereby lowering blood pressure.

Citations: 4

[View Online »](#)

## Ordering Information

[Order Online »](#)

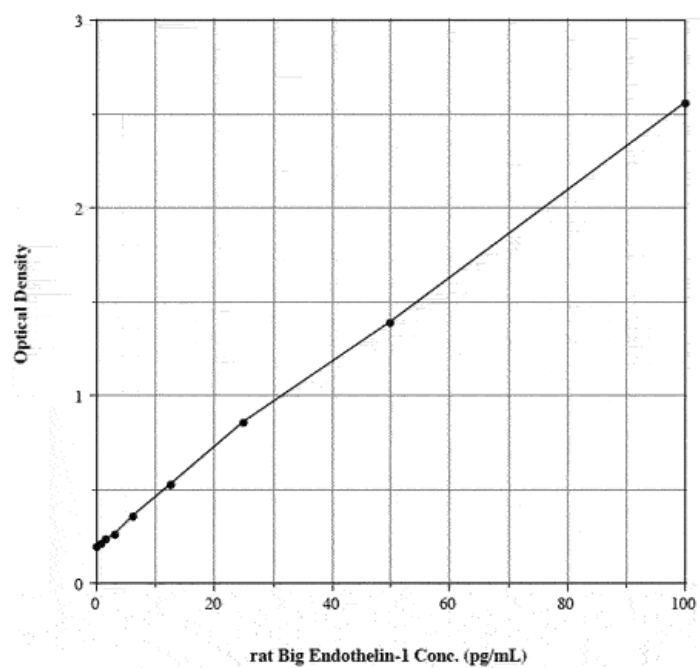
ADI-900-073

96 wells

## Manuals, SDS & CofA

[View Online »](#)

- Measure low levels of rat Big ET-1
- Convenient 4°C storage
- Assay up to 38 samples in duplicate per plate



## Handling & Storage

Long Term Storage +4°C

Shipping Blue Ice

## Regulatory Status RUO - Research Use Only

## Product Details

Alternative Name	Big ET-1
Application	Colorimetric detection, ELISA
Application Notes	For the quantitative determination of rat Big ET-1 in culture supernatants, plasma, and serum.
Assay Time	Overnight + 1 hour
Compatibility	This product is compatible with the <a href="#">Absorbance 96 Plate Reader</a> .
Contents	Microtiter plate, Labeled antibody concentrate, Antibody diluent, Assay buffer, Wash buffer concentrate, Standard, TMB Substrate, Stop solution
Sensitivity	0.72 pg/ml (range 0.78 – 100 pg/ml)
Species Reactivity	Rat
UniProt ID	P22388
Wavelength	450 nm

Last modified: May 29, 2024



ENZO LIFE SCIENCES,  
INC.  
Phone: 800.942.0430  
[info-  
usa@enzolifesciences.com](mailto:info-usa@enzolifesciences.com)

European Sales Office  
ENZO LIFE SCIENCES  
(ELS) AG  
Phone: +41 61 926 8989  
[info-  
eu@enzolifesciences.com](mailto:info-eu@enzolifesciences.com)

Belgium, The Netherlands  
& Luxembourg  
Phone: +32 3 466 0420  
[info-  
be@enzolifesciences.com](mailto:info-be@enzolifesciences.com)

France  
Phone: +33 472 440 655  
[info-  
fr@enzolifesciences.com](mailto:info-fr@enzolifesciences.com)

Germany  
Phone: +49 7621 5500 526  
[info-  
de@enzolifesciences.com](mailto:info-de@enzolifesciences.com)

UK & Ireland  
Phone (UK customers):  
0845 601 1488  
Phone: +44 1392 825900  
[info-  
uk@enzolifesciences.com](mailto:info-uk@enzolifesciences.com)