

Big Endothelin-1 (human), ELISA kit

The Big Endothelin-1 (human), ELISA kit is a colorimetric immunometric enzyme immunoassay kit

The Big Endothelin-1 (human), EIA kit is a colorimetric immunometric enzyme immunoassay kit with results overnight + 1 hour.

Endothelins (ET) are isopeptides produced by vascular endothelium that have potent vasoconstrictive activity. The peptides are encoded by three separate genes and processed to yield 39-residue "Big ET" molecules which are further processed to the 21 amino acid sequences designated ET-1, ET-2 and ET-3. ET action is mediated via binding to two receptors, ET_A and ET_B. Activation of ET_A increases vasoconstriction and sodium retention, thereby increasing blood pressure. Activation of ET_B receptors triggers the release of vasorelaxive factors such as nitric oxide (NO) and prostanoids from endothelial cells and increases urine production and elimination, thereby lowering blood pressure.

Citations: 4

[View Online »](#)

Ordering Information

[Order Online »](#)

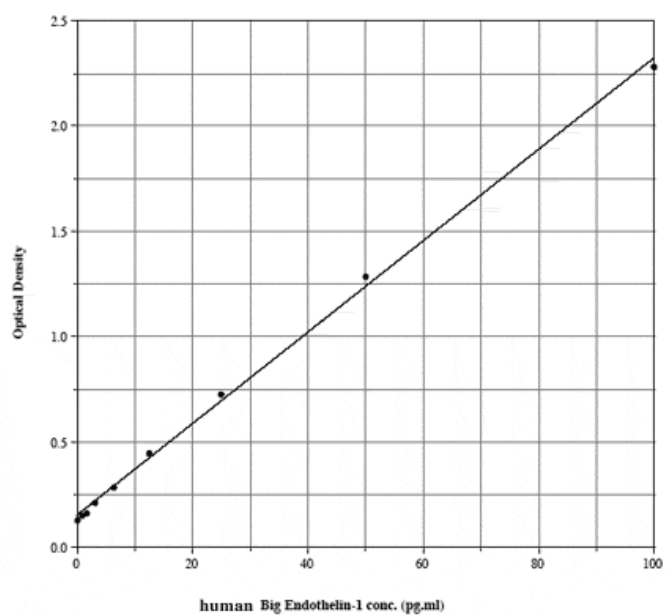
ADI-900-022

96 wells

Manuals, SDS & CofA

[View Online »](#)

- Safe - non-radioactive determination of Big ET-1
- Easy-to-use - less steps compared to Western blot
- Reliable - consistent results lot-after-lot



Handling & Storage

Long Term Storage +4°C

Shipping Blue Ice

Regulatory Status RUO - Research Use Only

Product Details

Alternative Name Big ET-1

Application Colorimetric detection, ELISA

Application Notes For the quantitative determination of human Big ET-1 in culture supernatants, serum, and EDTA plasma. Cited species and sample type include rabbit and lung lavage fluid.

Assay Time Overnight + 1 hour

Compatibility This product is compatible with the [Absorbance 96 Plate Reader](#).

Contents Microtiter plate, Labeled antibody concentrate, Antibody diluent, Assay buffer, Wash buffer concentrate, Standard, TMB Substrate, Stop solution

Sensitivity 0.30 pg/ml (range 0.78 – 100 pg/ml)

Species Reactivity Human

UniProt ID P05305

Wavelength 450 nm



ENZO LIFE SCIENCES,
INC.
Phone: 800.942.0430
[info-
usa@enzolifesciences.com](mailto:info-usa@enzolifesciences.com)

European Sales Office
ENZO LIFE SCIENCES
(ELS) AG
Phone: +41 61 926 8989
[info-
eu@enzolifesciences.com](mailto:info-eu@enzolifesciences.com)

Belgium, The Netherlands
& Luxembourg
Phone: +32 3 466 0420
[info-
fr@enzolifesciences.com](mailto:info-fr@enzolifesciences.com)

France
Phone: +33 472 440 655
[info-
fr@enzolifesciences.com](mailto:info-fr@enzolifesciences.com)

Germany
Phone: +49 7621 5500 526
[info-
de@enzolifesciences.com](mailto:info-de@enzolifesciences.com)

UK & Ireland
Phone (UK customers):
0845 601 1488
Phone: +44 1392 825900
[info-
uk@enzolifesciences.com](mailto:info-uk@enzolifesciences.com)