

Beclin-1 polyclonal antibody

Beclin-1 is a coiled-coil Bcl-2-interacting protein that functions in autophagy, the process of bulk degradation of cellular proteins. Beclin-1 is homologous to the yeast autophagy gene *apg6*, and is expressed at reduced levels in human breast carcinoma, suggesting that defects in autophagy proteins may contribute to the development or progression of tumors. Bcl-2 can inhibit Beclin-1-dependent autophagy in yeast and mammalian cells, suggesting that Bcl-2 functions as both an anti-autophagic and anti-apoptotic protein.

This antibody is covered by our [Worry-Free Guarantee](#).

Citations: 3

[View Online »](#)

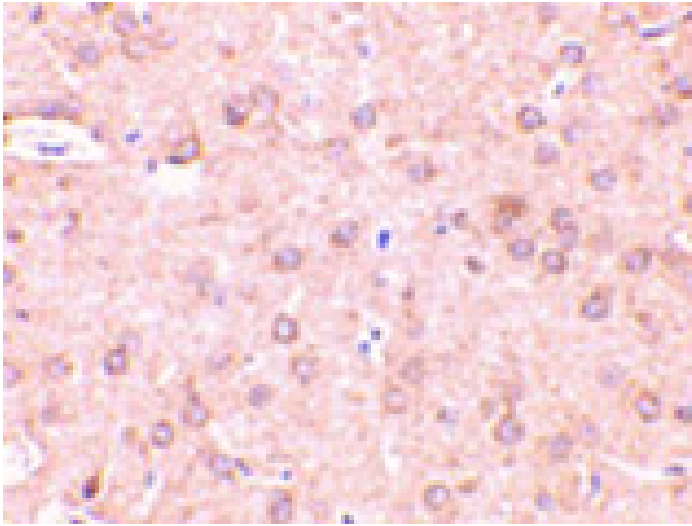
Ordering Information

[Order Online »](#)

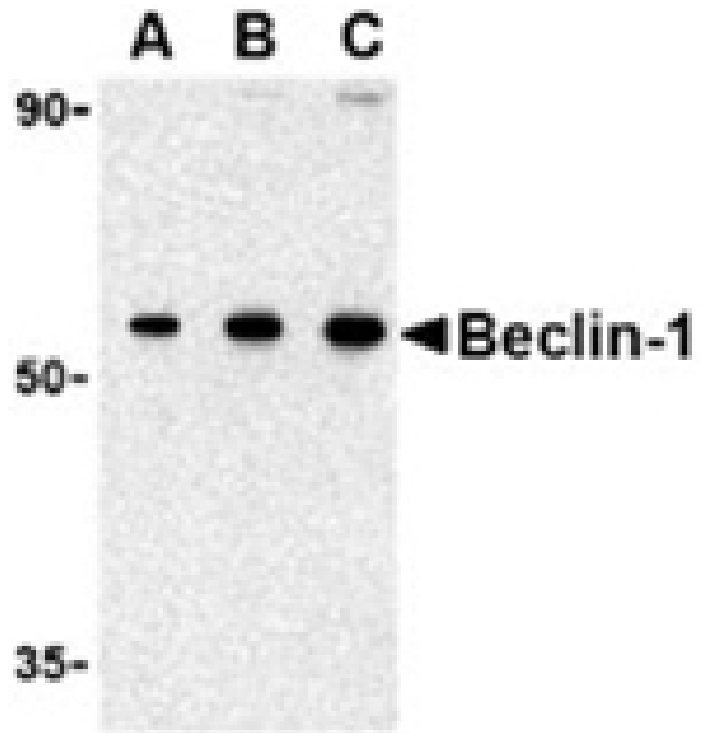
ADI-905-721-100	100µg
-----------------	-------

Manuals, SDS & CofA

[View Online »](#)



Immunohistochemistry analysis of beclin-1 in rat brain tissue with beclin-1 antibody at 2 μ g/ml.



Western blot analysis of Beclin-1 in 293 cell lysate with Beclin-1 antibody at (A) 0.5, (B) 1 and (C) 2 μ g/ml.

Handling & Storage

Long Term Storage -20°C

Shipping Blue Ice

Regulatory Status

RUO - Research Use Only

Product Details

Application IHC, WB

Application Notes Detects a band of ~57kDa by Western blot.

Formulation Liquid. In PBS containing 0.02% sodium azide.

Host Rabbit

Immunogen Synthetic peptide corresponding to the sequence near the N-terminus of human Beclin-1.

Purity Detail Peptide affinity purified.

Recommendation Dilutions/Conditions Immunohistochemistry (2µg/ml)Western Blot (0.5-1.0µg/ml)Suggested dilutions/conditions may not be available for all applications.Optimal conditions must be determined individually for each application.

Species Reactivity Human, Mouse, Rat

UniProt ID Q14457

Worry-free Guarantee This antibody is covered by our [Worry-Free Guarantee](#).

Last modified: May 29, 2024



ENZO LIFE SCIENCES,
INC.
Phone: 800.942.0430
[info-
usa@enzolifesciences.com](mailto:info-usa@enzolifesciences.com)

European Sales Office
ENZO LIFE SCIENCES
(ELS) AG
Phone: +41 61 926 8989
[info-
be@enzolifesciences.com](mailto:info-be@enzolifesciences.com)

Belgium, The Netherlands
& Luxembourg
Phone: +32 3 466 0420
[info-
fr@enzolifesciences.com](mailto:info-fr@enzolifesciences.com)

France
Phone: +33 472 440 655
[info-
fr@enzolifesciences.com](mailto:info-fr@enzolifesciences.com)

Germany
Phone: +49 7621 5500 526
[info-
de@enzolifesciences.com](mailto:info-de@enzolifesciences.com)

UK & Ireland
Phone (UK customers):
0845 601 1488
Phone: +44 1392 825900
[info-
uk@enzolifesciences.com](mailto:info-uk@enzolifesciences.com)