

# Bcl6 monoclonal antibody (SPM602)

Antibody to bcl-6 is helpful in a number of diagnostic settings: (1) In the differential diagnosis of small B-cell lymphoma. Follicular lymphoma will show bcl-6 (and CD10) positivity whereas other small B-cell lymphomas are usually negative. (2) Bcl-6 is an important prognostic marker in diffuse large B-cell lymphomas (DLBCL), where CD10, bcl-6 and MUM1/IRF4 are used to identify germinal center and activated B-cell phenotypes. (3) Bcl-6 can be valuable in distinguishing classical Hodgkin lymphoma from nodular lymphocyte predominant Hodgkin lymphoma (NLPHL). The Reed-Sternberg cells of classical Hodgkin lymphoma are bcl-6 negative whereas the large (L&H) cells of NLPHL are bcl-6 positive. In contrast, anti-Bcl-6 rarely stains mantle-cell lymphoma and MALT lymphoma.

This antibody is covered by our [Worry-Free Guarantee](#).

Citations: 1

[View Online »](#)

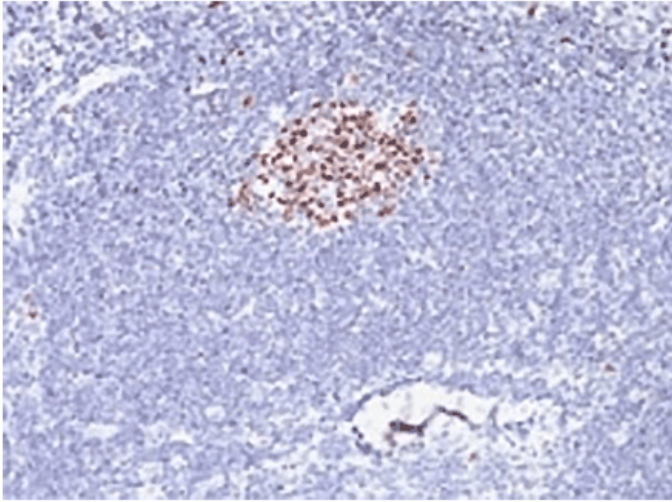
## Ordering Information

[Order Online »](#)

ENZ-ABS771-0100	100µg
-----------------	-------

## Manuals, SDS & CofA

[View Online »](#)



IHC testing of formalin-fixed, paraffin-embedded human tonsil stained with anti-Bcl6 antibody

## Handling & Storage

**Handling** Avoid freeze/thaw cycles.

**Long Term Storage** -20°C

**Shipping** Blue Ice

**Regulatory Status** RUO - Research Use Only

## Product Details

**Alternative Name** B-cell lymphoma 6 protein, B-cell lymphoma 5 protein, Bcl5

**Application** IHC

**Clone** SPM602

**Formulation** Liquid. In 1X PBS containing 0.1 mg/ml BSA and 0.05% sodium azide.

**Host** Mouse

**Immunogen** Recombinant human Bcl6.

**Isotype** IgG1κ

**Purity Detail** Protein G affinity purified.

**Species Reactivity** Human, Mouse

**Specificity** Recognizes a protein of 95kDa, which is identified as Bcl-6.

**UniProt ID** P41182

**Worry-free Guarantee** This antibody is covered by our [Worry-Free Guarantee](#).



ENZO LIFE SCIENCES,  
INC.  
Phone: 800.942.0430  
[info-  
usa@enzolifesciences.com](mailto:info-usa@enzolifesciences.com)

European Sales Office  
ENZO LIFE SCIENCES  
(ELS) AG  
Phone: +41 61 926 8989  
[info-  
eu@enzolifesciences.com](mailto:info-eu@enzolifesciences.com)

Belgium, The Netherlands  
& Luxembourg  
Phone: +32 3 466 0420  
[info-  
be@enzolifesciences.com](mailto:info-be@enzolifesciences.com)

France  
Phone: +33 472 440 655  
[info-  
fr@enzolifesciences.com](mailto:info-fr@enzolifesciences.com)

Germany  
Phone: +49 7621 5500 526  
[info-  
de@enzolifesciences.com](mailto:info-de@enzolifesciences.com)

UK & Ireland  
Phone (UK customers):  
0845 601 1488  
Phone: +44 1392 825900  
[info-  
uk@enzolifesciences.com](mailto:info-uk@enzolifesciences.com)