

Bcl-xL monoclonal antibody (2H12)

The Bcl-2 family of proteins regulate the intrinsic apoptotic pathway and are characterized by the sharing of at least one of four conserved Bcl-2 Homology (BH) domains. Bcl-2 family members function as either pro- or anti-apoptotic factors, and are generally categorized into three groups based on structural homology and function. Bcl-2-like proteins (Bcl-2, Bcl-xL, Bcl-w, A1, and Mcl-1) are pro-survival. Pro-apoptotic members can be sub-divided into two groups: the multi-BH domain group, including Bax, Bak, and Bok; and the more numerous and diverse BH3-only group, which includes Bim, Bad, and Bid.

This antibody is covered by our [Worry-Free Guarantee](#).

Citations: 1

[View Online »](#)

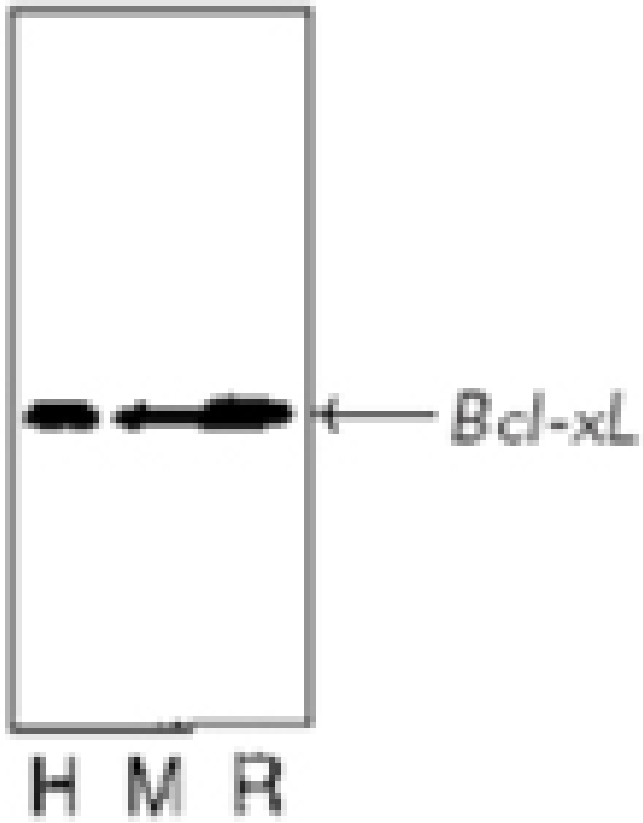
Ordering Information

[Order Online »](#)

ADI-AAM-080-E	100µg
---------------	-------

Manuals, SDS & CofA

[View Online »](#)



Western blot analysis of thymocytes from human, mouse and rat, probed with Bcl-xL mAb (2H12).

Handling & Storage

Long Term Storage -20°C

Shipping Blue Ice

Regulatory Status

RUO - Research Use Only

Product Details

Alternative Name	BCL2L1
Application	WB
Application Notes	Detects a band of ~28kDa by Western blot.
Clone	2H12
Formulation	Liquid. In PBS.
Gene/Protein Identifier	B47537 (PIR)
Host	Mouse
Immunogen	Synthetic peptide corresponding to the sequence near the N-terminus of human Bcl-xL.
Isotype	IgG2a
Purity Detail	Purified by protein A/G chromatography.
Recommendation Dilutions/Conditions	Western Blot (1-5µg/ml, ECL)Suggested dilutions/conditions may not be available for all applications.Optimal conditions must be determined individually for each application.
Species Reactivity	Human, Mouse, Rat
UniProt ID	Q07817
Worry-free Guarantee	This antibody is covered by our Worry-Free Guarantee



ENZO LIFE SCIENCES,
INC.
Phone: 800.942.0430
[info-
usa@enzolifesciences.com](mailto:info-usa@enzolifesciences.com)

European Sales Office
ENZO LIFE SCIENCES
(ELS) AG
Phone: +41 61 926 8989
[info-
eu@enzolifesciences.com](mailto:info-eu@enzolifesciences.com)

Belgium, The Netherlands
& Luxembourg
Phone: +32 3 466 0420
[info-
be@enzolifesciences.com](mailto:info-be@enzolifesciences.com)

France
Phone: +33 472 440 655
[info-
fr@enzolifesciences.com](mailto:info-fr@enzolifesciences.com)

Germany
Phone: +49 7621 5500 526
[info-
de@enzolifesciences.com](mailto:info-de@enzolifesciences.com)

UK & Ireland
Phone (UK customers):
0845 601 1488
Phone: +44 1392 825900
[info-
uk@enzolifesciences.com](mailto:info-uk@enzolifesciences.com)