

# Bcl-w monoclonal antibody (13F9)

This antibody is covered by our [Worry-Free Guarantee](#).

Citations: 4

[View Online »](#)

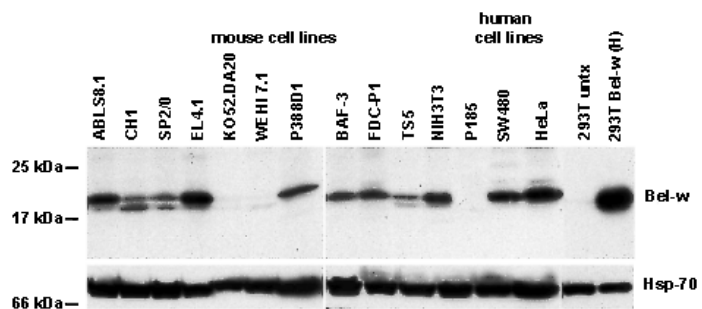
Ordering Information

[Order Online »](#)

ALX-804-353-C100	100µg
------------------	-------

Manuals, SDS & CofA

[View Online »](#)



**Figure:** Immunoprecipitation/Western blot showing the detection of Bcl-w in human and mouse cell lines. Lysates from  $10^7$  cells were immunoprecipitated by clone 13F9 and the fractionated proteins were then blotted with the same antibody. Hsp-70 expression was used as an equal loading control, and 293T cells transiently transfected with a human *bcl-w* expression construct were used as a positive control.

## Handling & Storage

Handling	Avoid freeze/thaw cycles.
Short Term Storage	+4°C
Long Term Storage	-20°C
Shipping	Blue Ice

## Regulatory Status

RUO - Research Use Only

## Product Details

Alternative Name	BCL2L2
Application	IP, WB
Application Notes	Excellent for Immunoprecipitation.
Clone	13F9
Formulation	Liquid. In PBS containing 0.02% sodium azide.
Host	Rat
Immunogen	Recombinant human Bcl-w.
Isotype	IgG2a
Purity Detail	Protein G-affinity purified.
Species Reactivity	Dog, Human, Monkey, Mouse, Rat
UniProt ID	Q92843
Worry-free Guarantee	This antibody is covered by our <a href="#">Worry-Free Guarantee</a>