

BAPTA-AM

PKC activator

BAPTA is a Ca^{2+} chelator with 105-fold greater affinity for Ca^{2+} than for Mg^{2+} . BAPTA-AM is a cell-permeable derivative which is widely used as an intracellular calcium sponge. Induces inactivation of protein kinase C. Also inhibits thapsigargin-induced apoptosis in rat thymocytes.

Citations: 23

[View Online »](#)

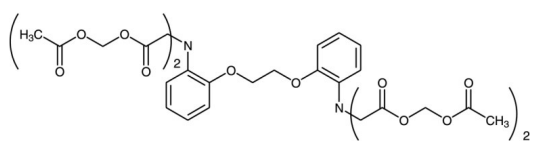
Ordering Information

[Order Online »](#)

BML-CA411-0025	25mg
----------------	------

Manuals, SDS & CofA

[View Online »](#)



Handling & Storage

Use/Stability As indicated on product label or CoA when stored as recommended.

Handling Protect from light.

Long Term Storage -20°C

Shipping Ambient Temperature

Regulatory Status RUO - Research Use Only

Product Details

Alternative Name 1,2-bis-(o-Aminophenoxy)-ethane-N,N,N',N'-tetraacetic acid, tetraacetoxymethyl ester

Appearance White to off-white powder.

CAS 126150-97-8

Couple Target PKC

Couple Type Activator

Formula $C_{34}H_{40}N_2O_{18}$

Identity Determined by NMR.

MW 764.7

Purity ≥90% (HPLC)

Solubility Soluble in DMSO (25mg/ml), dimethyl formamide (25mg/ml) or 100% ethanol (5mg/ml, warm)



ENZO LIFE SCIENCES,
INC.
Phone: 800.942.0430
info-usa@enzolifesciences.com

European Sales Office
ENZO LIFE SCIENCES
(ELS) AG
Phone: +41 61 926 8989
info-eu@enzolifesciences.com

Belgium, The Netherlands
& Luxembourg
Phone: +32 3 466 0420
info-be@enzolifesciences.com

France
Phone: +33 472 440 655
info-fr@enzolifesciences.com

Germany
Phone: +49 7621 5500 526
info-de@enzolifesciences.com

UK & Ireland
Phone (UK customers):
0845 601 1488
Phone: +44 1392 825900
info-uk@enzolifesciences.com