

BAFF (human) monoclonal antibody (Buffy-1)

This antibody is covered by our [Worry-Free Guarantee](#).

Citations: 5

[View Online »](#)

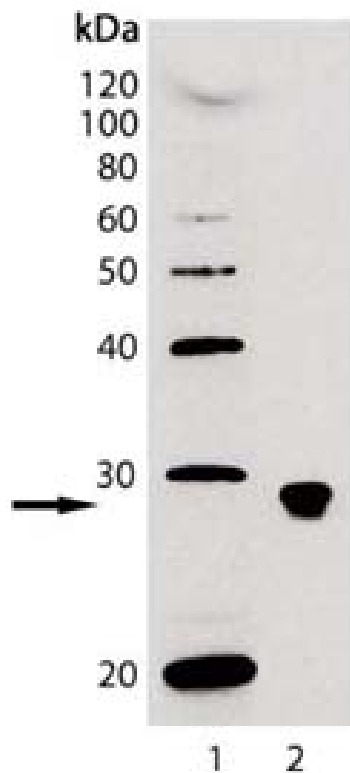
Ordering Information

[Order Online »](#)

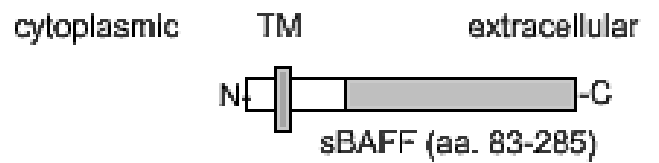
ALX-804-128-C100	100µg
------------------	-------

Manuals, SDS & CofA

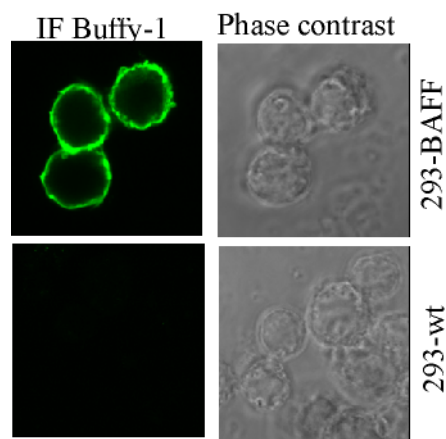
[View Online »](#)



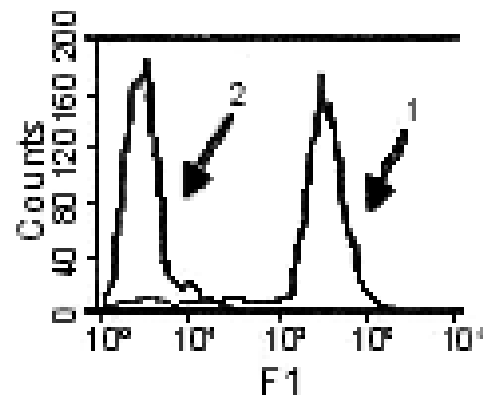
Western blot analysis of BAFF (human), mAb (Buffy-1) (Prod. No. ALX-804-128): Lane 1: MW marker; Lane 2: BAFF (soluble) (human), (recombinant) (Prod. No. ALX-522-025).



Schematic structure of human soluble BAFF (rec.) (aa 83-285). Recognizes the stalk region present in the membrane-bound form of hBAFF.



Membrane-bound human BAFF detected by MAb to BAFF (human) (Buffy-1) (Prod. No. [ALX-804-128](#)). Left panel: ICC; Right panel: phase contrast. Lower panel: 293-wt control. "",BAFF (human) monoclonal antibody (Buffy-1) image,BAFF (human) monoclonal antibody (Buffy-1) image,yes ALX-804-128,804-128-4.gif,<http://static.enzolifesciences.com/fileadmin/files/image/804-128-4.gif>,Flow cytometric profile of 293 cells stably transfected with a BAFF-expression plasmid (1). Control (2) are mock transfected 293 cells. Optimal concentration range is 0.5-5 $\mu\text{g/ml}$.**Method:** 293T cells (5×10^5) expressing surface BAFF vector or Mock transfected



Flow cytometric profile of 293 cells stably transfected with a BAFF-expression plasmid (1). Control (2) are mock transfected 293 cells. Optimal concentration range is 0.5-5 $\mu\text{g/ml}$.**Method:** 293T cells (5×10^5) expressing surface BAFF vector or Mock transfected, were incubated on ice for 30 min. in 50 μl FACS buffer (PBS, 5% fetal calf serum, 0.02% azide) containing 4 $\mu\text{g/ml}$ of MAb to BAFF (human) (Buffy-1). After washing in FACS buffer, FITC-conjugated antibody to rat IgG(ALX-211-051) was added and cells were analyzed by flow cytometry.

Handling & Storage

Use/Stability	Stable for at least 6 months after receipt when stored as recommended.
Handling	Avoid freeze/thaw cycles.
Short Term Storage	+4°C
Long Term Storage	-20°C
Shipping	Blue Ice

Regulatory Status

RUO - Research Use Only

Product Details

Alternative Name	B cell-activating factor, BLyS, TALL-1, THANK, zTNF4, TNFSF 13B/20, CD257
Application	Flow Cytometry, ICC, WB
Clone	Buffy-1
Formulation	Liquid. In PBS containing 0.02% sodium azide.
Host	Mouse
Immunogen	Recombinant human soluble BAFF (aa 83-285) (Prod. No. ALX-522-025).
Isotype	IgG2a
Source	Purified from mouse ascites.
Species Reactivity	Human
Specificity	Recognizes membrane-bound BAFF. Detects endogenous protein by FC.
UniProt ID	Q9Y275

Worry-free Guarantee This antibody is covered by our [Worry-Free Guarantee](#).



ENZO LIFE SCIENCES,
INC.
Phone: 800.942.0430
[info-
usa@enzolifesciences.com](mailto:info-usa@enzolifesciences.com)

European Sales Office
ENZO LIFE SCIENCES
(ELS) AG
Phone: +41 61 926 8989
[info-
eu@enzolifesciences.com](mailto:info-be@enzolifesciences.com)

Belgium, The Netherlands
& Luxembourg
Phone: +32 3 466 0420
[info-
be@enzolifesciences.com](mailto:info-fr@enzolifesciences.com)

France
Phone: +33 472 440 655
[info-
fr@enzolifesciences.com](mailto:info-fr@enzolifesciences.com)

Germany
Phone: +49 7621 5500 526
[info-
de@enzolifesciences.com](mailto:info-de@enzolifesciences.com)

UK & Ireland
Phone (UK customers):
0845 601 1488
Phone: +44 1392 825900
[info-
uk@enzolifesciences.com](mailto:info-uk@enzolifesciences.com)