

# Apurinic/apyrimidinic endonuclease (human) monoclonal antibody (13B 8E5C2)

Mammalian apurinic/apyrimidinic (AP) endonuclease (APE1; APEX; HAP1; Ref-1) is a multifunctional, bipartite enzyme that belongs to the class II AP endonucleases and that plays an important role in numerous, cellular functions, like repairing abasic sites (loss of purine or pyrimidine base) in DNA, regulating the redox state of other proteins that play roles in oxidative signalling, transcription factor regulation (Fos, Jun, NF- $\kappa$  B, Myb, HIF-1 $\alpha$ , CREB, Pac), cell cycle control (p53) and apoptosis. APE1 initiates the DNA base excision repair (BER) by cleaving the DNA immediately adjacent to the 5' of an AP site to produce a hydroxyl group at the 3' terminus of an unmodified nucleotide upstream of the nick and a 5'-deoxyribose phosphate moiety downstream. The product of APE1 is further processed by DNA polymerase  $\beta$  to release 5'-deoxyribose phosphate with its intrinsic lyase activity. The nicked DNA is then sealed by DNA ligase I or DNA ligaseIII/XRCC1 to complete this repair process. In addition to the AP endonuclease activity, APE1 also possesses a 3'-5' DNA exonuclease activity, a 3'-phosphodiesterase activity, a 3'-phosphatase activity, and a RNase H activity. It has been shown that APE1 is capable of excision L-configuration deoxyribonucleoside analogs from the 3' termini of DNA. Human APE1 gene is located on chromosome 14q 11.2-12.

This antibody is covered by our [Worry-Free Guarantee](#).

Citations: 3

[View Online »](#)

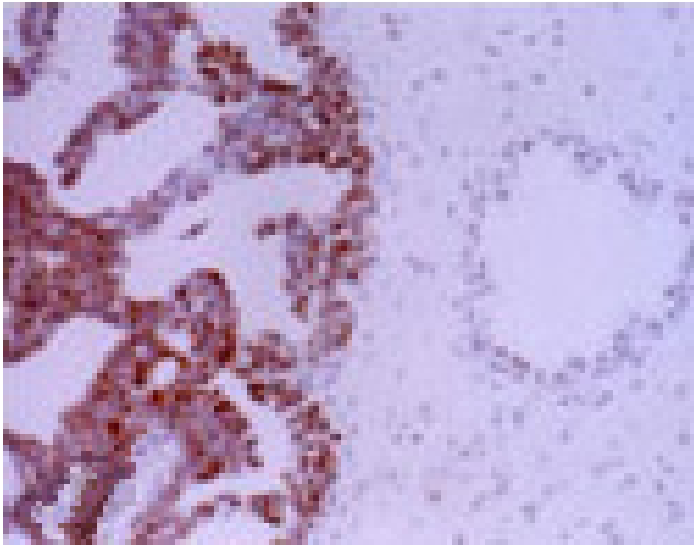
Ordering Information

[Order Online »](#)

ALX-804-213-R100	100 $\mu$ l
------------------	-------------

Manuals, SDS & CofA

[View Online »](#)



## Handling & Storage

**Handling** Avoid freeze/thaw cycles.

**Long Term Storage** -20°C

**Shipping** Blue Ice

**Regulatory Status** RUO - Research Use Only

## Product Details

**Alternative Name** HAP1, APEX, APE1, Ref-1

**Application** IHC (PS), IP, WB

**Application Notes** Detects a band of ~37kDa by Western blot.

**Clone** 13B 8E5C2

**Formulation** Liquid. In PBS containing 0.05% sodium azide.

**Host** Mouse

**Immunogen** Recombinant human APE1 (apurinic/apyrimidinic endonuclease).

**Isotype** IgG2a

**Recommendation Dilutions/Conditions** Immunohistochemistry (paraffin sections, 1:100)Western Blot (1:1,000)Suggested dilutions/conditions may not be available for all applications.Optimal conditions must be determined individually for each application.

**Species Reactivity** Human

**UniProt ID** P27695

**Worry-free Guarantee** This antibody is covered by our [Worry-Free Guarantee](#).



ENZO LIFE SCIENCES,  
INC.  
Phone: 800.942.0430  
[info-  
usa@enzolifesciences.com](mailto:info-usa@enzolifesciences.com)

European Sales Office  
ENZO LIFE SCIENCES  
(ELS) AG  
Phone: +41 61 926 8989  
[info-  
eu@enzolifesciences.com](mailto:info-eu@enzolifesciences.com)

Belgium, The Netherlands  
& Luxembourg  
Phone: +32 3 466 0420  
[info-  
be@enzolifesciences.com](mailto:info-be@enzolifesciences.com)

France  
Phone: +33 472 440 655  
[info-  
fr@enzolifesciences.com](mailto:info-fr@enzolifesciences.com)

Germany  
Phone: +49 7621 5500 526  
[info-  
de@enzolifesciences.com](mailto:info-de@enzolifesciences.com)

UK & Ireland  
Phone (UK customers):  
0845 601 1488  
Phone: +44 1392 825900  
[info-  
uk@enzolifesciences.com](mailto:info-uk@enzolifesciences.com)