

Antipain

Papain inhibitor

Inhibits papain and trypsin and to a small extent plasmin. Antipain is more specific for papain and trypsin than is leupeptin (Prod. No. ALX-260-009). The inhibitory potency of antipain is 100-fold higher than that of elastatinal. Acts by forming a hemiacetal adduct between its aldehyde group and the active serine of the proteinase.

Citations: 3

[View Online »](#)

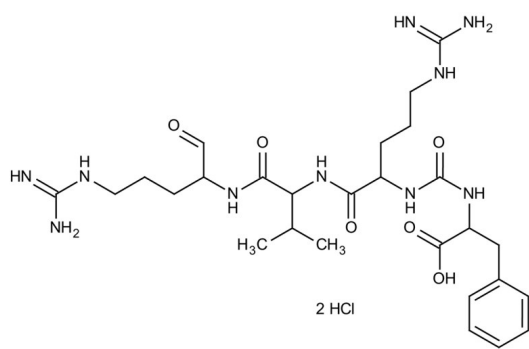
Ordering Information

[Order Online »](#)

ALX-260-093-M005	5mg
ALX-260-093-M025	25mg

Manuals, SDS & CofA

[View Online »](#)



Handling & Storage

Use/Stability	As indicated on product label or CoA when stored as recommended.
Handling	Protect from light.
Long Term Storage	-20°C
Shipping	Ambient Temperature

Regulatory Status

RUO - Research Use Only

Product Details

Activity	Inhibitory Activity ≥ 30 U/mg (Trypsin, L-BAPA)
Alternative Name	[(S)-1-Carboxy-2-phenylethyl]-carbamoyl-Arg-Val-arginal . 2HCl
Appearance	White to off-white powder.
CAS	37682-72-7
Couple Target	Papain
Couple Type	Inhibitor
Formula	$C_{27}H_{44}N_{10}O_6 \cdot 2HCl$
MW	604.7 . 72.9
Purity	$\geq 97\%$ (HPLC)
Sequence	[(S)-1-Carboxy-2-phenylethyl]-carbamoyl-Arg-Val-arginal
Solubility	Soluble in water, methanol, 100 % ethanol or acetonitrile.
Source	Synthetic.



ENZO LIFE SCIENCES,
INC.
Phone: 800.942.0430
[info-
usa@enzolifesciences.com](mailto:info-usa@enzolifesciences.com)

European Sales Office
ENZO LIFE SCIENCES
(ELS) AG
Phone: +41 61 926 8989
[info-
eu@enzolifesciences.com](mailto:info-eu@enzolifesciences.com)

Belgium, The Netherlands
& Luxembourg
Phone: +32 3 466 0420
[info-
be@enzolifesciences.com](mailto:info-be@enzolifesciences.com)

France
Phone: +33 472 440 655
[info-
fr@enzolifesciences.com](mailto:info-fr@enzolifesciences.com)

Germany
Phone: +49 7621 5500 526
[info-
de@enzolifesciences.com](mailto:info-de@enzolifesciences.com)

UK & Ireland
Phone (UK customers):
0845 601 1488
Phone: +44 1392 825900
[info-
uk@enzolifesciences.com](mailto:info-uk@enzolifesciences.com)