

Angiotensin II receptor AT₁ polyclonal antibody

The actions of the octapeptide circulatory hormone angiotensin II are mediated by type one (AT1) and type two (AT2) angiotensin II receptors, members of the seven-transmembrane domain-containing GPCR family. AT1 expression is greatest in vascular smooth muscle, liver, kidney, adrenal cortex, brain, and lung, and is primarily responsible for the physiological effects of angiotensin II in cardiovascular homeostasis. The AT2 receptor displays approximately 30% identity to the AT1 receptor, and is highly expressed during embryonic development. AT2 expression in adult tissue is limited to the adrenal medulla, brain, and reproductive tissues, but is upregulated in injured tissue following myocardial infarction, vascular injury, and wound healing.

This antibody is covered by our [Worry-Free Guarantee](#).

Citations: 4

[View Online »](#)

Ordering Information

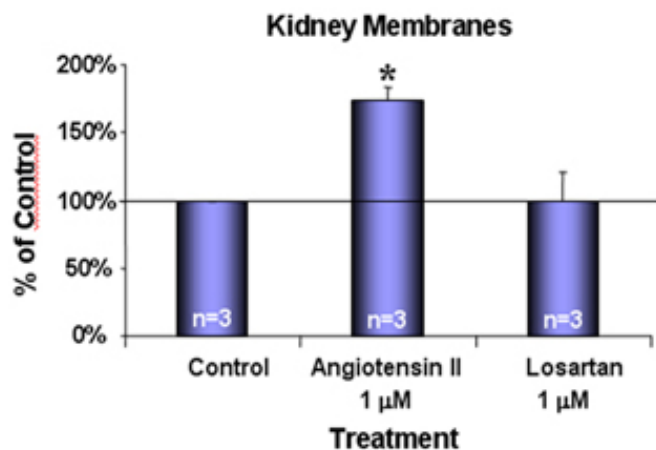
[Order Online »](#)

ADI-905-743-100

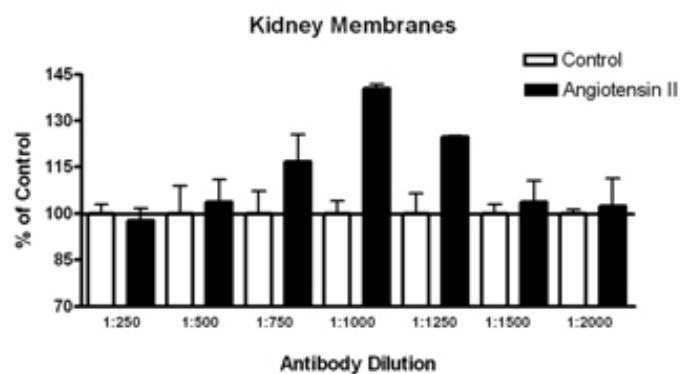
100µg

Manuals, SDS & CofA

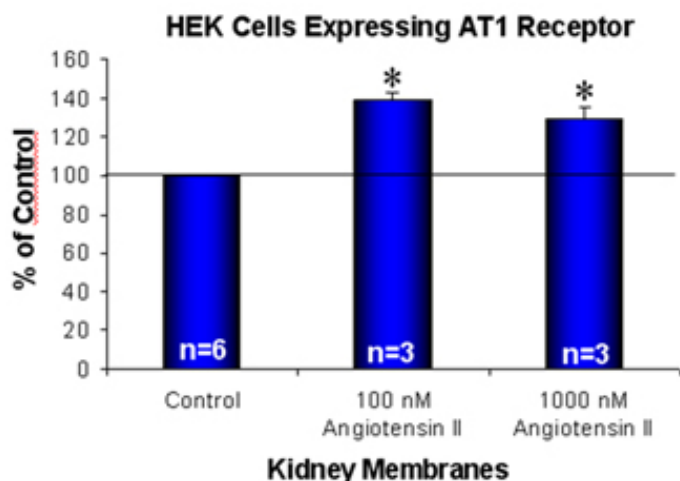
[View Online »](#)



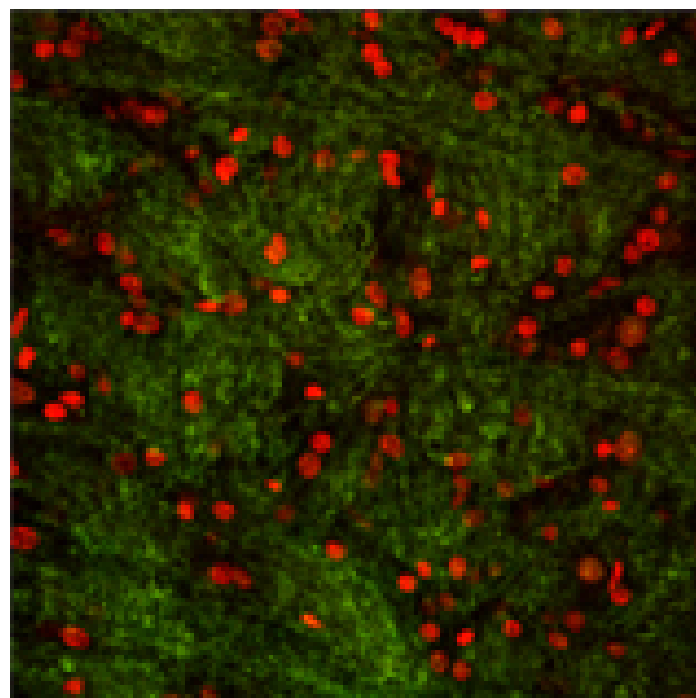
Membrane ELISA: Lewis rat kidney membranes (5 μ g/well) were treated with indicated concentrations of agonist (Angiotensin II) and antagonist (Losartan) and probed with Angiotensin II Receptor (AT1) pAb (1:1000 of a stock solution of 1 μ g/ μ L) by ELISA. Data from vehicle treated cells were taken as 100%. Results are the mean \pm SEM (n=3).



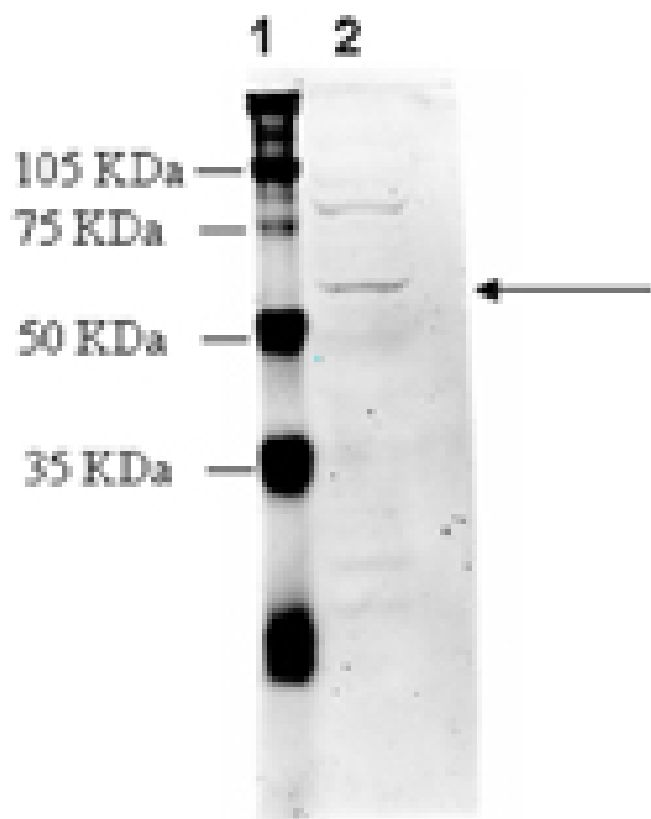
Membrane ELISA: Lewis rat kidney membranes (5 μ g/well) were treated with 1 μ M concentrations of agonist (Angiotensin II) and probed with Angiotensin II Receptor (AT1) pAb (1:250 to 1:2000 of a 1 μ g/ μ L stock solution) by ELISA. Data from vehicle treated cells were taken as 100%. Results are the mean \pm SEM (n=2).



Cellular ELISA: HEK293 cells expressing AT1 Receptor were treated with indicated concentrations of agonist (Angiotensin II) and probed with Angiotensin II Receptor (AT1) pAb (1:1000 of a stock solution of 1 μ g/ μ L) by ELISA. Data from vehicle treated cells were taken as 100%. Results are the mean \pm SEM (n=3).



Immunohistochemistry analysis: Rat brain nucleus tractus solitarius fixed with 100% methanol and stained with propidium iodide (red) and Angiotensin II Receptor (AT1) pAb at 1:1000 (green).



Western blot analysis: MW marker (1) and 20 μ g of kidney membrane extract (2) probed with Angiotensin II Receptor (AT1) pAb at 3 μ g/ml.

Handling & Storage

Handling Keep on ice at all times.

Long Term Storage -20°C

Shipping Blue Ice

Regulatory Status RUO - Research Use Only

Product Details

Alternative Name AGTR1

Application ELISA, IHC, WB

Application Notes Suitable for cell-based and membrane-based ELISA.
Predicted MW of ~41kDa. Higher MW species (~55kDa) and intermediates also observed by Western blot which reflect post-translational modification and dimerization of the receptor.

Crossreactivity Predicted species reactivity based on epitope sequence homology: chimpanzee, bovine, rhesus macaque, sheep, dog, guinea pig, rabbit, horse, wild boar, gerbil.

Formulation Liquid. In PBS containing 50% glycerol and 0.01% sodium azide.

Host Rabbit

Immunogen Synthetic peptide corresponding to the sequence near the N-terminus of rat angiotensin II receptor AT1.

Purity Detail Peptide affinity purified.

Species Reactivity Human, Mouse, Rat

UniProt ID P25095 (AT1A), P29089 (AT1B)

Worry-free Guarantee This antibody is covered by our [Worry-Free Guarantee](#).



ENZO LIFE SCIENCES,
INC.
Phone: 800.942.0430
[info-
usa@enzolifesciences.com](mailto:info-usa@enzolifesciences.com)

European Sales Office
ENZO LIFE SCIENCES
(ELS) AG
Phone: +41 61 926 8989
[info-
eu@enzolifesciences.com](mailto:info-eu@enzolifesciences.com)

Belgium, The Netherlands
& Luxembourg
Phone: +32 3 466 0420
[info-
be@enzolifesciences.com](mailto:info-be@enzolifesciences.com)

France
Phone: +33 472 440 655
[info-
fr@enzolifesciences.com](mailto:info-fr@enzolifesciences.com)

Germany
Phone: +49 7621 5500 526
[info-
de@enzolifesciences.com](mailto:info-de@enzolifesciences.com)

UK & Ireland
Phone (UK customers):
0845 601 1488
Phone: +44 1392 825900
[info-
uk@enzolifesciences.com](mailto:info-uk@enzolifesciences.com)