

# Amyloid $\beta$ A4 (CT, 1-42) monoclonal antibody (8G7)

The  $\beta$ -amyloid peptide ( $\beta$  A4), proteolytically released from the amyloid precursor protein (APP), provides the principal component of senile plaques in Alzheimer's disease. Cleavage of APP by  $\alpha$ -secretase or alternatively by  $\beta$ -secretase leads to generation and extracellular release of soluble APP peptides, S-APP- $\alpha$  and S-APP- $\beta$ , respectively, and the retention of corresponding membrane-anchored C-terminal fragments, C83 and C99. Subsequent processing of C83 by  $\gamma$ -secretase yields P3 peptides. This is the major secretory pathway and is nonamyloidogenic. Alternatively, presenilin/ nicastrin-mediated  $\gamma$ -secretase processing of C99 releases the amyloid  $\beta$  proteins, amyloid- $\beta$  40 ( $A\beta$ 40) and amyloid- $\beta$  42 ( $A\beta$ 42), major components of amyloid plaques, and the cytotoxic C-terminal fragments,  $\gamma$ -CTF(50),  $\gamma$ -CTF(57) and  $\gamma$ -CTF(59).

This antibody is covered by our [Worry-Free Guarantee](#).

Citations: 3

[View Online »](#)

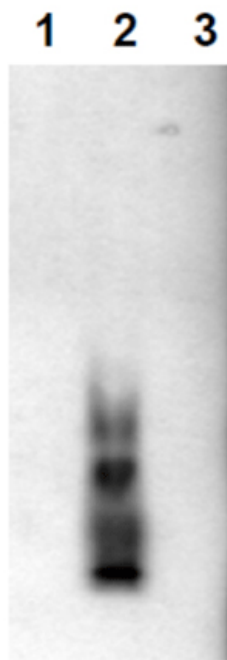
## Ordering Information

[Order Online »](#)

ADI-905-804-100	100 $\mu$ g
-----------------	-------------

## Manuals, SDS & CofA

[View Online »](#)



Western blot analysis of (1)  $\beta$  A4 (1-40), (2)  $\beta$  A4 (1-42), and (3)  $\beta$  A4 (1-43), probed with 2 $\mu$ g/ml of Amyloid  $\beta$  A4 (42) mAb (8G7).

# Handling & Storage

Use/Stability	Stable at -80°C up to 1 year, at 4°C up to 3 months.
Long Term Storage	-20°C
Shipping	Blue Ice

# Regulatory Status

RUO - Research Use Only

# Product Details

Application	ELISA, ICC, WB
Application Notes	Detects a band of ~4kDa by Western blot.
Clone	8G7
Crossreactivity	Does not cross react with $\beta$ A4 (1-40).
Formulation	Lyophilized from 1ml of 2x PBS containing 0.09% sodium azide, PEG, and sucrose.
Host	Mouse
Immunogen	Synthetic peptide corresponding to aa 1-42 of amyloid $\beta$ A4.
Isotype	IgG1
Purity Detail	Thiophilic adsorption and size exclusion chromatography purified.
Recommendation Dilutions/Conditions	ELISA (0.05 $\mu$ g/ml)Immunocytochemistry (0.1-1.0 $\mu$ g/ml)Western Blot (1 $\mu$ g/ml)Suggested dilutions/conditions may not be available for all applications.Optimal conditions must be determined individually for each application.
Reconstitution	Reconstitute with 1ml water (15 minutes at room temperature).
Species Reactivity	Human
Technical Info / Product Notes	<b>Application Note:</b> <a href="#"><i>Analysis of the Effect of Aggregated <math>\beta</math>-Amyloid on Cellular Signaling Pathways Critical for Memory in Alzheimer's disease</i></a>
UniProt ID	P05067

Worry-free Guarantee

This antibody is covered by our [Worry-Free Guarantee](#).



ENZO LIFE SCIENCES,  
INC.  
Phone: 800.942.0430  
[info-  
usa@enzolifesciences.com](mailto:info-usa@enzolifesciences.com)

European Sales Office  
ENZO LIFE SCIENCES  
(ELS) AG  
Phone: +41 61 926 8989  
[info-  
eu@enzolifesciences.com](mailto:info-eu@enzolifesciences.com)

Belgium, The Netherlands  
& Luxembourg  
Phone: +32 3 466 0420  
[info-  
be@enzolifesciences.com](mailto:info-be@enzolifesciences.com)

France  
Phone: +33 472 440 655  
[info-  
fr@enzolifesciences.com](mailto:info-fr@enzolifesciences.com)

Germany  
Phone: +49 7621 5500 526  
[info-  
de@enzolifesciences.com](mailto:info-de@enzolifesciences.com)

UK & Ireland  
Phone (UK customers):  
0845 601 1488  
Phone: +44 1392 825900  
[info-  
uk@enzolifesciences.com](mailto:info-uk@enzolifesciences.com)