

# AMPIVIEW® Rabbit Anti-DNP Linker (Ready-to-Use)

## Ready-to-use linker for ISH applications

The AMPIVIEW® Rabbit Anti-Dinitrophenol (DNP) linker is a ready-to-use signal amplifying reagent optimized to increase the detection sensitivity of Enzo's AMPIVIEW® DNP-labeled RNA probes. Although the AMPIVIEW® Rabbit anti-DNP linker was created to enhance Enzo's AMPIVIEW® RNA probes, it will recognize any DNP associated nucleotide or macromolecule.

This antibody is covered by our [Worry-Free Guarantee](#).

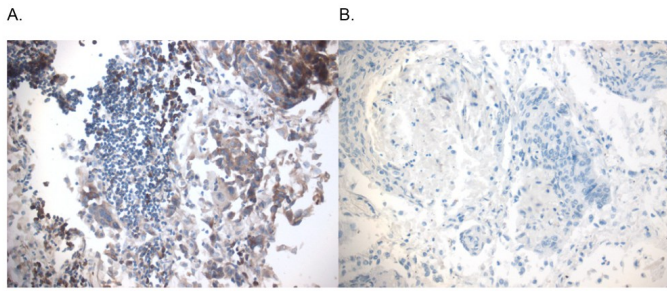
### Ordering Information

[Order Online »](#)

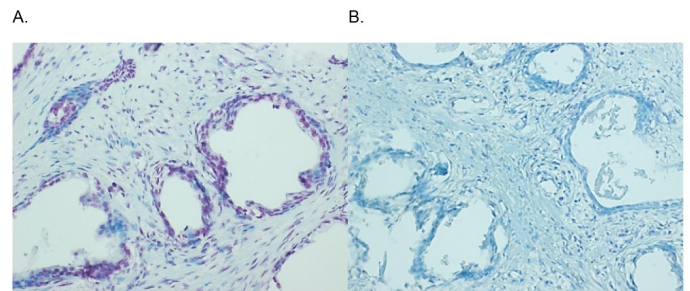
ENZ-ABS928-6000	6ml
-----------------	-----

### Manuals, SDS & CofA

[View Online »](#)



PTEN detected in prostate cancer tissue with A. AMPIVIEW® PTEN (AS) DNP RNA Probes (red) and B. AMPIVIEW® NSP DNP RNA Probes (no signal). Tissue samples were pre-treated with antigen retrieval reagent, pH 9 (ENZ-ACC113), Proteinase K (ENZ-33801), and AMPIVIEW® PTEN (AS) DNP RNA probes (ENZ-GEN131) were amplified with AMPIVIEW® anti-DNP Linker (RTU) (ENZ-ACC928) and detected with POLYVIEW® PLUS (anti-rabbit) AP (ENZ-ACC110), combined with HIGHDEF® Red AP chromogen kit (ENZ-ACC158) and hematoxylin (ENZ-ACC106).



PD-L1 (brown) detected in lung carcinoma tissue with A. AMPIVIEW® PD-L1 (AS) DNP RNA Probes and B. AMPIVIEW® NSP DNP RNA Probes. Tissue samples were pre-treated with antigen retrieval reagent, pH 9 (ENZ-ACC113), Proteinase K (ENZ-33801), and AMPIVIEW® PD-L1 (AS) DNP RNA probes (ENZ-GEN291) were amplified with AMPIVIEW® anti-DNP Linker (RTU) (ENZ-ACC928) and detected with POLYVIEW® PLUS (anti-rabbit) HRP (ENZ-ACC103), combined with HIGHDEF® DAB Chromogen/Substrate (ENZ-ACC105) and hematoxylin (ENZ-ACC106).

## Handling & Storage

Use/Stability	As indicated on product label or CoA when stored as recommended.
Handling	Do not freeze.
Long Term Storage	+4°C
Shipping	Blue Ice

## Regulatory Status

RUO - Research Use Only

## Product Details

Application	ISH (in situ hybridization)
Formulation	Liquid. Ready-to-use in PBS containing stabilizers and preservatives.
Host	Rabbit
Isotype	IgG
Source	Purified IgG fraction of rabbit serum.
Species Reactivity	Species independent
Technical Info / Product Notes	The AMPIVIEW <sup>®</sup> Rabbit Anti-DNP linker can be used in conjunction with POLYVIEW <sup>®</sup> PLUS reagents and kits combined with HIGHDEF <sup>®</sup> chromogens and counterstain to visualize DNP-labelled targets.
Worry-free Guarantee	This antibody is covered by our <a href="#">Worry-Free Guarantee</a> .

Last modified: March 5, 2025



ENZO LIFE SCIENCES,  
INC.  
Phone: 800.942.0430  
[info-usa@enzolifesciences.com](mailto:info-usa@enzolifesciences.com)

European Sales Office  
ENZO LIFE SCIENCES  
(ELS) AG  
Phone: +41 61 926 8989  
[info-eu@enzolifesciences.com](mailto:info-eu@enzolifesciences.com)

Belgium, The Netherlands  
& Luxembourg  
Phone: +32 3 466 0420  
[info-fr@enzolifesciences.com](mailto:info-fr@enzolifesciences.com)

France  
Phone: +33 472 440 655  
[info-fr@enzolifesciences.com](mailto:info-fr@enzolifesciences.com)

Germany  
Phone: +49 7621 5500 526  
[info-de@enzolifesciences.com](mailto:info-de@enzolifesciences.com)

UK & Ireland  
Phone (UK customers):  
0845 601 1488  
Phone: +44 1392 825900  
[info-uk@enzolifesciences.com](mailto:info-uk@enzolifesciences.com)